

BERNAT'S HANDICRAFTER



*Handknit
Fashions*

DIRECTIONS
ON PAGE 42



CONTENTS

VOLUME IX

NUMBER 1

| | <i>Page</i> |
|--|-------------|
| Style No. 1119 — One-Piece Dress of Kool Knit | 2 |
| Style No. 1106 — One-Piece Dress of Bouclé de Laine | 5 |
| Style No. 1105 — One-Piece Dress of Snowflake | 6 |
| Style No. 1104 — Two-Piece Dress of Kool Knit | 9 |
| Style No. 1103 — One-Piece Dress of Yorkshire and Cape of Brittany | 10 |
| Style No. 1063 — One-Piece Dress of Veltine | 13 |
| Style No. 1093 — One-Piece Dress of Dainty Blossom | 14 |
| Style No. 1116 — One-Piece Dress of Bouclé de Laine | 17 |
| Style No. 1099 — Tailored Suit of Leemont | 18 |
| Style No. 1107 — Two-Piece Dress of Bouclé de Laine | 21 |
| Style No. 1110 — One-Piece Dress of Florelle | 22 |
| Style No. 1115 — One-Piece Dress of Chantilly | 25 |
| Style No. 1111 — Shirred Chantilly One-Piece Dress | 26 |
| Style No. 1124 — Two-Piece Dress of Florelle | 29 |
| Style No. 1123 — Two-Piece Dress of Glendown with Cross-Stitch Embroidery Blouse | 30 |
| Style No. 1121 — Two-Piece Dress of Celtaïne | 33 |
| Style No. 1112 — Two-Piece Dress of Snowflake | 34 |
| Style No. 1108 — Two-Piece Suit of Fantasie and Manchu with Striped Blouse | 37 |
| Style No. 1082 — One-Piece Dress in Veltine | 38 |
| Style No. 1114 — Burma Coat | 41 |
| Style No. 1109 — One-Piece Dress of Chantilly | 42 |
| Style No. 184 — Twin Sweater of Glendown Heather | 46 |

One-Piece Dress of Kool Knit

STYLE NO. 1119

LIST OF MATERIALS WITH INSTRUCTIONS FOR KNITTING

SIZE 16

BERNAT'S Kool Knit, No. 5344, peach blossom, 19 balls

Knitting Needles: One pair No. 4 needles (Standard)

One 20-inch talon fastener

Two buttons

GAUGE: $5\frac{1}{2}$ stitches = 1 inch, 9 rows = 1 inch

PATTERN: Sts. multiple of 14 plus 5 (used throughout dress).

Row 1: Slip 1, K 1, * K 1, y.o., K 2, P 3, P 3 tog, P 3, K 2, y.o. Repeat from star across row, ending K 3.

Row 2: Slip 1, K 1, * P 4, K 7, P 3. Repeat from star across row, ending P 1, K 2.

Row 3: Slip 1, K 1, * K 2, y.o., K 2, P 2, P 3 tog., P 2, K 2, y.o., K 1. Repeat from star across row, ending K 3.

Row 4: Slip 1, K 1, * P 5, K 5, P 4. Repeat from star across row, ending P 1, K 2.

Row 5: Slip 1, K 1, * K 3, y.o., K 2, P 1, P 3 tog., P 1, K 2, y.o., K 2. Repeat from star across row, ending K 3.

Row 6: Slip 1, K 1, * P 6, K 3, P 5. Repeat from star across row, ending P 1, K 2.

Row 7: Slip 1, K 1, * K 4, y.o., K 2, P 3 tog., K 2, y.o., K 3. Repeat from star across row, ending K 3.

Row 8: Slip 1, K 1, * P 7, K 1, P 6. Repeat from star across row, ending P 1, K 2.

Row 9: Slip 1, K 1, P 2 tog., * P 3, K 2, y.o., K 1, y.o., K 2, P 3 **, P 3 tog. Repeat from star at last repetition, only work as far as **, P 2 tog, K 2.

Row 10: Slip 1, K 1, * K 4, P 7, K 3. Repeat from star across row, ending K 3.

Row 11: Slip 1, K 1, P 2 tog., * P 2, K 2, y.o., K 3, y.o., K 2, P 2 **, P 3 tog. Repeat from star at last repetition, only work to **, P 2 tog., K 2.

Row 12: Slip 1, K 1, * K 3, P 9, K 2. Repeat from star across row, ending K 3.

Row 13: Slip 1, K 1, P 2 tog., * P 1, K 2, y.o., K 5, y.o., K 2, P 1 **, P 3 tog. Repeat from star at last repetition, only work to **, P 2 tog., K 2.

Row 14: Slip 1, K 1, * K 2, P 11, K 1. Repeat from star across row, ending K 3.

Row 15: Slip 1, K 1, P 2 tog., * K 2, y.o., K 7, y.o., K 2 **, P 3 tog. Repeat from star, ending last repetition of **, P 2 tog., K 2.

Row 16: Slip 1, K 1, * K 1, P 13. Repeat from star, ending K 3.

Repeat these 16 rows throughout.

SKIRT

BACK: Cast on 145 sts. Work even for 32 rows. Then dec. 1 st. each side every $1\frac{1}{2}$ inches 10 times, every inch twice (skirt measures 19 inches), then every $\frac{1}{2}$ inch 22 times. Work 2 rows and cast off.

FRONT: Work other half the same to point of 18th dec. When skirt measures 22 inches, cast off center 3 sts. Work each top half of skirt separately, even at center, and dec. at outside edge. Assemble side seams neatly. Work sufficient s.c. around bottom of skirt to even hemline.

BLOUSE

BACK: Cast on 75 sts. Inc. 1 st. each side every inch 7 times. Work even until piece measures $8\frac{1}{2}$ inches, and shape armhole by casting off 5 sts. at beg. of next 2 rows and 1 st. at beg. of next 8 rows. Work even until armhole measures 7 inches measured straight, and slant shoulder by casting off 5 sts. at beg. of next 8 rows. Cast off balance.

FRONT: Cast on 44 sts. Inc. 1 st. at underarm edge every $\frac{1}{2}$ inch 11 times. Work even until piece measures same number of rows to underarm, and shape armhole by casting off 5 sts. once, 2 sts. 3 times, and 1 st. 6 times. Work even until armhole measures 4 inches, and shape neck by casting off 5 sts. once and 1 st. 13 times. Slant shoulder when armhole measures 7 inches by casting off 5 sts. at a time 4 times. Make other front to correspond.

SLEEVES: Cast on 61 sts. Inc. 1 st. each side every $\frac{1}{2}$ inch 7 times. When piece measures 4 inches, shape cap by casting off 5 sts. at beg. of next 2 rows, then 1 st. until 21 sts. are left. Cast these off at once. In assembling, place fullness at top of sleeves. Crochet a d.c. band 2 inches wide for cuff, and fasten with snaps. S.c. up and down front, around neck. Close with 20-inch talon fastener.



STYLE NO. 1119— All cotton and all Kool Knit is this one-piece outfit. The pattern works up quickly and is lacy and flattering. You zip up the front!



STYLE NO. 1106— The young lady reading the tea cup wears a handknit of BERNAT'S Bouclé de Laine. This yarn drapes superbly, making it soft and flattering.

One-Piece Dress of Bouclé de Laine

STYLE NO. 1106

LIST OF MATERIALS WITH INSTRUCTIONS FOR KNITTING

SIZE 16

BERNAT'S *Bouclé de Laine*, No. 534, raspberry fuchsia, 16 balls

Knitting Needles: One No. 3 circular needle (Standard)

GAUGE: 7 stitches = 1 inch, 12 rows = 1 inch

STITCH: Stockinette stitch

SKIRT

Cast on 380 sts. Work even 1 inch. (Mark 1 st. at 4 even intervals around skirt. Decs. are made each side of marked st. for entire skirt.) Dec. every inch 5 times; every 3 inches 6 times; every $\frac{1}{2}$ inch 14 times to 180 sts. Bind off. Work 2 rows s.c. around bottom of skirt. Finish top with beading, ch. 3, 1 d.c. in every 3rd st.

BLOUSE

BACK: Cast on 100 sts. (P 1 row, K 1 row). Work even for 6 rows. Inc. 1 st. in every 3rd st. for 1 row to 133 sts. Work even for 4 rows. K 34, then inc. 1 st. in every st. on next 65 sts. (center back fullness), K last 34 sts. (198 sts.). Next K row, inc. 1 st. every 3rd st. on 34 sts. K 130, inc. 1 st. every 3rd st. on last 34 sts. to 220 sts. on needle. Work even for $6\frac{1}{2}$ inches from bottom edge. Cast on 3 sts. at beg. of next 4 rows, then cast on 5 sts. at beg. of next 8 rows (272 sts.). Work even for 7 inches from last 5 sts. cast on. On next P row begin to shape shoulders as follows: P 264, turn, K 256, turn; P 248, turn, K 240, turn; P 232, turn, K 224, turn; P 216, turn, K 208, turn; P 198, turn, K 188, turn; P 178, turn, K 168, turn; P 158, turn, K 148, turn; P 138, turn, K 128, turn. P to end of row (over saved sts.). K 1 row. Cast off by K 2 tog. 36 times, K 3 tog. 43 times, K 2 tog. 35 times, K last st. Next row, cast off.

FRONT: Work same as back to shoulder shaping, then: P 264, turn, K 256, turn; P 248, turn, K 240, turn; P 232, turn, K 64. Cast off 96 sts. by K 3 tog. 32 times as you cast off front neck. K 88, turn, P 88, turn, working on these 88 sts. separately. Beg. K row, K 3 tog., K 1, bind off 1 st. (3 sts. off). K 75, turn, P back, turn, K 3 tog., K 1, bind off 1, K 62, turn, P 62. Continue to decrease in this manner at beg. of every K row, and saving 10 sts. at end of every K row until 74 sts. remain. Cast off these 74 sts. by K 2 tog. Work other side to correspond.

FINISHING: *Trimming bands for blouse:* Cast on 14 sts. *1st row:* P 1, yarn back, slip 1 st. as if to P, yarn forward, repeat to end of row, ending slip 1 st. *2nd row:* K 1 st., yarn forward, slip 1 st. as if to P, yarn back, repeat to end of row, ending slip 1 st. Repeat these 2 rows for entire bands. Work 1 band 19 inches long for top of back, shoulders and neck. Work another band 10 inches long for front of neck. Work 2 bands 14 inches long for sleeves. Work 1 band on 18 sts. for belt, desired length. Sew underarm sleeve seam. Work beading on bottom of blouse to correspond to top of skirt (have same number of eyelets). Sew 19-inch band across top of blouse back; 10-inch band across front of neck, and back band across front shoulder line. Sew 14-inch bands to sleeves. Face belt with ribbon and fasten as desired. K side of bands is right side.

One-Piece Dress of Snowflake

STYLE NO. 1105

LIST OF MATERIALS WITH INSTRUCTIONS FOR KNITTING

SIZE 16

BERNAT'S Snowflake, No. 747, navy and white, 14 balls
Knitting Needles: One No. 3 circular steel needle (Standard); one pair No. 3 straight needles (Standard)
One steel crochet hook No. 5 (Standard)
Three ¾-inch button moulds
One yard 1-inch organdie edging
GAUGE: 7½ stitches=1 inch, 10½ rows=1 inch
STITCH: Stockinette stitch.

MARKER: Tie a short piece of contrasting yarn around needle and slip, like a slipped st., on every row.

SKIRT

Cast on 360 sts. on circular needle for bottom edge. Work even 2 inches for a hem. Then P 1 row on right side for hemline. K 3 inches even. * K 3-4, K 2 tog. for 1 round. Dec. 10 sts. every 3 inches 6 times more (290 sts. — 21 inches from hemline). Now dec. 10 sts. every inch 8 times (210 sts. — 29 inches from hemline.) Work 1 inch even and bind off. Work 1 row of s.c. around top of skirt and turn up bottom hem.

BLOUSE

Inc. by knitting lower loop of next st., thus not using a st. to inc.

BACK: Cast on 98 sts. for bottom edge. Place a marker 25 sts. in from each end of needle for darts. Inc. 1 st. on both sides of both markers and 1 st. on each side seam (6 sts. increased) every 1¼ inches 5 times (128 sts. — end of darts). Work even until back measures 8 inches.

Armholes: Bind off 6 sts. at beg. of next 2 rows, 2 sts. at beg. of next 6 rows. Then dec. 1 st. at each side on the next 3 K rows (98 sts.). Work even until back measures 6 inches from beg. of armholes (measured straight from first cast off). Now place a marker 35 sts. in from each end of needle for darts and, on the next K row, dec. 1 st. on both sides of both markers. Work even 1 inch and, on next K row, dec. 1 st. on both sides of both markers (90 sts. — 7 inches from beg. of armhole).

Shoulders: Bind off 5 sts. at beg. of next 10 rows, 3 sts. at beg. of next 2 rows and remaining 34 sts. on following row.

LEFT FRONT: Each front is started in two separate pieces to form a short diagonal slashlike seam extending upward from side seam toward center front.

1st piece: Cast on 64 sts. for waistline edge. Work even 2 inches. Now begin to work short rows on wrong side as follows: On next P row, leave the last 4 sts. of row unworked; turn and, on right side, slip first st. as to K, then K across. Continue in this manner, leaving 4 additional sts. unworked at the end of every P row, until only 20 sts. on

the needle are being worked. On the next P row, P 20, then bind off all the rest of the sts. (44) evenly for seam edge. Piece should measure approximately 4 inches on center front edge, 2 inches on side seam and 6 inches on diagonal seam edge. Place the 20 remaining sts. on a holder.

2nd piece: Cast on 44 sts. for seam edge and P the 1st row. On the next row K 13, then inc. before every other st. until 14 sts. have been added (58 sts. in all), and leave the last 3 sts. of row unworked. Turn, and on wrong side slip first st. as to P, then P across. Continue to work short rows on right side, leaving 5 additional sts. unworked at the end of every K row, until only 5 sts. on the needle are being worked.

To Join Pieces: On the next K row, work across all the sts. of second piece, then across the 20 sts. of first piece left on holder. There should now be 78 sts. on the needle. Work even until front measures 8 inches from beg. on center front edge.

Armhole: Bind off 5 sts. at beg. of next K row and 2 sts. at beg. of next 6 K rows, at the same time decreasing 1 st. at end of every K row for neck edge (54 sts.). Now keep armhole edge even for remainder of front, and dec. for neck as follows: Skip dec. on neck edge on next K row, then dec. 1 st. on neck edge on next 2 K rows. Continue in this manner, marking every K row on which dec. is skipped, until there are 10 marked skipped rows. At the same time place a marker for a dart 18 sts. in from armhole edge and dec. 1 st. on both sides of marker at 5 inches, 6 inches and 7 inches from beg. of armhole. When there are 10 marked rows on neck edge and dart has been completed, there should be 28 sts. on the needle and front should measure 7 inches from beg. of armhole.

Shoulder: Bind off 5 sts. at beg. of next 5 K rows, 3 sts. on next K row.

RIGHT FRONT: Work to correspond to left front, working short rows on right side of work (K rows) on first piece and on wrong side of work (P rows) on second piece. Make 3 buttonholes in right front, spacing them 2½ inches apart, as follows: At the beg. of a K row, K 4, bind off 4; on following row cast on sts. above those bound off below. Space according to rows on opposite front.

LEFT FRONT FACING: Cast on 12 sts. and work even 8 inches. Now shape facing to match neck edge as follows: Dec. 1 st. at beg. and inc. 1 st. at end on next 7 K rows. Now skip both dec. and inc. on next K row, then dec. 1 st. at beg. and inc. 1 st. at end on next 2 K rows. Continue in this manner, marking every K row on which decs. and incs. are skipped, until there are 10 marked rows. Work even 1 inch and bind off.

(Continued on page 22)



STYLE NO. 1105— Any woman would have a bon voyage in this classic one-piece dress of BERNAT'S Snowflake. A nice dress for street or business, too.



STYLE NO. 1101— A cotton handknit is always nice for warm days. Especially when it's as smart as this and is knit of BERNAT'S Kool Knit.

Two-Piece Dress of Kool Knit

STYLE NO. 1104

LIST OF MATERIALS WITH INSTRUCTIONS FOR KNITTING

SIZE 16

BERNAT'S Kool Knit, No. 5335, white, 22 balls

Knitting Needles: one No. 3 circular needle (Standard);

one pair No. 3 straight needle (Standard); one steel

crochet hook No. 5 (Standard)

GAUGE: 7 stitches=1 inch, 10 rows=1 inch

SKIRT

On circular needle cast on 330 sts. K garter-st. border for $1\frac{1}{2}$ inches. Change to stockinette st. and K for 12 inches, including border. Then dec. by knitting 32nd and 33rd sts. tog. for 1 round (10 sts. decreased). K 2 inches even.

Then dec. by knitting 31st and 32nd sts. tog. for 1 round, K 2 inches even; 30th and 31st sts. tog. for 1 round, K 2 inches even; 29th and 30th sts. tog. for 1 round, K 2 inches even; 28th and 29th sts. tog. for 1 round, K 2 inches even; 27th and 28th sts. tog. for 1 round, K 2 inches even; 26th and 27th sts. tog. for 1 round, K 1 inch even; 25th and 26th sts. tog. for 1 round, K 1 inch even; 24th and 25th sts. tog. for 1 round, K 1 inch even; 23rd and 24th sts. tog. for 1 round, K 1 inch even; 22nd and 23rd sts. tog. for 1 round, K 1 inch even; 21st and 22nd sts. tog. for 1 round, K 1 inch even; 20th and 21st sts. tog. for 1 round, K 1 inch even; 19th and 20th sts. tog. for 1 round.

K 1 row and cast off. When finished knitting, skirt should measure 31 inches in length and have 190 sts. on needle. Bind off loosely. S.c. 2 rows around top and make inside casing for elastic.

BLOUSE

BACK: Cast on 120 sts. Work in garter st. Dec. 1 st. each side every inch until back measures 6 inches (108 sts.). Then dec. 10 sts. evenly spaced across 1 row (98 sts.). Change to stockinette st. Work $\frac{1}{2}$ inch and inc. 12 sts. evenly across 1 row. Then inc. 1 st. each side on the K row every inch 5 times (120 sts.). K even until back measures $7\frac{1}{2}$ inches above garter-st. band. Bind off 8 sts. each side, then dec. 1 st. each side every K row 7 times. K even until armhole measures 7 inches (measure straight up from bound-off sts.). Bind off 7 sts. at beg. of the next 8 rows (28 sts. for each shoulder). Bind off remaining sts. for neck.

FRONT: Cast on 120 sts. Work in garter st. Dec. 1 st. each side every inch until piece measures 6 inches. Then dec. evenly across 1 row to 98 sts. Change to stockinette st. and K 47, bind off 4, K 47. P back. Tie in second ball of yarn and work both fronts at the same time. Work $\frac{1}{2}$ inch. Then inc. each front to 56 sts. evenly spaced in 1

row. Then inc. 1 st. at armhole edges on the K row every inch 5 times. K even until front measures $8\frac{1}{2}$ inches above garter-st. band. Bind off 10 sts. at armhole edge, then dec. 1 st. at armhole edge every K row 8 times. K even until armhole measures $4\frac{1}{2}$ inches (measure straight up from bound-off sts.). Bind off 7 sts. at neck edge, then bind off 2 sts. at neck edge at the beg. of every row 4 times (28 sts.). K even until armhole measures 7 inches (measure straight up from bound-off sts.). Bind off 7 sts. each side at armhole edge 4 times. Sew shoulder seams.

SLEEVES: With right side of work toward you, pick up the 10 bound-off sts. on front. Place marker. Pick up sts. around armhole to the 8 sts. bound off at back, place guide string, pick up 10 sts. in last 8 (110 in all). Break yarn. With wrong side of work toward you, slip sts. (from left-hand needle to right-hand needle) to center 20 sts. (10 sts. each side of shoulder seam). Tie in yarn. P these center 20 sts. Working back and forth across center sts., always slip first st., always work 2 sts. more at the end of every row until there are 6 or 7 sts. before markers, then work 3 sts. more every row to markers. Then work across last 10 sts. each side at once. K 1 inch. Then dec. 1 st. each side on the K row every inch twice. K 1 inch and dec. evenly across 1 row to 64 sts. Work 1 inch garter-st. band. Bind off loosely. Make other sleeve the same.

LAPELS: With right side of work toward you, working on left side of front, pick up approximately 78 sts. from neck to bound-off sts. Work lapels in garter st. K 1 inch. Then bind off 1 st. at beg. of every row at neck edge, and 2 sts. at the beg. of every row at lower edge until all are bound off. Make other lapel the same.

COLLAR: Work 1 row s.c. around neck. Then with right side of work toward you, pick up all sts. around neck (approximately 100), working them through back of crochet st. Work 1 inch garter st. Bind off loosely. Work 1 row s.c. around collar. Work 2 rows of s.c. down each side of front, then s.c. sides tog. to within 5 inches of neck; leave this open.

BELT: Cast on 190 sts. Work in garter st. for $1\frac{1}{2}$ inches and bind off loosely. Work 2 rows of s.c. around belt. Sew belt on elastic belting. Finish with hook and eyes to fasten. Sew fasteners down front and on belt.

One-Piece Dress of Yorkshire and Cape of Brittany

STYLE NO. 1103

LIST OF MATERIALS WITH INSTRUCTIONS FOR KNITTING

SIZE 16

BERNAT's Yorkshire, No. 1442, white, 18 balls

Knitting Needles: One No. 2 circular steel needle (Standard); one pair No. 2 straight needles (Standard)

GAUGE: 7 stitches = 1 inch, 10 rows = 1 inch

Cast on 380 sts. Join.

Round 1: * K 2, P 2 *, repeat between stars for 6 rounds.

Round 7: * P 2, K 2 *, repeat between stars for 6 rounds.

Round 13: * K 2, P 2 *, repeat between stars for 6 rounds.

Change to stockinette st. When piece measures 1 inches, dec. by knitting the 37th and 38th sts. tog. for 1 round (10 dec., 370 sts.). When piece measures 6 inches, dec. by knitting the 36th and 37th sts. tog. for 1 round (10 dec., 360 sts.). When piece measures 8 inches, dec. by knitting 35th and 36th sts. tog. for 1 round (10 dec., 350 sts.).

Next round, start pattern panels (place marker on needle), K 20 (these 20 sts. are front panel), * P 2, K 2, P 2, K 21 *, repeat between stars around. Repeat this round 5 more times. K 22, * P 2, K 25 *, repeat between stars around, ending P 2. Repeat this round 5 more times.

Alternate these 6 rounds. Dec. when piece measures 10 inches by knitting 2 sts. tog. in each 21-st. panel (all except front panel — 12 dec.). Repeat these 12 decs. every 15 rows until skirt measures 20 inches, and cast off 2 center sts. in front panel. From this point, work back and forth on circular needle, maintaining pattern panels by knitting where you purled and purling where you knitted on reverse row, and decreasing 1 st. at the beg. of next 4 rows. Then keep edges even. Continue the 12 decs. until you have 188 sts. on needle. Work even in pattern until skirt measures 31 inches. Increase as follows for blouse: Do no increasing in either of the front-edge 7-st. panels, but inc. 5 sts., evenly spaced, in next stockinette panel; 5 in next; 4 in next; 3 in each of next 6; 4 in next; 5 in next 2. Work return row without increasing, but on next row inc. 3 sts. in each of first and last panels (ones where the 7 sts. were). Work even, maintaining pattern (240 sts.) for 6 or 7 patterns, ending with the P 2, K 2, P 2 group and, on next 6 rows of pattern, move each pattern out 2 sts. each side. (You will have a P 2, K 2, P 2, K 2, P 2 group.) Continue this for 2 more pattern groups (12 more rows), then move patterns out again each side. (You will have P 2, K 2, P 2, K 2, P 2, K 2, P 2, K 2, P 2 group.) When blouse measures 8½ inches, slip the 1st and last 63 sts. on holder for fronts, and work back and forth on remaining 114 sts. for back.

Cast off 5 sts. at beg. of next 2 rows and 1 st. at beg. of next 12 rows (92 sts.). Work even until armhole measures 3½ inches, and K 2 sts. tog. in each of 6 places where you are carrying 3 sts. in stockinette in pattern. Work in pattern all across back (86 sts., K 2, P 2 rib for 6 rows, then P 2, K 2, rib for 6 rows alternate). When armhole measures 7 inches measured straight, slant shoulders by casting off 7 sts. at beg. of next 4 rows, then 6 sts. at beg. of next 4 rows. Cast off remaining 34 sts. at once.

Pick up 63 sts. for 1 front. Cast off for armhole at beg. of every armhole row 7 sts., then 2 sts. twice and 1 st. 4 times. Next row: K 3 sts. tog. each of 2 plain stockinette-st. sections. Work back even, and next row again K 3 sts. tog. in each of above sections directly above last dec. Work back even, and next row K 2 sts. tog. directly above last dec. In the meantime, when armhole measures 2½ inches, dec. 1 st. at neck edge every other row 10 times. When armhole measures as back, slant shoulder by casting off 7 sts. 4 times. Make other front the same.

SLEEVES: Cast on 68 sts. K 2, P 2, ribbing for 6 rows. Then alternate with P 2, K 2, ribbing for 6 rows as at bottom of skirt.

On 19th row, change to stockinette and add 20 sts. evenly spaced. Work even until sleeve measures 5 inches, and cast off: 5 sts. at beg. of next 2 rows, 1 st. at beg. and end of every 4th row 8 times, 1 st. at beg. and end of every 2nd row 4 times, 2 sts. at beg. of next 4 rows, 4 sts. at beg. of next 2 rows. K 2 sts. tog. across row. Bind off balance. Make 2nd sleeve the same.

Work 1 inch of s.c. by working up front, around neck and down other front, turning and crocheting back (repeat). Work 7 buttonholes in the crochet after 5 rows — space first 3 inches below curve of neckline and last at base of opening. Make casing for elastic. Fasten elastic with hooks.

CAPE

LIST OF MATERIALS WITH INSTRUCTIONS FOR KNITTING

SIZE 16

BERNAT's Brittany, No. 5861, Colonial blue, 18 balls

Knitting Needles: One No. 5 circular needle (Standard)
Eleven large button molds

GAUGE: 5 stitches = 1 inch, 9 rows = 1 inch

PATTERN: Stockinette Stitch.

Increases are made by knitting front and back of same st.

(Continued on page 43)



STYLE NO. 1103— A charming one-piece dress adds a cape for extra style measure! The dress is knit of BERNAT'S Yorkshire yarn, while the cape is of BERNAT'S Brittany.



STYLE NO. 1068— A one-piece dress with a vestee front. It's all worked out with BERNAT'S lovely Veltine yarn and is the perfect dressy sports costume.

One-Piece Dress of Veltine

STYLE NO. 1068

LIST OF MATERIALS WITH INSTRUCTIONS FOR KNITTING

SIZE 16

BERNAT'S *Veltine*, No. 3381, white, 14 skeins

BERNAT'S *Veltine*, No. 3342, peach blossom, 1 skein

Knitting Needles: One No. 2 circular steel needle (Standard); one pair No. 2 straight needles

GAUGE: 7 stitches = 1 inch, 12 rows = 1 inch

SKIRT

Using circular needle No. 2, cast on 378 sts. Join. K 12 sts., P 2 sts. for 1 round, then K 1 round plain. Repeat these 2 rounds, making 27 panels of 12 sts. with 2 P sts. between. When skirt measures 12 inches, dec. 1 st. in each panel (any 2 sts. except the ones next to the P ribs).

K 6 inches, dec. 1 st. in each panel; K 6 inches, dec. 1 st. in each panel; K 1 inch, dec. 1 st. in each panel; K 1 inch, dec. 1 st. in each panel; K 1 inch, dec. 1 st. in each panel. This makes 6 decreases, leaving 6 sts. in each panel, and skirt measures 27 inches (216 sts.). Work 1 inch. (Allow 2 inches for stretch in blocking.) Bind off. Crochet 2 rows s.c. around top. On bottom of skirt, work 1 row s.c., then 1 row d.c.

BLOUSE

Using No. 2 straight needles, cast on 102 sts. K 6, P 2 across row, ending K 6. P back. Repeat for 12 rows. Then inc. 2 sts. in first and last panel, and 1 st. in each of other panels, making 117 sts. on needle. The balance of the blouse is worked in panels of K 7, p. 2, while all alternate rows are purled. Work back $7\frac{1}{2}$ inches.

UNDERARM: Bind off 7 sts. each end of needle, then dec. 1 st. each end 7 times (14 sts. taken off each side, 89 sts. on needle). Work armhole for $6\frac{1}{2}$ inches measured straight from underarm cast off. To shape shoulder, bind off 7 sts. at the beg. of next 8 rows; 28 sts. bound off for each shoulder, then bind off remaining 33 sts. for back of neck. Without breaking yarn, pick up 28 sts. just bound off on left shoulder, and work in pattern for 12 rows. Then inc. 1 st. at neck edge each P row 18 times. Then work front edge even. *In the meantime*, when front armhole measures to point opposite last armhole decs. on back, make incs. on each K row to match back decs., casting on 8 sts. at last inc. for underarm. Work front 1 inch longer than back. When 1 inch from bottom, dec. 1 st. in each panel. Bind off. Work other front to match.

SLEEVES: With right side of work toward you, start 16 sts. to right of shoulder seam and pick up 32 sts. P back and pick up 1 more. On next K row, start pattern of K 7,

P 2, and pick up 1 more st. at end of row. Continue in this way, picking up 1 st. at end of each row and keeping pattern until all sts. have been picked up. Pick up last underarm sts. at one time. There should be about 90 sts. on needle. Work 1 inch even, then bind off 20 sts. at centre of sleeve and work each side separately. For left side of sleeve, work 12 rows even, then dec. 1 st. each K row on centre edge 9 times. Work to centre edge of sleeve, and pick up st. along centre edge where sleeve was just shaped, going into both the knot and the loop between, having 1 st. for each row of knitting. There should be about 64 sts. K 1 st., P 1 st. for 12 rows. Bind off loosely, knitting the K sts. and purling the P ones. Work other half of sleeve the same. Then sew ends of ribbed edge to centre of sleeve where 20 sts. were bound off. Make other sleeve to match.

To make ribbed edge around neck, start at right front bottom of blouse and pick up all sts. around neck to the bottom of left front. For 2 inches each side of where front forms V (where increases on neck edge stop), pick up sts. in both knot and loop as on sleeve, to shape around V. There should be about 200 sts. on needle. Work ribbing of K 1, P 1, for 12 rows, and bind off loosely as for sleeve.

VEST: Cast on 72 sts. Work in ribbing of K 1, P 1, for whole vest. Work 4 rows even, then dec. 1 st. every other row, same end, 12 times. Then inc. in same manner, and work 4 rows even. Bind off loosely.

FINISHING: Fit vest to front of blouse so that points come about 3 inches from shoulder seam. Sew to edges of blouse under ribbed edge. Work 2 rows s.c. around bottom of blouse. Crochet to skirt. Make inside casing at waist for elastic.

BELT: Peach Blossom. Cast on 210 sts. Work in ribbing of K 1, P 1, shaping one end by inc. 1 st. every other row 6 times, then dec. 6 times in same manner. Bind off very loosely. On curved end (starting and ending $1\frac{1}{2}$ inches from start of shaping), pick up 24 sts. Inc. 1 st. in each st., making 48 sts. Work ribbing of K 1, P 1, for 18 rows. Bind off loosely. Sew ends to edge of belt in fan shape. Face with ribbon and fasten with snaps.

One-Piece Dress of Dainty Blossom

STYLE NO. 1093

LIST OF MATERIALS WITH INSTRUCTIONS FOR KNITTING

SIZE 16

BERNAT's Dainty Blossom, No. 3043, cream, 9 skeins

Knitting Needles: One No. 3 circular needle (Standard):

one pair No. 5 straight needles (Standard)

One crochet hook No. 5 (Standard)

One belt

Six small buttons

GAUGE: 6 stitches = 1 inch, 8 rows = 1 inch

SKIRT

MARKER: Tie a short piece of contrasting yarn around needle and slip, like a slipped st., on every row.

On circular needle cast on 320 sts. for bottom edge. Now place 10 markers as follows: * K 32, place a marker, repeat from star around. Dec. 1 st. before each marker (10 sts. decreased), then after each marker alternating, every $2\frac{1}{2}$ inches 8 times (240 sts. — 20 inches). Dec. 10 sts. every 2 inches twice (220 sts. — 24 inches). Dec. 10 sts. every inch 6 times (160 sts. — 30 inches) and bind off. Finish with 2 rows of s.c. around bottom edge and block to: length 30 inches, hip 38 inches.

BLOUSE

BACK: Cast on 78 sts. on straight needles for bottom edge. Place a marker 20 sts. in from each end of needle for darts. Inc. 1 st. on both side seams and 1 st. before first marker and 1 st. after second marker (4 sts. increased) every inch 6 times (102 sts.). Work even until back measures 8 inches from beg.

Armholes: Bind off 5 sts. at beg. of next 2 rows, 2 sts. at beg. of next 6 rows. Then dec. 1 st. at both armholes on every other K row 5 times (70 sts.). Work even until back measures 7 inches from beg. of armholes.

Shoulders: Bind off 6 sts. at beg. of next 4 rows, 5 sts. at beg. of next 4 rows. Bind off remaining sts. (neck) on following row.

RIGHT FRONT: Front has diagonal openwork stripes worked to form a V-shaped vest. Begin first stripe as follows: At beg. of a K row, K 1, y.o., K 2 tog., and K across remainder of row. P all sts. on wrong-side rows. Work second right-side row like first. On third right-side row shift stripe 1 st. to the left as follows: K 2, y.o., K 2 tog., and K across remainder of row. Continue to shift strip 1 st. to the left on every other K row for entire front. As soon as there are 5 sts. before the over (on every 16th row, which is a shift row), begin a new stripe at center front as follows: K 1, y.o., K 2 tog., K 2, y.o., K 2 tog., and K across remainder of row. Between stripes after the 2 sts. which are K tog. and before the next y.o., always K 2 sts. plain. There will be 7 stripes in all, the last starting just below neckline.

Cast on 16 sts. for bottom edge and place a marker for a dart 20 sts. from side edge (end of a K row). Work even $\frac{1}{2}$ inch, then begin and continue openwork stripes as directed above. *In the meantime*, inc. 1 st. on side edge and 1 st. after marker (2 sts. increased) every inch 6 times (58 sts.). Work even until front measures 8 inches from beg.

Armhole: Bind off 5 sts. at beg. of next P row, 2 sts. at beg. of next 3 P rows. Dec. 1 st. at armhole on next K row, then on every other K row until 38 sts. remain on needle. When front measures about 5 inches from beg. of armhole —

Neck: Bind off 6 sts. at beg. of next K row, 2 sts. at beg. of next 2 K rows. Now dec. 1 st. at neck edge at beg. of every K row until 22 sts. remain on needle. Front should measure about 7 inches from beg. of armhole.

Shoulder: Bind off 6 sts. at beg. of next 2 P rows, 5 sts. at beg. of 2 following P rows.

LEFT FRONT: Work to correspond to right front. Shift openwork stripes to the *right* and K the 2 sts. *before* y.o. tog. instead of the 2 sts. after y.o. Thus to begin first openwork stripe, work the last 3 sts. of a K row as follows: K 2 tog., y.o., K 1.

SLEEVES: Cast on 66 sts. for lower edge. Work until sleeve measures $3\frac{1}{2}$ inches, increasing 1 st. on both edges at $1\frac{1}{2}$, $2\frac{1}{2}$ and $3\frac{1}{2}$ inches (72 sts.).

CAP: Bind off 5 sts. at beg. of next 2 rows (62 sts.). Now place a marker for a dart at exact center of sleeve. On next K row, dec. 1 st. at both ends of needle and inc. 1 st. on both sides of marker. Dec. 1 st. at both ends of needle and inc. 1 st. on both sides of marker on every other K row 4 more times (still 62 sts. — end of dart). Now dec. 1 st. at both ends of needle on every other K row 5 times (52 sts.). Now dec. 1 st. at both ends of needle on every K row 8 times (36 sts.). Bind off remaining sts. tightly, knitting 2 sts. tog. across entire row. Cap should measure about 7 inches in length.

CUFF: With wrong side of sleeve toward you, pick up 64 sts. along bottom edge of sleeve. P 1st row and work even for 1 inch. *To curve edge:* Dec. 1 st. at both ends of needle on next 3 K rows; then bind off 2 sts. at beg. of next 2 rows, 3 sts. at beg. of next 2 rows, and remaining sts. on following row. Cuff should measure about $2\frac{1}{2}$ inches in width.

Work second sleeve and cuff to match.

FINISHING: Block all pieces separately. Sew shoulder, side and sleeve seams.

COLLAR: With wrong side of blouse toward you, pick up 75 sts. around neck edge. P 1st row and work even for $\frac{5}{8}$ of an inch. *To curve edge:* Dec. 1 st. at both ends of next K row, work next K row plain, dec. 1 st. at both ends of next K row, work next K row plain, then bind off 2 sts. at beg. of next 2 rows, 3 sts. at beg. of next 2 rows and remain-

(Continued on page 21)



STYLE NO. 1093— BERNAT'S Blossom yarn is lovelier than ever in a very plain, very sophisticated one-piece dress. Perfect for Spring and Summer days when you want to look your best.

MISSING
PAGE

One-Piece Dress of Bouclé de Laine

STYLE NO. 1116

SIZE 16

LIST OF MATERIALS WITH INSTRUCTIONS FOR KNITTING

BERNAT'S Bouclé de Laine, No. 581, white, 14 balls

BERNAT'S Veltine, No. 3321, chartreuse, 1 skein

BERNAT'S Veltine, No. 3355, navy, 1 skein

Knitting Needles: One No. 2 circular steel needle (Standard); one pair No. 2 straight needles (Standard)

GAUGE: $7\frac{1}{2}$ stitches=1 inch, 11 rows=1 inch

SKIRT

On circular needle cast on 360 sts. Join, being careful not to twist sts. Work even for 8 inches.

Then dec. as follows: 10 sts. in 1 round by knitting 35th and 36th sts. tog., K 5 inches even; 10 sts. in 1 round by knitting 34th and 35th sts. tog., K $2\frac{1}{2}$ inches even; 10 sts. in 1 round by knitting 33rd and 34th sts. tog., K $2\frac{1}{2}$ inches even; 10 sts. in 1 round by knitting 32nd and 33rd sts. tog., K 1 inch even; 10 sts. in 1 round by knitting 31st and 32nd sts. tog., K 1 inch even; 10 sts. in 1 round by knitting 30th and 31st sts. tog., K 1 inch even; 10 sts. in 1 round by knitting 29th and 30th sts. tog., K 1 inch even; 10 sts. in 1 round by knitting 28th and 29th sts. tog., K 1 inch even; 10 sts. in 1 round by knitting 27th and 28th sts. tog., K 1 inch even; 10 sts. in 1 round by knitting 26th and 27th sts. tog., K 1 inch even; 10 sts. in 1 round by knitting 25th and 26th sts. tog., K 1 inch even; 10 sts. in 1 round by knitting 24th and 25th sts. tog., K 1 inch even; 10 sts. in 1 round by knitting 23rd and 24th sts. tog., K 1 inch even; 10 sts. in 1 round by knitting 22nd and 23rd sts. tog., K 1 inch even.

S.c. 1 inch around top and $\frac{1}{2}$ inch around bottom. Make inside casing for elastic at waistline after sewing to blouse.

BLOUSE

BACK: On straight needles, cast on 110 sts. and work even for 1 inch. Then inc. in every 5th st. once across, making 130 sts. Work even for 8 inches above the inc. (9 inches in all). Bind off 6 sts. on each end, then K 2 tog. on each end of every K row 8 times. Work even until piece measures 4 inches above the beg. of armhole (measured straight). Divide work to leave slit and work even for 3 inches on each piece. Then bind off 6 sts. at the beg. of every arm edge row 4 times on each side, then 8 sts. once. Bind off remaining sts.

FRONT: Cast on 110 sts. and work even for 1 inch. Inc. in every 4th st. for 1 row, making 136 sts. P back. On the next K row, inc. as follows: K 30, inc. twice in each of the next 11 sts., K 54, inc. twice in each of the next 11 sts., K

30. This makes 180 sts. across front. Work even for 8 inches (9 inches in all). Bind off 8 sts. on each side and K 2 tog. on each end of every K row 8 times. Work until armhole is 5 inches deep, then bind off 30 sts. in the center of the front, working each side separately. Bind off 3 sts. at beg. of every center edge row until 32 sts. remain on each shoulder. Work even until the armhole is 7 inches, then bind off 6 sts. at the arm edge of every row until all the sts. are gone.

SLEEVES: Cast on 75 sts. K even for 1 inch. Inc. 1 st. in every 5th st. once across, making 90 sts. Then inc. 1 st. on each end of 2nd K row 8 times, making 106 sts. on the needles. K even until the entire sleeve measures 4 inches. Bind off 6 sts. on each end, then K 2 sts. tog. on each end of every K row for 4 inches. Bind off 2 sts. at the beg. of every row, both K and P rows, for $1\frac{1}{2}$ inches. Bind off.

SASH: Cast on 35 sts. and work as follows:

Row 1: K 1, inc. 1, K 31, K 2 tog.

Row 2: K 5, P 25, K 5.

Repeat these 2 rows for 52 inches.

FINISHING OF BLOUSE: Mark center front of the neckline and place 6 $\frac{1}{2}$ -inch tucks in neck, 1 inch apart (3 tucks each side of the center). Sew each tuck down for 2 inches. Neck should then measure 15 inches.

CROCHET EDGE: Row 1: Using white, 1 row of s.c.

Row 2: Using navy Veltine, 1 s.c. in each st.

Row 3: Using chartreuse, * 1 s.c. in each of 5 sts., 1 d.c. around the 6th s.c. in row 1. Repeat from * once across.

Row 4: With white Bouclé de Laine, 1 s.c. in each of 2 sts., 1 d.c. around 3rd s.c. in row 2. * 1 s.c. in each of next 5 sts., 1 d.c. around next s.c. in row 2. Repeat from star across row.

Row 5: Using navy, * 1 s.c. in each of 5 sts., 1 d.c. around the d.c. in row 3. Repeat for 1 row.

Row 6: Using chartreuse, 1 s.c. in each of 2 sts., * 1 d.c. around d.c. in row 4, 1 s.c. in each of next 5 sts. Repeat from star for 1 row.

Then repeat rows 4, 5 and 6 once more.

Finish each end of the sash in the same crochet edge.

Tailored Suit of Leemont

STYLE NO. 1099

LIST OF MATERIALS WITH INSTRUCTIONS FOR KNITTING

SIZE 16

BERNAT'S *Leemont*, No. 5718, mascara brown, 20 balls
Knitting Needles: One No. 2 circular needle (Standard);
one pair No. 7 needles (Standard)
One steel crochet hook No. 1

GAUGE:

Skirt: 7 stitches = 1 inch, 11 rounds = 1 inch

Jacket: 8 stitches = 1 inch, 11 rows = 1 inch

SKIRT

Using No. 2 circular needle and starting at bottom, cast on 481 sts. Join, being careful not to twist sts.

1st round: * K 6, P 7 *, repeat between stars 36 more times. Work 5 inches same as first round.

1st dec. round: Dec. 1 st. in every K rib (37 decs.). Work 3 inches even.

2nd dec. round: Dec. 1 st. in K rib (37 decs.). Work 2 inches even.

3rd dec. round: Dec. 1 st. in every K rib (37 decs.). Work 3 inches even.

4th dec. round: Dec. 1 st. in every P rib (37 decs.). Work 3 inches even (about 16 inches up with 333 sts. left).

5th dec. round: Dec. 1 st. in every P rib (37 decs.). Work 4½ inches even (about 50 rounds).

6th dec. round: Dec. 1 st. in every other K rib (18 decs.). Work 4 inches even (about 44 rounds) (about 24½ inches up with 278 sts. on needle).

7th dec. round: Dec. 1 st. in every K 3 rib (19 decs.). Work 4 inches even.

8th dec. round: Dec. 1 st. in every other P rib (18 decs.). Work 1 inch even (about 11 rounds) (29½ inches up with 241 sts. on needle).

9th dec. round: Dec. 1 st. in every P 5 rib (19 decs.). Work 1 inch even (about 30½ inches up with 222 sts. on needle).

Bind off. Make inside casing for elastic.

JACKET

PATTERN STITCH: Multiple of 2 plus 1, used throughout jacket.

1st row: * K 1, pass yarn to front of needle and slip the next st. as if to P, pass yarn to back of needle *. Repeat between stars, ending row with K 1.

2nd row: * slip the first st. as if to P; P 1, pass yarn to back of needle as if to K *. Repeat between stars, ending row with slip st.

Repeat these 2 rows throughout for pattern, being careful that the st. you slip is the one that was worked (K or P, whichever the case may be) in the preceding row.

BACK: Cast on 121 sts. Work 2½ inches even. Starting on next row, dec. 1 st. at both sides of every 3rd row 10 times.

Work 2 inches even. Starting on next row, inc. 1 st. at both sides of every 3rd row 20 times (141 sts.). Work 1½ inches even.

Shaping Armholes: Bind off 2 sts. beg. next 4 rows. Starting on next row, dec. 1 st. at both sides of every 3rd row 15 times. Work 2¼ inches even.

Slanting Shoulders: Bind off 3 sts. beg. next 22 rows (33 sts. bound off for each shoulder). Bind off remaining 37 sts. for neck.

LEFT FRONT: Cast on 53 sts. Work 1 row even. Starting on next row, cast on 2 extra sts. beg. every row at front edge 8 times (69 sts.). Work 1 inch even. Starting on next row, dec. 1 st. at underarm edge of every 3rd row 4 times.

Starting Pocket: On next row, put 15 sts. at underarm edge on st.-holder, then work on the 50 sts. on needle as follows: While working front edge even, bind off 3 sts. beg. next 3 rows at other edge (pocket edge). Then starting on next row, dec. 1 st. at same edge every other row 3 times, then every row 12 times, thus slanting pocket in 23 rows. Slip the remaining 26 sts. onto a st.-holder. Cast on 24 sts. and work about 2½ inches even in pattern st. for pocket lining. Then take the 15 sts. at underarm edge from st.-holder (39 sts. now on needle). Starting on next row, dec. 1 st. at underarm edge every 5th row 3 times, while working pocket edge even. Then work 8 rows even at both edges. Take the 26 sts. from st.-holder and work in pattern across row (62 sts. now on needle). Work 1 inch even. Starting on next row, inc. 1 st. at underarm edge every 3rd row 20 times (82 sts. on needle). Work 1 inch even.

Starting Second Pocket: On next row, put 32 sts. at underarm edge on st.-holder and work on the remaining 50 sts. on needle as follows: While working front edge even, bind off 3 sts. beg. next 3 rows at pocket edge. Then starting on next row, dec. 1 st. at same edge every other row 3 times, then every row 12 times, thus slanting pocket in 23 rows. Slip the remaining 26 sts. onto a st.-holder. Cast on 24 sts. and work about 2½ inches even in pattern st. for pocket lining. Then take the 32 sts. at underarm edge from st.-holder (56 sts. now on needle). Then, while working pocket edge even for 23 rows, work about 5 rows even at underarm edge, then shape armhole as follows: bind off 3 sts. beg. next 2 rows at underarm edge, then starting on next row dec. 1 at same edge every 3rd row 5 times. Work 1 row even. Take the 26 sts. from st.-holder and work in pattern across row (71 sts. now on needle).

(Continued on page 43)



STYLE NO. 1088— There's swing to the skirt and style galore in the jacket of this two-piece handknit. BERNAT'S Leemont is the yarn used so successfully.



STYLE NO. 1107—Two-piece suits can be exciting! We prove it by flaring the skirt, putting a zipper up the front of the jacket and adding four patch pockets. Of BERNAT'S Bouclé de Laine with Shetland trim.

Two-Piece Dress of Boucle de Laine

STYLE NO. 1107

LIST OF MATERIALS WITH INSTRUCTIONS FOR KNITTING

SIZE 16

BERNAT's Bouclé de Laine, No. 561, dark navy, 15 balls

BERNAT's Shetland Floss, No. 1152, jockey red, 1 ball

BERNAT's Shetland Floss, No. 1195, white, 1 ball

Knitting Needles: One No. 2 circular steel needle (Standard); one pair No. 2 straight needles (Standard)

One crochet hook No. 1 (Standard). One large-eyed needle

GAUGE: 8 stitches = 1 inch, 11 rows = 1 inch

SKIRT

Starting at bottom, cast on 460 sts. (Use 2 ends of yarn when casting on throughout suit.) Join, being careful not to twist sts. Continue with one thread only.

1st round: * K 114, P 1 *, repeat between stars 3 more times. You will have 4 panels of 114 sts. each and 1 P st. between panels which continue all the way up skirt. Work $4\frac{1}{2}$ inches even.

1st dec. round: * K 27, K 2 tog., K 27, K 2 tog., K 27, K 2 tog., K 27, P 1 *, repeat between stars 3 more times (12 decs.).

Repeat the above dec. every inch, having 1 st. less between the decs. each time 4 more times ($8\frac{1}{2}$ inches - 400 sts.); every $2\frac{1}{2}$ inches 3 times (16 inches - 354 sts.); every $1\frac{1}{2}$ inches 4 times (22 inches - 316 sts. on needle); every $2\frac{1}{2}$ inches twice (27 inches - 292 sts.); every $\frac{1}{2}$ inch 5 times ($29\frac{1}{2}$ inches - 232 sts.). Work $\frac{1}{2}$ inch even, or to desired length. Bind off remaining 232 sts. Make inside casing for elastic.

BLOUSE

BACK: Using No. 2 straight needles, cast on 124 sts. Work $2\frac{1}{2}$ inches even in stockinette st. Starting on next row, dec. 1 st. at both sides of every 3rd row 11 times. Work 2 inches even. Starting on next row, inc. 1 st. at both sides of every 3rd row 19 times. Work $1\frac{1}{2}$ inches even (140 sts.). (Work should measure about 14 inches at underarm.) Shape armholes by binding off 3 sts. beg. next 4 rows. Starting on next row, dec. 1 st. at both sides of every 3rd row 12 times. Work 3 inches even (armhole $6\frac{1}{2}$ inches deep). Slant shoulders by binding off 3 sts. beg. next 20 rows, then 2 sts. beg. next 2 rows (32 sts. bound off for each shoulder). Bind off remaining 40 sts. for neck.

LEFT FRONT: Cast on 70 sts. Work $2\frac{1}{2}$ inches even in stockinette st. Starting on next row, dec. 1 st. at underarm edge of every 3rd row 11 times. Work 2 inches even. Starting on next row, inc. 1 st. at underarm edge of every 3rd row 19 times (78 sts.). Work $1\frac{1}{2}$ inches even. (Work

should measure same as back at underarm.) Shape armhole by binding off 3 sts. beg. next 2 rows at underarm side. Starting on next row, dec. 1 st. at same edge every 3rd row 12 times. Work 3 inches even. Slant shoulder and shape neckline by binding off 3 sts. beg. next 10 rows at armhole edge, then 2 sts. beg. next row at same side for shoulder, while binding off 4 sts. 3 times at front edge, then decreasing 1 st. at same edge for neck every row 15 times. Bind off remaining st. Work right front to correspond, being careful to shape correct edge for underarm.

SLEEVE: Cast on 84 sts. Work $1\frac{1}{2}$ inches even in stockinette st. Starting on next row, inc. 1 st. at both sides of every 3rd row 10 times. Work $\frac{1}{2}$ inch even. (Sleeve should measure about $4\frac{1}{2}$ inches at underarm.) Bind off 2 sts. beg. next 4 rows. Starting on next row, dec. 1 st. at both sides of every row 10 times, every other row 18 times, then every 3rd row 4 times. Bind off remaining 32 sts., working 2 sts. tog. at both ends (cap about $5\frac{1}{2}$ inches deep). Work second sleeve to correspond.

Pocket: Cast on 30 sts. Work $3\frac{1}{2}$ inches even in stockinette st. Bind off. Make 4 pockets alike.

FINISHING: Press each piece separately. Sew seams neatly. Fit sleeves into armholes, gathering the extra fullness towards top of sleeves.

Work embroidery as follows: **Pockets:** Thread a needle with 1 end of red Shetland Floss and 1 end of white Shetland Floss and double it so that you will be working with 4 ends. Overcast the edges all around each pocket, running needle through about $\frac{1}{4}$ of an inch from edge. Then make 5 French knots in 1 row about $\frac{1}{2}$ inch from top edge and work 5 rows of French knots, alternating them on each row. **Jacket:** Overcast the jacket in the same manner as the pocket edges all around neck, front edges and bottom. Sew a 20-inch zipper at front and a band of bias piqué around neckline, and at bottom of sleeves to form cuffs. Sew the 4 pockets in place.

STYLE NO. 1093

(Continued from page 14)

ing sts. very loosely, on following row. Collar should measure about 2 inches in width.

FINISHING (Cont'd): Work 5 rows of s.c. back and forth along center front edge of left front. Work a band of crochet on right front to correspond, making 6 buttonholes as follows: On 3rd row of crochet, at beg. of each (except 1st) openwork stripe, skip 2 sts. in row below and ch. 2 sts. above skipped sts. Work 1 row of s.c. around collar and cuff edges, press and tack in place. Sew buttons to left front and a snap fastener at neck. Join skirt and blouse, right sides tog., with 1 row of s.c.

One-Piece Dress of Florelle

STYLE NO. 1110

LIST OF MATERIALS WITH INSTRUCTIONS FOR KNITTING

SIZE 16

BERNAT'S Florelle, No. 7301, yellow, 22 balls

Knitting Needles: One No. 3 circular needle (Standard);

one pair No. 3 straight needles (Standard)

GAUGE: 6 stitches = 1 inch, 10 rows = 1 inch

SKIRT

Cast on 350 sts. Join. Work even for 1 inch. Then dec. by knitting the 34th and 35th sts. tog. for 1 row. Repeat this dec. of 10 sts. every inch 5 times. Then dec. every $1\frac{1}{2}$ inches 4 times, then dec. every $2\frac{1}{2}$ inches 4 times (220 sts. at hip). Then dec. every inch 6 times to 160 sts. Work $\frac{1}{4}$ inch even. Skirt will measure 28 inches. Bind off. Work 3 rows s.c. at top and bottom. Skirt will block to 30 inches.

BLOUSE

BACK: Cast on 80 sts. Work even for 1 inch. Then inc. every 8th st. to 90 sts. Work even for $\frac{1}{2}$ inch. Inc. every 9th st. to 100 sts. Then inc. 1 st. each side every inch to 106 sts. Work even until piece measures $8\frac{1}{2}$ inches. Bind off 6 sts. each side. Then dec. 1 st. each side every K row 5 times to 84 sts. Work even to 8 inches from 6 st. cast off. Bind off 36 sts. center and work even 2 inches on 24 sts. for shoulder. Bind off.

FRONT (Bottom Yoke): Cast on 80 sts. Work even for 8 rows. Then dec. 1 st. each side every K row to 36 sts. Then dec. every row (K and P) to 20 sts. Bind off.

TOP LEFT: Cast on 4 sts. P 1 row, cast on 2 sts. at beg. of every K row to 48 sts. Then cast on 5 sts. at beg. of 4 K rows to 68 sts. Then cast on 12 sts. (80 sts. on needle). Work even to 8 inches from bottom of seam side. At underarm, bind off 8 sts. (beg. P row), then dec. 1 st. each

side every K row 6 times to 60 sts. Work even for 40 rows. Bind off by knitting 2 tog. Work other side to correspond.

GIRDLE: Cast on 30 sts. P 3 sts., turn, K 3 sts., turn; P 6 sts., turn, K 6 sts., turn; P 9 sts., turn, K 9 sts., turn. Continue in same manner, picking up 3 sts. on P row until all sts. are picked up. Work even on 30 sts. for 35 inches from point. Then K 27 sts., turn, P 27 sts., turn; K 24 sts., turn, P 24 sts., turn; K 21 sts., turn, P 21 sts., turn. Continue in same manner until all sts. are saved. Bind off. Make another strip.

SLEEVES: Cast on 55 sts. and work for $2\frac{1}{2}$ inches. Then place 2 markers on needle 19 sts. from each edge. Inc. 1 st. each side and each side of both markers every K row 9 times (54 sts. increased). Work even until sleeve measures $6\frac{1}{2}$ inches from beg. Cast off 8 sts. at beg. of next 2 rows, then 1 st. each side every K row until 52 are left. Cast these off at once.

FINISHING: Sew bottoms of blouse to top of skirt. Make s.c. across back of shoulders and back of neck. Gather front top of blouse to fit back shoulders, and sew back over front. Work s.c. across top of front yoke and gather top to fit. Sew bottom over top. Sew girdle to top of yoke to fit curve, having both pieces meet at neck opening. Sew underarm seams, sleeve seams, and sew sleeves in armhole. Line sash with ribbon.

STYLE NO. 1105

(Continued from page 6)

RIGHT FRONT FACING: Work to correspond to left front facing with incs. and decs. on opposite edges, making 3 buttonholes to match the buttonholes on right front.

RIGHT SLEEVE: Sleeve is started in two separate pieces to make an opening.

1st piece: Cast on 44 sts. and work 3 inches, increasing 1 st. on seam edge (end of K rows) every inch (47 sts.). End with a P row, break yarn and place sts. on a holder.

2nd piece: Cast on 38 sts. and work for 3 inches, increasing 1 st. on seam edge (beg. of K rows) every inch (41 sts.).

To join Pieces: On next K row, work across second piece, lap last 2 sts. of second piece over first 2 sts. of first piece and work these sts. off tog. Then work across first piece (86 sts.). Place a marker for a dart between the 2 overlapped sts.

CAP: Bind off 5 sts. at beg. of next 2 rows (76 sts.). Now dec. 1 st. at both ends of needle and inc. 1 st. on both sides of marker on every other K row 5 times (still 76 sts.—end of dart). Now dec. 1 st. at both ends of every other K row until 66 sts. remain on needle, then on every K row until 46 sts. remain. Sleeve should measure approximately 6 inches from beg. of cap. Bind off rather tightly, knitting 2 sts. tog. across entire row. Work left sleeve to correspond.

BELT: Cast on 14 sts. Work $\frac{1}{2}$ inch, then make a slit for tie as follows: On next K row, K 4, bind off 6, K 4; on following row cast on 6 sts. above those bound off below. Now work even until belt measures $25\frac{1}{2}$ inches, then make a second slit to match first. Work another $\frac{1}{2}$ inch and bind off. Work 1 row of s.c. around entire belt edge and work around slits. Back with grosgrain, making slits in grosgrain to match those in belt.

Belt Tie: Cast on 7 sts. and work in seed st. for 30 inches and bind off.

Finishing: Block all pieces separately. Sew edges of diagonal seams on each front. Sew shoulder, side, sleeve and armhole seams. Sew facings to front edges, right sides tog.; turn back, press and hem down inside. Work around buttonholes. Cover button moulds with crochet and sew to left front. Finish back of neck and sleeve edges and openings with 1 row of s.c. Work 1 row of s.c. around bottom edge of blouse, lapping right front over left front for width of facing. Join skirt and blouse, right sides tog., with 1 row of s.c. Make a beading for narrow elastic around waistline inside if desired. Baste organdie edging inside around neck edge and along upper edge of each sleeve opening. Fasten sleeve openings with snaps.



STYLE NO. 1110— An entirely new and ever so nice design makes its début in this one-piece dress of BERNAT'S Florelle yarn. You achieve that sculptured look with a separate sash!



STYLE NO. 1115 — Did you ever dream a crochet hook could turn out a dress as charming as this! It's an exclusive BERNAT design to be crocheted of BERNAT'S new Chantilly yarn.

One-Piece Dress of Chantilly

STYLE NO. 1115

LIST OF MATERIALS WITH INSTRUCTIONS FOR KNITTING

SIZE 16

BERNAT'S Chantilly, No. 8942, peach, 15 balls

One steel crochet hook No. 4

GAUGE: 3 patterns = 1 inch, $5\frac{1}{2}$ rows = 1 inch

PATTERN STITCH:

1st row: Make a ch. the desired length. Make a s.c. in 2nd ch. from hook, * pulling up a loop about $\frac{3}{8}$ of an inch long, y.o. hook and pull a small loop through the long loop, insert hook in back post of long loop and make a s.c., skip 1 ch., make a s.c. * This forms a pattern. Repeat between stars to end of row. Before turning, always pull a long loop and complete st.

2nd row: * Insert hook in eye formed by long loop of preceding row, slipping hook under the two top strands of eye, make a s.c., pull a long loop, y.o. hook, pull a small loop through the long loop, insert hook in back post of long loop just made, and make a s.c. * Repeat between stars to end of row.

SKIRT

Ch. about 210. (We say about 210, as it is very difficult to determine the exact number of ch. for the first round, so if there are any left at the end of round, just let it hang.)

1st round: * Work 3 patterns as given in pattern st., then make 4 s.c. * Repeat between stars 19 more times, making 3 s.c. at last repeat only, thus having 20 panels of 3 patterns each with 20 s.c. stripes (the s.c. stripes will have 5 sts., counting the 1 s.c. of 3rd pattern. The loop for the first pattern st. is pulled up in the last of 4 s.c.) between. Always join at the end of each round with a slip st., then turn.

2nd round: * Work 4 s.c., then work 3 patterns *. Repeat between stars 19 more times, then join with a slip st. and turn.

* Work $\frac{1}{2}$ inch even. On next round, inc. 1 pattern in every 5th panel (4 incs.) * Repeat between stars 4 more times, working the incs. each time in panels which have not already been increased (about $3\frac{1}{2}$ inches down with 4 patterns in each panel). Work 1 inch even (about). * Then inc. 1 pattern in every 5th panel (4 inc.). Work 1 inch even * Repeat between stars 4 more times, working the incs. each time in panels which have not already been increased (about $10\frac{1}{2}$ inches down with 5 patterns in each panel). Work 2 inches even (about $12\frac{1}{2}$ inches down). * Then inc. 1 pattern in every 5th panel (4 incs.). Work 2 inches even *. Repeat between stars 4 more times, working the incs. each time in panels which have not already been increased (about $22\frac{1}{2}$ inches down with 6 patterns in each panel). Work 1 more inch even. * Then inc. 1 st. in every other panel (10 incs.). Work $\frac{1}{2}$ inch even * Repeat between stars once more, increasing in the panels

which were not increased the first time (7 patterns in every panel). Work about 4 inches even or until skirt measures about $28\frac{1}{2}$ inches. (Skirt will be about $29\frac{1}{2}$ inches when blocked.)

BODICE

BACK: Ch. about 90. Work about 2 inches even, starting with 3 pattern sts., having 9 panels with 3 patterns each and 8 stripes of 4 s.c. each. Starting on next row, inc. 1 st. at both sides of every 5th row 5 times (working the increased sts. in pattern). Work 1 inch even (about $7\frac{1}{2}$ inches at underarm).

Shaping Armholes: * Slip st. over 2 patterns at beg. of next row, work to within 2 patterns of end of row, turn *. Repeat between stars once more. Starting on next row, dec. 1 st. at both sides of every 6th row 3 times. From now, work in s.c. Having 75 s.c. in row, work even until armhole is about $6\frac{1}{2}$ inches deep.

Slanting Shoulders: * Slip st. over 4 s.c. at beg. of row, work to within 4 s.c. of end of row, turn *. Repeat between stars twice more. * Slip st. over 3 s.c. at beg. of row, work to within 3 s.c. of end of row, turn *. Repeat between stars 3 more times (24 s.c. off for each shoulder). Fasten off.

FRONT: ch. about 100. Then (starting with 3 pattern sts.) having 10 panels with 3 patterns each and 9 stripes of 4 s.c. each, work same as back. When you start the yoke of s.c. you will have about 85 s.c. instead of 75 as on the back.

SLEEVE: Ch. about 50. Work about 2 inches even, having 5 panels of 3 patterns each, 4 stripes of 4 s.c. each, and 1 s.c. at each side. On next row, inc. 1 pattern in each panel and also 1 s.c. at both sides of row. Work 1 inch even. On next row, inc. 1 pattern in each panel and also 1 s.c. at both sides of row. Work $1\frac{1}{2}$ inches even (about $4\frac{1}{2}$ inches long at underarm with about 13 inches across). Slip st. over 3 s.c. and 1 pattern at beg. of row, and work to within 1 pattern and 3 s.c. at end of row. On next row, slip st. over 2 patterns and work to within 2 patterns of end of row. Starting on next row, dec. 1 st. at both sides of every other row twice, then every 4th row 6 times. (When you come to the s.c. stripes when decreasing at sides, dec. 2 sts. instead of 1 at both sides.) Fasten off. Work second sleeve to correspond.

FINISHING AND ASSEMBLING: Press each piece separately. Sew seams neatly, leaving shoulders open. Fit sleeves into armholes, holding in the extra fullness towards top of sleeves. Join bodice to skirt. Then sew a 4-inch zipper in matching color in each shoulder. Then make the following crochet around bottom of skirt: * Make 2 s.c. in each of the 2 first eyelets of scallop, then 3 s.c. in each of the next 3 eyelets, and 2 s.c. in the 2 last eyelets, then make 3 slip sts. over the s.c. stripe *. Repeat between stars around bottom of skirt.

Shirred Chantilly One-Piece Dress

STYLE NO. IIII

LIST OF MATERIALS WITH INSTRUCTIONS FOR KNITTING

SIZE 16

BERNAT's Chantilly, No. 8954, bleu couture, 15 balls

Knitting Needles: One No. 1 circular steel needle (Standard); one pair No. 1 straight steel needles (Standard)

One steel crochet hook No. 2

Gauge: 7 stitches=1 inch, 11 rounds=1 inch

SKIRT

Starting at bottom and using No. 1 circular needle, cast on 384 sts. Join, being careful not to twist sts. P 2 rounds even (reverse side of work).

* * 3rd round: * K 1, increase 1 in next st. *, repeat between stars to end of round.

4th round: K around.

5th round: Insert needle in first st. as if to K, then when putting yarn over needle as when knitting, put it over needle twice instead of once, work every st. in round in this manner, thus having 2 loops on needle for every st.

6th round: K, letting one of the loops drop from needle.

Repeat the 5th and 6th rounds twice more.

11th round: * K 1, K 2 tog. *, repeat between stars to end of round.

12th round: K around.

P 4 rounds even **.

Repeat the 14 rounds between double stars for pattern. From the 3rd round to the 12th round inclusive makes a puff, and the 4 P rounds form a stripe. The entire skirt is worked in pattern.

Then work 4 puffs with 3 stripes between even (this includes the puff and stripe given above) (about 4¾ inches up).

* On the 2nd round of next stripe, dec. 8 sts. by P tog. every 47th and 48th sts. Work 1 puff even *. Repeat between stars 4 more times, having 1 st. less between the decs. each time (about 11 inches up with 344 sts. on needle).

* On the 2nd round of next stripe, dec. 6 sts. by P tog. every 56th and 57th sts. Work 1 puff even *. Repeat between stars 11 more times, having 1 st. less between the decs. each time (about 25 inches up with 272 sts. on needle).

* On the 2nd round of next stripe, dec. 20 sts. by P tog. every 12th and 13th sts. Work 1 puff even *. Repeat between stars once more, having 1 st. less between the decs.

Then P 1 inch, decreasing 15 sts. on the 2nd round by P tog. every 14th and 15th sts. Bind off remaining 217 sts. Make inside casing for elastic.

BODICE

Using No. 1 circular needle and starting at bottom, cast on 214 sts. Join, being careful not to twist sts. * work 1

puff even. On 2nd round of next stripe (first stripe), inc. 1 st. in every 35th st. (6 incs.) *. Repeat between stars 3 more times, having 1 st. more between the incs. each time (238 sts.). Work even until you have completed the 6th puff from beg. On next round (1st round of 6th stripe) put 124 sts. on st.-holder for front of bodice, and work on remaining 114 sts. for back as follows:

Shaping Armholes: (from now on, work back and forth on circular needle, or use the No. 1 straight needles. The pattern st. will now be worked as follows:

** 1st row: * K 1, inc. 1 in next st. *, repeat between stars across.

2nd row: K across.

3rd row: P across.

4th row: K across, putting yarn over twice instead of once as before.

5th row: P across, letting one of the loops drop from needle.

Repeat the 4th and 5th rows twice more.

10th row: * K 1, K 2 tog. *, repeat between stars across.

K 1 row, P 1 row, K 1 row, P 1 row **.

These 14 rows between double stars complete the pattern st. as done on straight needles. Bind off 7 sts. beg. of next 2 rows. Dec. 1 st. at both sides of every 4th row 7 times, always keeping 2 sts. in stockinette st. all the way up armholes. Work even until you have completed the 3rd stripe from beg. of armhole. From then on, work yoke in the following pattern:

1st row (right side of work): * K 1, inc. 1 in next st. * repeat between stars to end of row.

2nd row: K across, putting yarn over twice instead of once as done on the puffs.

3rd row: P, letting one of the loops drop from needle.

4th row: * K 1, K 2 tog. *, repeat between stars to end of row.

K 1 row, P 1 row, K 1 row, P 1 row.

Repeat the above rows for yoke, shaping as follows: Work 3½ inches even (about 36 rows, including the above 8 rows).

Slanting Shoulders: Bind off 3 sts. beg. next 12 rows, then 2 sts. beg. next 10 rows (28 sts. bound off for each shoulder). Bind off remaining 30 sts. for neck.

FRONT: Take the 124 sts. from st.-holder for front of bodice, and shape as follows:

Shaping Armholes: Bind off 7 sts. beg. next 2 rows. Starting on next row, dec. 1 st. at both sides of every 4th row 7 times, always keeping 2 sts. in stockinette st. all the way up the armholes. Work even until you have completed the 3rd stripe from beg. of armhole. Then put 48 sts. on st.-holder for one side of neck. Then working in the

(Continued on page 48)



STYLE NO. 1111— There's subtle glamour in this one-piece dress of BERNAT'S Chantilly yarn. Fits like your skin and has one of those softly flaring skirts.



STYLE NO. 1124— Of BERNAT'S newest yarn — "Florelle" — is this two-piece handknit. Be sure to make the pert little hat to go with it, and use wooden cap beads for ultra-smart trim!

Two-Piece Dress of Florelle

STYLE NO. 1124

LIST OF MATERIALS WITH INSTRUCTIONS FOR KNITTING

SIZE 16

BERNAT's Florelle, No. 7342, 20 balls

BERNAT's Shetland Floss, 1 ball for accessories

Knitting Needles: One No. 4 circular needle (Standard); one pair No. 4 steel needles (Standard); one pair No. 2 steel needles (Standard); one crochet hook No. 4 (Standard)

GAUGE: 7 stitches = 1 inch, 11 rows = 1 inch

SKIRT

PATTERN STITCH: 1st round: K.

2nd round: * K 1, pass yarn to front of needle, slip next st. as if to P, pass yarn to back of needle *, repeat between stars to end of round.

3rd round: K.

4th round: * Pass yarn to front of needle, slip next st. as if to P, pass yarn to back of needle, K 1 *, repeat between stars to end of round.

These 4 rounds complete the pattern st. The entire skirt is worked in pattern.

Starting at bottom and using No. 4 circular needle, cast on 350 sts. Join, being careful not to twist sts. Put in a marker at beg. of round and a second one after the first 175 sts. We suggest putting in 2 different colored markers so that you may see when you are at the beg. of your round.

Work 5 inches even in pattern st. Starting on next round, dec. 2 sts. at both sides of both side marks (8 sts. dec.) every 2 inches 6 times (about 15 inches up, with 302 sts. on needle); every 1½ inches 6 times (about 24 inches up, with 254 sts. on needle); every 1 inch 5 times (about 29 inches up, with 214 sts. on needle). On next round, dec. 1 st. at both sides of each marker. Work ½ inch even (about 6 rows). Bind off remaining 210 sts. Make inside casing for elastic.

BLOUSE

PATTERN STITCH: 1st row: P across.

2nd row: * K 1, pass yarn to front of needle, slip next st. as if to P, pass yarn to back of needle *, repeat between stars to end of row.

3rd row: P across.

4th row: * Pass yarn to front of needle, slip next st. as if to P, pass yarn to back of needle, K 1 *, repeat between stars to end of row.

These 4 rows complete the pattern st. The entire jacket is worked in pattern.

BACK: Cast on 106 sts. Work 2½ inches even in pattern. Starting on next row, dec. 1 st. at both sides of every 4th row 7 times.

Work 2 inches even. Starting on next row, inc. 1 st. at both sides of every 5th row 16 times. Work 1 inch even. (Work should measure about 14½ inches at underarm.) Shape armholes by binding off 3 sts. beg. next 4 rows. Starting on next row, dec. 1 st. at both sides of every 3rd row 10 times. Work 3½ inches even. (Armhole about 6½ inches deep.) Slant shoulders by binding off 3 sts. beg. next 8 rows, then 2 sts. beg. next 14 rows (26 sts. bound off for each shoulder). Bind off remaining 40 sts. for neck.

FRONT: Cast on 114 sts. Work 2½ inches even in pattern. Starting on next row, dec. 1 st. at both sides of every 4th row 8 times. Work 2 inches even. Starting on next row, inc. 1 st. at both sides of every 5th row 16 times. Work ½ inch even (130 sts.). (Work should measure same number of rows as back.)

Shape armholes by binding off 3 sts. beg. next 4 rows. Starting on next row, dec. 1 st. at both sides of every 3rd row 10 times. On next row, work across 21 sts. and slip them onto st.-holder, work across 56 sts. and slip the remaining 21 sts. onto a st.-holder (56 sts. left on needle). Starting on next row, dec. 1 st. at both sides of every 3rd row 9 times, then every other row 7 times (24 sts. left on needle). Starting on next row, dec. 1 st. at both sides of every row 5 times. Bind off remaining 14 sts., working 2 sts. tog. twice at both ends to round corners. Then take the 21 sts. from st.-holder for one side and work as follows: Starting on next row, inc. 1 st. at inside edge every 3rd row 9 times, then every other row 7 times (37 sts. on needle), while working armhole edge even. Slant shoulder and shape neck by binding off 3 sts. beg. next 4 rows at armhole edge, then 2 sts. beg. next 7 rows at same side for shoulder while decreasing at front edge for neck, 1 st. every 3rd row 4 times, then every other row 6 times. Bind off. Take the 21 sts. from st.-holder for other side, and work to correspond.

SLEEVE: Cast on 56 sts. Work 3 inches even in pattern st. Starting on next row, inc. 1 st. at both sides of every 3rd row 18 times. Work 1 inch even. (Work should measure about 8¾ inches at underarm.) Bind off 2 sts. beg. next 4 rows. Starting on next row, dec. 1 st. at both sides of every other row 8 times, then every 3rd row 14 times. Bind off remaining 40 sts., working 2 sts. tog. at both ends to round corners.

FINISHING AND ASSEMBLING: Press each piece separately. Sew seams neatly. Fit sleeves into armholes, holding in the extra fullness towards top. Then make 2 rows of s.c. around front openings and neck edge. Tack the corner of the opening at right side, and at other side put a small piece of binding tape with a snap to close.

(Continued on page 45)

Two-Piece Dress of Glendown with Cross-Stitch Embroidery Blouse

STYLE NO. 1123

LIST OF MATERIALS WITH INSTRUCTIONS FOR KNITTING

SIZE 16

BERNAT's Glendown, No. 5942, white, 14 balls

BERNAT's English Crewel, No. 613, leaf green; No. 825, peacock; No. 882, rose; No. 738, cherry red; No. 942, greenish gold; No. 826, peacock; No. 616, leaf green; 1 small skein each

Knitting Needles: One pair No. 8 (Standard)

GAUGE: 5 stitches = 1 inch, 10 rows = 1 inch

BLOUSE

PATTERN: Can be used on any number of sts. Row 1 is wrong side of work.

Row 1: * Slip 1 as if to P, y.o. *, repeat across row, ending slip 1, K 1.

Row 2: Slip 1, * K 2 tog., working through back of st. and y.o. of row previous *. Repeat between stars across row, ending K 1.

Repeat these 2 rows throughout.

BACK: Cast on 80 sts. Dec. 1 st. each side every 2 inches 3 times. Work 2 inches even. Then inc. 1 st. each side every inch 6 times. Work even until piece measures 15 inches, and shape armhole by casting off 5 sts. at beg. of next 2 rows, then one st. each side every 4th row 3 times. Work even on balance until armhole measures 3 inches, measured straight, and separate work in center to leave opening for neck. Work each shoulder even until armhole measures 7 inches, measured straight, and slant shoulder by casting off 5 sts. at beg. of 4 armhole side rows. Cast off balance (15 each side).

FRONT: Cast on 85 sts. Dec. 1 st. each side every 2 inches 3 times (79 sts.). Then inc. 1 st. each side every 1/2 inch 8 times (95 sts.). Work even until piece measures same number of rows as back, and shape armholes by casting off 5 sts. at beg. of next 2 rows, then 1 st. each side every 4th row 7 times. Work even until armhole measures 5 1/2 inches and cast off center 15 sts. Working each shoulder separately, dec. 1 st. at neck edge every other row 8 times. *In the meantime*, slant shoulder by casting off 5 sts. every armhole side row 4 times when armhole measures as back.

SLEEVES: Cast on 50 sts. Work for 1 1/2 inches even. Then inc. 1 st. each side every 1/2 inch 5 times. Work 1 inch even and shape cap by casting off 5 sts. at beg. of next 2 rows, then 1 st. each side every 4th row 12 times, then 2 sts. at beg. of next 6 rows. Cast off balance. Make second sleeve the same.

FINISHING: Assemble shoulders and pick up approxi-

mately 85 sts. around neck from center back to center back. Work 1 1/2 inches even, and cast off. Roll and tack down. Roll the 1 1/2 inches at bottom of each sleeve and tack as at neck. Fasten slit at back with small Talon fastener.

(For cross-st. motifs, see charts. Your background as formed by st. is perfect for cross st.)

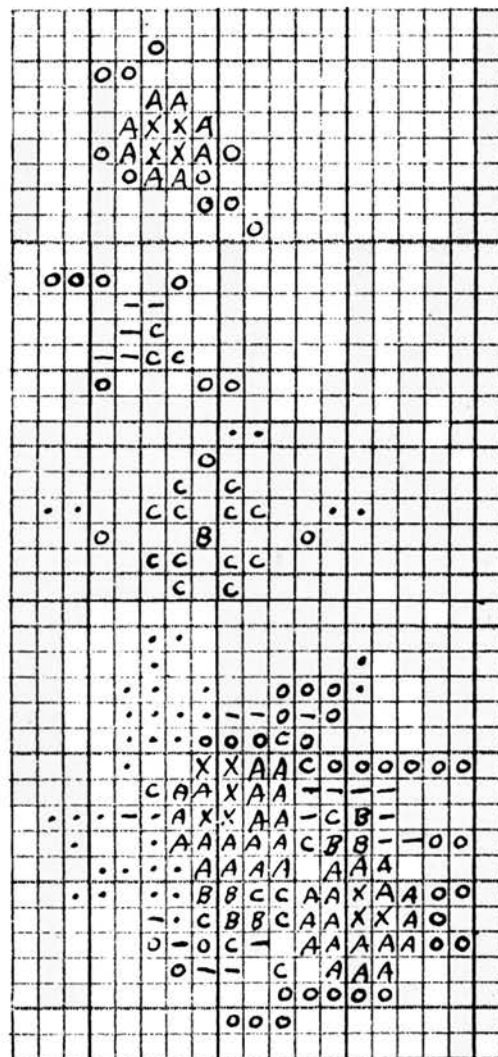
SKIRT

Cast on 120 sts. K in pattern as in blouse as follows:

Row 1: * slip 1 as if to P, y.o. *, repeat between stars across row. (Row 1 is wrong side of work.)

Row 2: Slip 1, K 1, * K 2 tog. across row, working through back of st. and y.o. of row previous, ending K 1 *.

Work 4 inches even. Dec. by omitting the first and last y.o. every inch, then knitting 2 sts. tog. just inside edge sts. alternating, 25 times, working edge sts. in stockinette st. Cast off when skirt measures 30 inches. Make second piece the same and sew tog. neatly. Work s.c. around top and bottom. Make inside casing for elastic.



SYMBOLS

- = Leaf green No. 613.
- o = Leaf green No. 616.
- = Peacock No. 825.
- X = Rose No. 882.
- A = Cherry red No. 738.
- B = Greenish gold No. 942.
- C = Peacock No. 826.



STYLE NO. 1123— A white handknit goes colorful with cross-stitch! This two-piece is knit of BERNAT'S Glendown and its plain design makes it a perfect background for the decorative stitches!



STYLE NO. 1121— A dignified two-piece suit of BERNAT'S very lovely yarn, "Celtaline." This is an excellent suit for town or business wear, and knits up quickly.

Two-Piece Dress of Celtaïne

STYLE NO. 1121

LIST OF MATERIALS WITH INSTRUCTIONS FOR KNITTING

SIZE 16

BERNAT'S Celtaïne, No. 9553, Lyons blue, 20 balls

Knitting Needles: One No. 2 circular steel needle (Standard); one pair No. 7 straight steel needles (Standard)

GAUGE: 7 stitches = 1 inch, 11 rows = 1 inch

BLOUSE

BACK: On straight needles, cast on 105 sts. K 1st row. Work 18 rows stockinette st., ending with a P row.

Row 19: Slip first st., * y.o., K 2 tog. *, repeat between stars across row.

Row 20: Slip first st., * y.o., P 2 tog. *, repeat between stars across row.

Repeat rows 19 and 20 for 2 inches. Inc. 1 st. each side every inch. To keep fagoting even in knitting 2 sts. tog., be sure that the y.o. of previous row is first of K 2 tog. *always*. Alternate 2 inches of fagoting with 14 rows of stockinette until 14 sts. have been added (7 each side). Continue without incs. until piece measures 10 inches. Then shape armholes by casting off at beg. of every row as follows: 7 sts., 7 sts., then 1 st. 14 times. Work even until armhole measures 7 inches, measured straight, from line of first cast-off, and slant shoulders by casting off 7 sts. at beg. of next 8 rows. Hold balance on holder.

FRONT LEFT: Cast on 55 sts. Work in stockinette st. for 18 rows.

Row 19: Slip first st., * y.o., K 2 tog. *, repeat between stars 21 times more, K last 10.

Row 20: P 11, * y.o., P 2 tog. *, repeat between stars to end of row.

Repeat rows 19 and 20, increasing 1 st. at underarm edge every 8th row 10 times, and keep border of 10 sts. in stockinette st. at center edge. Alternate fagoting and stockinette panels as at back and on same row, shape armhole by casting off at beg. of every armhole side row: 7 sts., 2 sts., 2 sts., 1 st. 5 times. Work even until armhole measures 4½ inches, and shape neck by casting off 5 sts. at neck edge, then 2 sts. 3 times, then 1 st. 10 times. Work even at neck edge and slant shoulder by casting off 7 sts. at a time

at armhole edge when armhole measures as back. Shape second front to correspond with 10-st. stockinette panel on opposite edge and making 8 buttonholes, first ¼ inch from bottom and last ¼ inch from first neck cast-off. Space according to rows on opposite front and place by knitting 2 from center edge, casting off 5, working balance, casting 5 sts. back on on return row. Assemble shoulders. Pick up sufficient sts. to reach around neck from inside edge of 5-st. cast-off to inside edge of 5-st. cast-off (including those left on holder at back). Work 14 rows and cast off. Roll and sew down. Face buttonhole and button side of front with similar grosgrain.

SLEEVES: Cast on 70 sts. Work 18 rows stockinette st. Then alternate 2 inches fagoting with 14 rows stockinette, increasing 1 st. each side every ½ inch 10 times. When sleeve measures approximately 5 inches (on same row of same pattern as armhole was shaped), shape cap by casting off 7 sts. at beg. of next 2 rows, then 1 st. at beg. of next 16 rows, then 1 st. each side every 4th row 10 times, then 4 sts. at beg. of every row until all are gone. Pleat fullness at top of shoulder when assembling. Make second sleeve to correspond. Make 3 rows of s.c. around sleeves and bottom of blouse.

SKIRT

On circular needle, cast on 336. Join and work even for 6 inches. Dec. 8 sts. by knitting the 41st and 42nd sts. tog. for 1 round. Repeat this dec. of 8 sts. every 2 inches with 1 less st. between decs. 8 times more (264 sts. — 22 inches). Then dec. 8 sts. in same manner every inch 6 times (216 sts. — 28 inches). Then dec. 8 sts. in same manner every ½ inch 3 times (192 sts. — 29½ inches). Work 2 rows and cast off. Work 3 rows s.c. around top and bottom. Make inside casing for elastic.

Two-Piece Dress of Snowflake

STYLE NO. 1112

LIST OF MATERIALS WITH INSTRUCTIONS FOR KNITTING

SIZE 16

BERNAT'S Snowflake, No. 764, Port bleuative, 13 balls
Knitting needles: One No. 2 circular steel needle (Standard); one pair No. 2 straight needles (Standard).

GAUGE: $7\frac{1}{2}$ stitches = 1 inch, 11 rows = 1 inch

SKIRT

(8 balls)

On circular needle, cast on 360 sts. K 7, P 3, for 1 row and join, being careful not to twist. Continue in ribbing of K 7, P 3, for 4 inches. Put a marker on needle at end of round (just before K 7). * K 5, K 2 tog., P 3, K 7, P 3, K 7, P 3, K 7, P 3 *. Repeat between stars to end of round (9 decs.). Next round: * K 6, P 3, K 7, P 3, K 7, P 3, K 7, P 3 *. Repeat between stars for 3 inches. Next decreasing round (starting at markers): * K 6, P 3, K 7, P 3, K 5, K 2 tog., P 3, K 7, P 3 *. Repeat between stars to end of round (9 decs.). Next round: * K 6, P 3, K 7, P 3, K 6, P 3, K 7, P 3 *. Repeat between stars for 3 inches. Next decreasing round: * K 6, P 3, K 2 tog., K 5, P 3, K 6, P 3, K 7, P 3 *. Repeat between stars around. Next round: * K 6, P 3, K 6, P 3, K 6, P 3, K 7, P 3 *. Repeat between stars for 3 inches. Next decreasing round: * K 6, P 3, K 6, P 3, K 6, P 3, K 2 tog., K 5, P 3 *. Repeat between stars for 1 round. Next round: * K 6, P 3 *. Repeat between stars for 3 inches. Next decreasing round: * K 2 tog., K 4, P 3, K 6, P 3, K 6, P 3, K 6, P 3 *. Repeat between stars to end of round. Next round: * K 5, P 3, K 6, P 3, K 6, P 3, K 6, P 3 *. Repeat between stars for 2 inches. Next decreasing round: * K 5, P 3, K 6, P 3, K 2 tog., K 4, P 3, K 6, P 3 *. Repeat to end of round. Next round: * K 5, P 3, K 6, P 3, K 5, P 3, K 6, P 3 *. Repeat between stars for 2 inches. Next decreasing round: * K 5, P 3, K 4, K 2 tog., P 3, K 5, P 3, K 6, P 3 *. Repeat between stars to end of round. Next round: * K 5, P 3, K 5, P 3, K 5, P 3, K 6, P 3 *. Repeat between stars for 2 inches. Next decreasing round: * K 5, P 3, K 5, P 3, K 5, P 3, K 5, P 3, K 4, K 2 tog., P 3 *. Repeat between stars for 1 round. (Skirt now measures 22 inches 288 sts. on needle.) Next round: * K 5, P 3 *. Repeat between stars for 1 inch. Next decreasing round: * K 3, K 2 tog., P 3, K 5, P 3, K 5, P 3, K 5, P 3 *. Repeat between stars to end of round. Next round: * K 4, P 3, K 5, P 3, K 5, P 3, K 5, P 3 *. Repeat between stars for one inch. Next decreasing round: * K 4, P 3, K 5, P 3, K 3, K 2 tog., P 3, K 5, P 3 *. Repeat between stars to end of round. Next round: * K 4, P 3, K 5, P 3, K 4, P 3, K 5, P 3 *. Repeat between stars for 1 inch. Next decreasing round: * K 4, P 3, K 2 tog., K 3, P 3, K 4, P 3,

K 5, P 3 *. Repeat between stars for 1 round. Next round: * K 4, P 3, K 4, P 3, K 4, P 3, K 5, P 3 *. Repeat between stars for 1 inch. Next decreasing round: * K 4, P 3, K 4, P 3, K 4, P 3, K 2 tog., K 3, P 3 *. Repeat between stars for 1 round. Next round: * K 4, P 3 *. Repeat between stars for an inch. Next decreasing round: * K 2, tog., K 2, P 3, K 4, P 3, K 4, P 3, K 4, P 3 *. Repeat between stars for 1 round. Next round: * K 3, P 3, K 4, P 3, K 4, P 3, K 4, P 3 *. Repeat between stars for 1 inch. Next decreasing round: * K 3, P 3, K 4, P 3, K 2 tog., K 2, P 3, K 4, P 3 *. Repeat between stars for 1 round. Next round: * K 3, P 3, K 4, P 3, K 3, P 3, K 4, P 3 *. Repeat between stars for $\frac{1}{2}$ inch. Next decreasing round: * K 3, P 3, K 2, K 2 tog., P 3, K 3, P 3, K 4, P 3 *. Repeat between stars for 1 round. Next round: * K 3, P 3, K 3, P 3, K 3, P 3, K 4, P 3 *. Repeat between stars for $\frac{1}{2}$ inch. Next decreasing round: * K 3, P 3, K 3, P 3, K 3, P 3, K 2, K 2 tog., P 3 *. Repeat between stars for 1 round. Next round: * K 3, P 3 *. Repeat between stars for 2 rounds and cast off. Work 2 rows of s.c. around top and 4 rows around bottom. Press ribs flat and make inside casing for elastic.

BLOUSE

(5 balls)

FRONT: On straight needles, cast on 125 sts.

Row 1: * K 3, P 3 *. Repeat between stars for 48 sts. K 5, P 5, K 9, P 5, K 5, * P 3, K 3, * repeat between stars for balance of row (face of work).

Row 2: * P 3, K 3 *. Repeat between stars 12 times more. P 5, K 5, P 9, K 5, P 5, * K 3, P 3 *, repeat between stars for balance of row.

Repeat these 2 rows, taking into consideration following decreases and increases. Dec. 1 st. each side every $\frac{1}{2}$ inch 7 times. Work even for 2 inches. Then inc. 1 st. each side every $\frac{3}{8}$ inch 16 times (143 sts.). (Work increases in K 3, P 3, ribbing). Work even until piece measures 14 inches and —

Row 1 (face of work): Cast off 9 sts., * K 3 (counting st. on right needle left from cast off as 1), P 3 *. Repeat between stars 7 times more, K 5, P 19, K 5, * P 3, K 3 *, repeat between stars for balance of row.

Row 2: Cast off 9 sts., P 3, K 3, for 48 sts., P 5, K 19, P 5, * K 3, P 3 * for balance of row.

Row 3: Cast off 2 sts., K 1, * P 3, K 3 * for 45 sts., K 5, P 19, K 5, * P 3, K 3 * for balance of row.

Row 4: Cast off 2, P 1, * K 3, P 3 * for 45 sts., P 5, K 19, P 5 *, K 3, P 3 * for balance of row.

Row 5: Cast off 2, P 2, * K 3, P 3 * for 42 sts., K 5, P 19, K 5, * P 3, K 3 * for balance of row.

(Continued on page 48)



STYLE NO. 1112—BERNAT'S popular Snowflake comes into its own in this smartly tailored two-piece. You'll want to knit more than one of these dresses, for the design is right for so many occasions.



STYLE NO. 1108—Here's the perfect ensemble for the Great Outdoor enthusiast. A warm sweater with stripes, making it important from a style angle. Of two grand yarns: BERNAT'S Fantasie and Manchu.

Two-Piece Suit of Fantasie and Manchu with Striped Blouse

STYLE NO. 1108

LIST OF MATERIALS WITH INSTRUCTIONS FOR KNITTING

SIZE 16

BERNAT'S *Fantasie*, No. 8766, turquoise, 9 balls (skirt)
BERNAT'S *Fantasie*, No. 8766, turquoise, 5 balls (sleeves)
BERNAT'S *Manchu*, No. 6204, beige dove, 3 balls (jacket)
BERNAT'S *Manchu*, No. 6329, wood rose, 3 balls (jacket)
BERNAT'S *Manchu*, No. 6318, clove brown, 3 balls (jacket)
Knitting Needles: one No. 2 circular needle (Standard);
one pair No. 3 steel needles (Standard); one pair No.
2 steel needles (Standard)
One steel crochet hook No. 1 (Standard)

GAUGE:

Skirt — 8 stitches=1 inch, 11 rounds=1 inch
Back and fronts of jacket, pockets and neckband — 5
stitches=1 inch, 11 rows=1 inch
Sleeves of jacket — 8 stitches=1 inch, 11 rows=1 inch

SKIRT

Using No. 2 circular needle and starting at bottom, cast on 456 sts. Join, being careful not to twist sts.

1st round: K.

2nd round: K, inserting needle in through back of st. instead of front, thus twisting sts.

These 2 rows complete the pattern st. The entire skirt is worked in pattern st., the purled side of work being the right side of skirt.

Work 5 inches even in pattern st.

1st dec. round: K tog. every 29th and 30th sts. (15 decs.). Repeat this dec., having 1 st. less between the decs. each time every 1½ inches 4 more times (11 inches, 381 sts.); every 2 inches 3 times (17 inches, 336 sts.); every 4 inches twice (25 inches, 306 sts.); every 1 inch twice; every ½ inch twice (246 sts.). Work ½ inch even. On the next round K tog. every 18th and 19th sts. (13 decs.). Work ½ inch even. Bind off the remaining 233 sts. Make inside casing for elastic.

JACKET

PATTERN STITCH: Using 1 end of beige dove Manchu, wood rose Manchu and turquoise Fantasie tog., K 4 rows. Let these ends hang loosely and join in 1 end of clove brown Manchu, and with this 1 end of brown, K 4 rows. These 8 rows complete the pattern st. When changing from the 3 ends to the 1 end, always twist the 3 ends and the 1 end tog., but do not pull tightly, otherwise you will

draw work. The back and front of jacket are worked lengthwise.

BACK: Using No. 3 needles and 3 ends of yarn (colors as given in pattern st.), cast on 35 sts. Then while working in pattern st., shape as follows: Work 1 row even. Starting on next row, cast on 7 extra sts. beg. next 5 rows at this same side for bottom edge, while working even at other edge for armhole (70 sts. on needle). Starting on next row, inc. 1 st. at armhole edge every row 18 times, while working bottom edge even (88 sts.). On next row, cast on 16 sts. at armhole edge (104 sts.). Starting on next row, inc. 1 st. at armhole edge every 5th row 10 times for shoulder, while working bottom edge even (114 sts.). Then work 53 rows even for neck. Starting on next row, dec. 1 st. at same edge as increased for first shoulder, every 5th row 10 times for second shoulder (104 sts.). On next row, bind off 16 sts. at shoulder edge for armhole. Starting on next row, dec. 1 st. at armhole edge every row 18 times, while continuing to work bottom edge even. Then bind off 7 sts. beg. next 5 rows at bottom edge. Bind off remaining 35 sts.

LEFT FRONT: Using No. 3 needles and 3 ends of the colored yarns, cast on 35 sts. Then while working in pattern st., shape as follows: Work 1 row even. Starting on next row, cast on 7 extra sts. beg. the next 5 rows at this same side for bottom edge, while working even at other edge for armhole (70 sts.). Starting on next row, inc. 1 st. at armhole edge every row 18 times, while working bottom edge even (88 sts.). On next row, cast on 16 sts. at armhole edge (104 sts.). Starting on next row, inc. 1 st. at armhole edge every 5th row 10 times for shoulder, while working bottom edge even (114 sts.). Then bind off 4 sts. beg. of next 7 rows at shoulder edge for neck, while continuing to work bottom edge even. Then work even until you have completed the 15th stripe in the colored yarns from beg. Bind off.

RIGHT FRONT: Work to correspond to left front, but in order to shape the correct edge for underarm, work 2 rows even after casting on at beg. instead of 1 row. Then on the 2nd row of the 14th brown stripe from beg., work buttonholes as follows: Starting at neck edge, K 3 sts., * bind off 5, K 9 *, repeat between stars 4 more times, then bind off 5 sts. for bottom buttonhole, K 8. On next row, cast on 5 sts. directly above those bound off in preceding row, thus

(Continued on page 48)

One-Piece Dress in Veltine

STYLE NO. 1082

LIST OF MATERIALS WITH INSTRUCTIONS FOR KNITTING

SIZE 16

BERNAT's *Veltine*, No. 3331, light rust, 18 skeins

Knitting Needles: One No. 2 circular steel needle (Standard);
one pair No. 2 straight needles (Standard); one pair
No. 4 straight needles (Standard)

Gauge: 8 stitches = 1 inch, 12 rows = 1 inch

PATTERN: Stockinette Stitch

BLOUSE

BACK: On No. 2 straight needle, cast on 100 sts. and work even for 1 inch. Then inc. in every 5th st. once across, making 120 sts. Work even for 7 inches above the inc., making 8 inches in all. Bind off 5 sts. on each side, then K 2 tog. on each end of every K row 5 times. Work even until piece measures 6 inches from the beg. of the armhole, measured straight. Then bind off 6 sts. at the beg. of every row, both K and P, until 30 sts. have been taken off on each side. Bind off the remaining sts. on the next row.

FRONT: Cast on 105 sts. and work even for 1 inch. Then inc. in every 4th st. once across, making 130 sts. Leave opening in the center, 65 sts. on each side. Tie in second ball of yarn and work both sides of front at once. Work garter st. on 10 sts. each side of the opening. On the next row after the opening, inc. as follows: K 30, inc. each of the next 10 sts., K 25 (opening), K 25, inc. each of the next 10 sts., K 30. This makes 75 sts. on each side. Carry the garter st. each side of the opening up the entire front. When entire front is 8 inches, bind off 10 sts. on each side, and K 2 tog. on each end of every K row 12 times. Work until armhole is 5 inches deep, then bind off 12 sts. on each side of the opening, and K 2 tog. on each side of the center every K row until 30 sts. remain on each shoulder. Work even until armhole is 6 inches deep. Bind off 6 sts. at the arm edge of every row until all sts. are taken off. Block front and back separately. Armhole measures 7 inches, measured straight, and underarm measures $9\frac{1}{2}$ inches.

SLEEVES: Cast on 48 sts. and work 2 inches. Then inc. in each end of every 6th row until there are 110 sts. Work even until entire sleeve measures $16\frac{1}{2}$ inches (will block to 18 inches). Bind off 6 sts. on each end and K 2 tog. on each end of every 4th row for 4 inches, then K 2 tog. on each end of every other row for 3 inches. Bind off 2 sts. at the beg. of every row until 6 sts. remain. Bind off.

In assembling sleeves, make a 2-inch inverted pleat at top and a $\frac{1}{2}$ -inch pleat faced toward top at each side. These pleats are sewn at top only, and give squared effect at top of sleeve.

BAND IN NECK: Put shoulder seams tog. and pick up 100 sts. around the neck. Work garter st. for $1\frac{1}{4}$ inches and bind off.

FACING FOR FRONT: Cast on 20 sts. and work garter st. for 14 inches.

FRILL: Cast on 300 sts. on No. 2 needle and work K 1, P 1, ribbing for 1 inch. Inc. 1 st., making 301 sts. Work the following pattern: K 2, * y.o., K 2 tog., repeat from * across row, ending with y.o., K 2 tog., K 1. Work the same pattern on every row (no P). When you have 1 inch, change to No. 4 needle and continue lace pattern for $1\frac{1}{2}$ inches, and bind off. Place frill in 6 box pleats and sew on inside on neckband.

SKIRT

On No. 2 circular needle, cast on 320 sts. Join, being careful not to twist. Work even for 14 inches, dec. by knitting every 15th and 16th sts. tog.; work even for 4 inches, dec. by knitting every 14th and 15th sts. tog.; work even for 2 inches, dec. by knitting every 13th and 14th sts. tog.; work even for 2 inches, dec. by knitting every 12th and 13th sts. tog.; work even for 2 inches, dec. by knitting every 11th and 12th sts. tog.; work even for 2 inches, dec. by knitting every 10th and 11th sts. tog.; work even for 1 inch and bind off. Work 3 rows of s.c. around bottom and 1 row around top. Block to measure finished length 30 inches.

FINISHING AND ASSEMBLING: Sew skirt to blouse at waistline and make inside casing for elastic. Sew the strip at inside of blouse front at the edge of stockinette st. on both sides under the shoulders. Sew fasteners as trim down the front, leaving open at the top sufficient length to go over head. Fasten at top with snap.



STYLE NO. 1082 — Lovely rich Veltine yarn by BERNAT turns a simple one-piece dress into a masterpiece. The hook-and-eye fasteners are very French, as is the frill at the neck.



STYLE NO. 1111— A real swagger coat knit of BERNAT'S Burma Coat yarn. There are four pockets in all, and two of them boast *suède* flower pots. Very new . . . very smart.

Burma Coat

STYLE NO. 1114

LIST OF MATERIALS WITH INSTRUCTIONS FOR KNITTING

SIZE 16

BERNAT'S *Burma Coat Yarn*, No. 9642, white, 17 skeins

Knitting Needles: One pair No. 5 needles (Standard)

GAUGE: 5 stitches = 1 inch, 7 rows = 1 inch

COAT

PATTERN: Stockinette stitch.

BACK: Cast on 115 sts. Dec. 1 st. each side every 2 inches 10 times. Work 1 inch even, and shape armholes by casting off at beg. of every row as follows: 6 sts., 6 sts., 2 sts. 4 times, then 1 st. 10 times (15 sts. off each side). Work even until armhole measures 7 inches measured straight from first cast off, and slant shoulders by casting off at beg. of every row as follows: 3 sts. 4 times, and 2 sts. 12 times. Then cast off center 13 sts. Continue each 8-st. piece separately and cast off 2 sts. at beg. of every row 4 times.

SLEEVE: Cast on 54 sts. Inc. 1 st. each side every 12th row 5 times, then every 9th row 6 times. Work even until sleeve measures 17 inches, and shape cap by casting off at beg. of every row as follows: 5 sts., 5 sts., 2 sts., 2 sts., then 1 st. at beg. of next 26 rows, then 1 st. each side every 5th row 4 times. Cast off balance. Make other sleeve the same. In assembling, fold three 1¼-inch "darts" inside top of sleeve — 1½ inches deep.

FRONT LEFT: Cast on 70 sts. Dec. 1 st. at underarm edge every 1½ inches 12 times. Work even until front measures same number of rows as back. Shape armhole (at decreased edge) by casting off 6 sts. once, then 2 sts. twice, and 1 st. 5 times. Starting on row of last armhole dec., make dart by K 17, K 3 tog, K balance. Work 3 sts. tog., directly over these, 5 times more, spacing every 6th row. *In the meantime*, when armhole measures 6 inches, cast off 6 sts. at

neck edge and inc. 1 st. at armhole. Dec. 1 st. at neck edge every row 9 times, and inc. at armhole side every other row 5 times more. When armhole measures 7½ inches, slant shoulder by casting off 5 sts. twice and 6 sts. twice. Make other front the same, but make 3 buttonholes, spacing last 1 inch down from neck and first approximately 20 inches up from bottom. Space according to rows on opposite front, by K 2, cast off 5. Cast these 5 back on on return row.

POCKETS: Cast on 28 sts. Work for 5½ inches. Then cast off center 20 sts. Cast these back on on return row. Work for ½ inch and cast off. Finish with s.c. around 4 edges. Work around slit and sew as patch. Make 2. Cast on 23 sts. Work for 3½ inches. Cast off center 15 sts. Cast these back on on return row and work for ¼ inch. Cast off. Finish as above. Make 2.

COLLAR: Cast on 70 sts. K 1 row, inc. 1, P 1 row, inc. 1, K 60, turn, slip 1, P back. Inc. 1 at edge. K 1 row, inc. 1 at edge, P 61, turn, slip 1, K back. P 1 row. K 1 row. Inc. 1, P 1 row. Inc. 1, K 50, turn, slip 1, P back. Inc. 1 at edge, K 1 row. Inc. 1 at edge, P 51, turn, slip 1, K back. P 1 row. K 1 row, inc. 1, P 1 row, inc. 1, K 1 row, P 1 row, K 1 row, inc. 1, P 1 row, inc. 1, K 1 row. Cast off 20 sts. at beg. of next 2 rows. Cast off balance. Work s.c. around outside edge for 2 rows. Work 2 rows s.c. down each front and around coat bottom.

The flower pots which are on pockets are made of suede leather. Ask your dealer about them.

One-Piece Dress of Chantilly

STYLE NO. 1100 (Shown on Cover)

LIST OF MATERIALS WITH INSTRUCTIONS FOR KNITTING

SIZE 16

BERNAT's Chantilly, No. 8981, white, 14 balls

Knitting Needles: one No. 3 circular needle (Standard);
one pair No. 3 straight needles (Standard); one pair No.
1 straight needles (for ruffles).

One 14-inch talon fastener, one bone buckle

GAUGE: $7\frac{1}{2}$ stitches = 1 inch, 11 rows = 1 inch

SKIRT

On circular needle cast on 400 sts. K for $1\frac{1}{2}$ inches. Then P 1 round for hemline. Work 4 inches even. (Always measure from P row.)

Dec. by K tog. the 39th and 40th sts. for 1 round (10 decs.).

At 6 inches, dec. by K tog. the 38th and 39th sts. for 1 round; at 8 inches, dec. by K tog. the 37th and 38th sts. for 1 round; at 10 inches, dec. by K tog. the 36th and 37th sts. for 1 round; at 12 inches, dec. by K tog. the 35th and 36th sts. for 1 round; at 14 inches, dec. by K tog. the 34th and 35th sts. for 1 round; at 16 inches, dec. by K tog. the 33rd and 34th sts. for 1 round.

Now dec. 10 sts. in 1 round every inch 5 times (12 dec. rounds, 280 sts. on needle, skirt measures 21 inches). Continue to dec. 10 sts. every inch 8 times more. Work 1 inch even. Place marker on needle for center front and a marker 50 sts. to either side for side seam.

Keep the 9 sts. at each side of front marker in seed st.

(K 1, P 1, with a K st. over a P st.) and work back and forth on circular needle as if it was a pair in stockinette st. (K 1 row, P 1 row) to leave front open (at marker). After $\frac{1}{2}$ inch, on K row, K 1, P 1, for 9 sts., * inc. in next st., K 2 *, repeat between stars 12 times more, K 6, ** inc. in next st., K 5 **, repeat between double stars 15 times more, K 4, repeat between single stars above 12 times, inc. in next st., K 1, P 1 for 9 sts. (63 sts. each front — 116 sts. back).

Every 10th row, inc. 2 sts. at each underarm, leaving 2-st. rows at centre seam between increases. (Your first inc. will be work 61, inc., K 2, inc., work 112, inc., K 2, inc., work balance.) Repeat this inc. 4 times more (126 sts. back, 68 sts. each front).

When work measures 9 inches from waist (39 inches in all from P line), work 63, cast off 10, work 116, cast off 10, work balance (these are underarm cast-offs). Change to straight needles and work each piece separately. Starting on one front, dec. 1 st. every other row at underarm 5 times. Work even until armhole measures 6 inches, measured straight — hold 9 sts. of seed-st. border on holder. K or P 2 sts. tog. at neck edge every row until 36 sts. are left. Shape shoulders by casting off 10 sts. at a time 3 times, and 6 sts. once (starting at armhole side). Work other shoulder to correspond.

BACK: Pick up the 116 sts. and dec. 1 st. at beg. of next 10 rows. Work even until armhole measures as back, and slant shoulder by casting off 10 sts. at beg. of next 6 rows, then 6 sts. at beg. of next 2 rows. Work across balance of 34 sts. and K 2 tog. every 5 sts. to reduce neck sts. to 28 — hold on holder. Assemble shoulders. Pick up the 9 seed sts. on one front, 19 sts. along curve of neck and the back 28 sts., 18 sts. along other curve, and the 9 sts. of other front (83 sts.). Work for 10 rows in seed st. Cast off.

SLEEVE: Cast on 39 sts. Inc. 1 st. at beg. of every row 58 times. Cast on 5 at beg. of next 2 rows (107 sts.).

Next row: K 31, * K 2 tog. *, repeat between stars 19 times more, K 33 (87 sts.).

Dec. 1 st. at beg. of every row 6 times (81 sts.).

Work 6 rows even and change to seed st. Inc. 1 st. at beg. of every row 10 times. Cast off. This "cuff" turns back with the increased edges sewn tog. and tacked to underseam.

VEST: Cast on 9 sts. Work in stockinette st. sufficient length to reach from waistline to start of neck shaping. Make 2. Sew these to inside of seed-st. border on fronts. Sew in zipper. RUFFLES: Cast on 700 sts. for fronts and neck. Work 7 rows stockinette st. and cast off. Cast on 162 sts. for sleeves and work 7 rows, cast off. Cast on 58 sts. for pockets and work 7 rows, cast off. POCKETS: Cast on 31 sts. Work 18 rows stockinette st. and 7 rows seed st. Make 4. FINISHING: Gather ruffles and sew to garment with K side out. Assemble sleeves, holding the fullness to the top for slight puff.

BELT: Cast on 15 sts. and work in seed st. to desired length, and cast off. Sew to buckle.



STYLE NO. 1103

(Continued from page 10)

MARKER: A bit of colored yarn tied on needle and slipped as a slipped st., every row.

Starting at neck, cast on 68 sts. P the 1st row.

Row 2: K 1, inc., inc., place marker on needle, K 15, marker, inc., inc., K 28, inc., inc., marker, K 15, marker, inc., inc., K 1 (76 sts.).

Row 3: Cast on 4 sts. P (80 sts.).

Row 4: Cast on 4 sts. K, increasing in each of the 2 sts. immediately preceding markers 1 and 3, and immediately after markers 2 and 4 (This inc. of 8 sts. is made every K row and keeps the 2 shoulder sections of 15 sts. even.) (92 sts.).

Row 5: Cast on 4 sts. P (96 sts.).

Row 6: Cast on 4 sts. K (108 sts.).

Row 7: Cast on 4 sts. P (112 sts.).

Row 8: Cast on 4 sts. K (124 sts.).

Row 9: Cast on 20 sts. P (141 sts.).

Row 10: Cast on 20 sts. K (172 sts.).

Do no more casting on, but continue to inc. 8 sts. every K row until you have 268 sts.

Row 35: Inc. 1 st. in each of 15 shoulder sts. each side. (298 sts.). From now on, inc. *only* as follows: * K $1\frac{1}{2}$ inches even. Inc. 20 sts. evenly spaced in 1 row * (318). Repeat between stars 3 times more (378 sts.). Work even on 378 sts. until cape measures 28 inches from back of neck (or to desired length). Work 6 rows of garter st. (K every row) and cast off.

FINISHING: Cover the 10 button molds with s.c. in self material. S.c. 3 rows up and down each front edge. Turn back a $2\frac{1}{2}$ -inch fold on each front to the outside. Baste and press this in place. Work 1 inch of s.c. at neck, working the 1st row through both parts of front fold, thus securing this fold. Crochet a loop for buttonhole in right neck-edge. Sew buttons as pictured — first 5 inches down from top of neck at edge of fold.

STYLE NO. 1099

(Continued from page 18)

Starting on next row, dec. 1 st. at armhole edge every 3rd row 10 more times. Starting on next row, dec. 1st. at front edge every 4th row 7 times, while working even at armhole edge.

Slanting Shoulder and Continuing Neckline: Bind off 3 sts. beg. next 11 rows at armhole edge for shoulder, while decreasing at front edge, 1 st. every other row 3 times, then every row 16 times. Bind off.

FRONT (Right): Work to correspond to left front, being careful to shape the correct edge for underarm edge and slant pockets from opposite side, and making 3 buttonholes as follows: On the 67th row from beginning, bind off 8 sts., 4 sts. from front edge. On the 68th row, cast on 8 sts. directly above those bound off in preceding row. Make 3 buttonholes in all with 38 rows between 2 consecutive buttonholes, the last one being worked while working on second pocket.



SLEEVE: Cast on 57 sts. Work 1 inch even in pattern st. Starting on next row, inc. 1 st. at both sides of every 7th row 24 times. Work until sleeve measures 18 inches (105 sts. on needle).

Bind off 2 sts. beg. next 4 rows. Starting on next row, dec. 1 st. at both sides of every row 10 times, every other row 12 times, then every 3rd row 8 times. Bind off remaining 37 sts., working 2 sts. tog. at both ends of row. Work second sleeve to correspond.

FINISHING: Press each piece separately. Sew seams neatly. Fit sleeves into armholes, having previously made 2 darts at top of sleeve about 2 inches apart. With a belting ribbon about $\frac{5}{8}$ of an inch wide, face all along the front and neck edges on right side of jacket. Start sewing ribbon about 5 inches from side seam at bottom. To make the ribbon take the curve of the front corners, be sure to steam it, stretching the outer edge and holding in the inside edge. Sew 3 large buttons in place.



STYLE NO. 1121— Changing the accessories from the cap beads to the acorn beads adds a new interest to this two-piece dress of BERNAT'S Florelle.

TWO-PIECE DRESS OF FLORELLE

STYLE NO. 1124

(Continued from page 29)

HAT

BERNAT's Florelle, 1 ball

BERNAT's Perle Cotton 10, 1 ball

GAUGE: 8 stitches = 1 inch, 12 rows = 1 inch

PATTERN STITCH: Same as that of blouse.

Starting at bottom, cast on 64 sts. Work 1 row even. Starting on next row, cast on 6 extra sts. beg. next 14 rows, then 8 sts. beg. next 2 rows (164 sts. on needle). Work $\frac{1}{2}$ inch even. Starting on next row, dec. 1 st. at both sides of every 10th row 3 times. Starting on next row, bind off 4 sts. beg. next 22 rows, then 5 sts. beg. next 4 rows (50 sts. left on needle). Work $\frac{1}{4}$ inch even (about 3 rows). Starting on next row, dec. 1 st. at both sides of every 4th row 9 times, then every 2nd row 15 times. Bind off.

FINISHING AND ASSEMBLING: With damp cloth and hot iron, press before assembling. With a piece of stiff organdy, line hat, basting first. With reverse side of hat towards you, sew side seams neatly. Then sew back seam. Thread a large tapestry needle with 4 ends of Perle Cotton and double, then fold along the side seams of hat and whip over it back and forth so as to form a lacing. Make a bow at the back with the Perle Cotton, finishing the ends in a small tassel.

ACCESSORIES

SET A

NECKLACE: 15 chartreuse acorn beads and 13 orange acorn beads. Shetland Floss.

Strand No. 1: Cut 4 ends of yarn, each about $3\frac{3}{4}$ yards long, thread tapestry needle with these 4 ends, then double. About $\frac{3}{4}$ inch from end, make a knot, thread 1 chartreuse acorn, make another knot. About 10 inches from there, make another knot (this will form a tie), thread a chartreuse acorn, then make 2 knots, one after the other, all your strands of yarn firmly tog. to make neat knots. Continue until you have threaded 14 chartreuse acorns consecutively with 2 knots between. Knot about 10 inches from last one to form other tie, thread an orange acorn, knot and cut wool at both ends to form a tassel.

Strand No. 2: Cut 4 ends of yarn each about $2\frac{1}{4}$ yards long, thread tapestry needle, then double. Thread 12 orange acorns with knots between without leaving any tie ends to this one. Sew very neatly the knot at each end of this strand to strand No. 1.

BELT 14 chartreuse acorn beads and 14 orange acorn beads.

Make 2 strands exactly like strand No. 1 of necklace, only cut your yarn on 4 yards length so as to make the ties about 14 inches in length instead of about 11 inches. Thread all 14 chartreuse acorns on one, and all 14 orange

acorns on the other one. Run one through the other at center, then double, knot the 2 ties of the chartreuse strand tog.; do likewise for the other.

BRACELET: 12 acorns of either color.

Make 1 strand same as strand No. 2 of necklace, threading 12 acorns of either color. Sew small spring ring and wear it twisted double.

SET C

BELT: 66 cap beads.

Strand No. 1: Cut 4 strands, each a little more than $4\frac{1}{2}$ yards long, thread tapestry needle and double. About 1 inch from end, make 1 knot. Run needle through the small end of cap, then through larger end of another cap so as to form an egg shape, make a knot very tightly against other end of cap, thread 4 more caps in same manner so as to form 3 eggs all tog., and make a knot after last one. About 13 inches from this knot, * make another knot, then, $2\frac{1}{2}$ inches from this one, make another knot, always holding all the ends of yarn tightly tog. so as to form a neat knot. Thread 6 caps with knots between as previously, forming 3 eggs *. Repeat between stars 3 more times, ending with another $2\frac{1}{2}$ -inch space, then knot and form other tie to match first one, with the 3 eggs at the end.

Strand No. 2: Cut 4 strands, each $2\frac{1}{2}$ yards long, thread tapestry needle, * make a knot about 1 inch from edge, thread caps so as to form 3 eggs, and leave a $2\frac{1}{2}$ -inch space *. Repeat between stars 3 more times, ending with 3 eggs, then a knot. In this strand you will have 5 sections of 3 eggs each. Sew knots at each end of this strand to strand No. 1 in such a way that each section of eggs will alternate.

NECKLACE: 26 cap beads.

Cut 4 strands of yarn each about 3 yards long. Thread tapestry needle and double. About 1 inch from end, make a knot, then thread one cap, having the larger end facing down, knot right above. Then knot about 11 inches from this one so as to form tie, thread caps so as to form 12 eggs, using 24 caps with a tight knot between each. Form a tie at the other end to match first one.

BRACELET: 16 caps.

Strand No. 1: Cut 4 strands, each about 1 yard long, thread tapestry needle and double. Make 1 knot close to end of strand, then another one about $\frac{3}{4}$ inch from there. Thread 4 caps, forming 2 eggs with knots between, leave a space about $1\frac{1}{2}$ inches, then thread 4 more caps to form 2 eggs, and finish as you started.

Strand No. 2: Cut same length of yarn as for strand No. 1, knot close to end of strand. Thread 2 caps, forming 1 egg, leave space about $1\frac{1}{4}$ inches, thread 4 caps to form 2 eggs and repeat, leave another space about $1\frac{1}{4}$ inches, and end with 1 egg as you started. Sew the 2 strands tog. and sew clasp to close.

For information regarding bead trim on this dress, see your dealer.

Twin Sweater of Glendown Heather

STYLE NO. 184

LIST OF MATERIALS WITH INSTRUCTIONS FOR KNITTING

SIZE 16

BERNAT's Glendown, No. 7115, beige, 8 balls

BERNAT's Glendown, No. 7138, oxblood, 6 balls

Knitting Needles: One pair No. 2 straight needles (Standard); one No. 2 circular needle (Standard); one set No. 14 sock needles (Standard)

Gauge: $8\frac{1}{2}$ stitches=1 inch, 12 rows=1 inch

CARDIGAN

Beige

BACK: On No. 2 needles, cast on 128 sts. Work in ribbing of * K3, P2 *. Inc. 1 st. each side every 2 inches 5 times. K even until piece measures $15\frac{1}{2}$ inches and shape armhole by casting off 8 sts. at beg. of next 2 rows, then 1 st. at beg. of next 10 rows (112 sts.). K even until piece measures 23 inches and slant shoulders by casting off 6 sts. at beg. of next 12 rows. Cast off last 40 sts.

LEFT FRONT: Cast on 65 sts. Work in rib of * K3, P2 *. Inc. 1 st. at underarm edge every 2 inches 4 times. *In the meantime*, when piece measures 5 inches, cast off 45 sts. — 10 sts. from underarm edge. On separate needles cast on 45 sts. and work in ribbing of K3, P2 (to match 45 sts. cast off) for 5 inches. K these sts. into place where 45 were cast off. After 4 ins. at side are completed, inc. 1 st. this same side every 1 inch 4 times (12 inches — 73 sts.). Work even until piece measures $13\frac{1}{2}$ inches, and start neck shaping by K 2 sts. tog. at neck edge 1 st. from edge, every 6th row, 20 times. *In the meantime*, start armhole when piece measures as back (15 inches, same number of rows). Cast off at beg. of every armhole side row 8 sts., 2 sts., 2 sts., then 1 st. 5 times. Work even this edge, still continuing neck decs., and slant shoulder when armhole measures as back by casting off 6 sts. at beg. of every armhole edge row. Make other front to correspond.

Edging for fronts and neck and tops of pockets done in double knitting. Cast on 24 sts. Slip first st., * yarn forward, slip 1 st. purlways, K 1 *. Repeat between stars to end of row. Repeat this row for $\frac{1}{2}$ inch and make buttonhole by working 6 sts. Cast off next 12, knitting 2 tog. as you cast off. Work last 6, cast on 6 over the 12 cast off on return row. On next row, inc. in each of the 6 sts. cast on and continue in double knitting. Space similar buttonholes $2\frac{1}{2}$ inches apart until you have 6 in all ($\frac{1}{2}$ inch before turn of neck). Continue in double knitting until piece is sufficient length for edge of sweater.

For pocket tops, work 2 pieces on 20 sts. in double knitting.

SLEEVES: Cast on 64 sts. K 1, P 1, ribbing on No. 14 sock needles and work for 5 inches. Change to No. 2 needles and inc. 12 sts. equally spaced. Start with rib of K3, P2. Inc. 1 st. each side every $\frac{1}{2}$ inch 22 times (120 sts.). K even until sleeve measures 19 inches and, work facing you, shape cap by casting off at beg. of every row as follows: 8 sts., 8 sts., 1 st., 2 sts., 1 st., 2 sts., then 1 st. at beg. of next 20 rows, then 2 sts. at beg. of next 28 rows. Cast off remaining sts. Make other sleeve to correspond, but reverse 2-st. cast off to opposite side of sleeve.

PULLOVER

Oxblood

On No. 14 sock needles, cast on 305 sts. Work in rib of K1, P1, for 4 inches. Change to No. 2 circular needle and work balance of sweater in rib of K3, P2. When piece measures 14 inches to underarm, hold front 170 sts. on holder and continue on balance of 135 sts. for back. Cast off at beg. of every row as follows for armhole: 8 sts., 8 sts., then 1 st. 12 times. Work even until armhole measures $6\frac{1}{2}$ inches. Slant shoulder by casting off 8 sts. at beg. of next 8 rows. Hold balance of sts. on holder. Pick up front 170 sts. and cast off at beg. of every row as follows: 8 sts., 8 sts., 2 sts. 8 times, 1 st. 16 times, then separate work on 2 needles. Work even at armhole edge, but dec. at neck edge by knitting 2 sts. tog. 1 st. from edge, every other row, 29 times. When armhole measures $6\frac{1}{2}$ inches, slant shoulder as at back. Work other shoulder the same. Assemble shoulders.

On No. 14 sock needles, pick up back sts. from holder and sufficient to reach around V neck and work in rib of K1, P1, for $\frac{1}{2}$ inch. K3 tog. at point of V every other row. With lighter colored yarn used in cardigan, cast on 3 sts. P 1st row. Work in stockinette st. and inc. 1 st. on each side of center st. every K row until you have 33 sts. on needle. Cast off center st. and work on each 16 sts. separately until each piece measures sufficient length to reach from point of V (2 inches below K1, P1, rib) to center back. Sew neatly to sweater and kitchener st., tog. at back, or cast off and sew neatly.

SLEEVES: Cast on 85 sts. on No. 14 sock needles (using just 2) and K back and forth in K1, P1, rib for 1 inch. Change to No. 2 needles. Inc. 1 st. each side every $\frac{1}{4}$ inch 16 times. Shape cap by casting off 8 sts. at beg. of next 2 rows, then at beg. of following rows: 2 sts., 1 st., 2 sts., 1 st., 2 sts., 1 st., 2 sts., 1 st., then 1 st. at beg. of next 18 rows, then 2 sts. at beg. of next 28 rows. Cast off balance. Sew in sleeves. Two-st. cast off is front of sleeve. Reverse cap shaping on second sleeve.



STYLE NO. 181—A pair of thoroughbreds! The slip-on sweater is knit of BERNAT'S Glendown Heather in ox-blood. The cardigan is of the same yarn but in beige, which also trims the neck of the pull-over.

SHIRRED CHANTILLY ONE-PIECE DRESS

STYLE NO. 1111

(Continued from page 26)

same pattern as yoke on back of bodice, work 3½ inches even at both edges (about 39 rows).

Slanting Shoulder and Shaping Neckline: Bind off 3 sts. beg. next 6 rows at armhole side, then 2 sts. beg. next 5 rows at same side for shoulder while shaping neckline by binding off 3 sts. 4 times at front edge, then decreasing 1 st. at same edge every other row 7 times. Bind off remaining sts. Take the 48 sts. from st. holder and work other half to correspond.

SLEEVE: Using No. 1 straight needles, cast on 60 sts. Work 2 rows even in stockinette st. Then work 2 puffs and 1 stripe even. On the 2nd K row of the next stripe, inc. 1 st. in every 4th st. across (15 incs.). Work 1 puff even. On the 2nd K row of the next stripe, inc. 1 st. in every 5th st. across (15 incs.). Work even until you have completed the 4th puff from beg. (90 sts. on needle). Bind off 3 sts. beg. each row in the next stripe (12 sts. bound off, that is 6 sts. at each side). * Work 1 puff even. On the 2nd K row of next stripe, K tog. every 5th and 6th sts. (13 decs.). * Repeat between stars twice more, having 1 st. less between the decs. each time. Work 1 puff even. On next row, K tog. every 12th and 13th sts. (3 decs.). Bind off remaining 36 sts., working 2 sts. tog. twice at both ends. Work second sleeve to correspond.

FINISHING AND ASSEMBLING: The blocking on this dress is very important, since it must be pressed such a way to retain the shirred effect. Consequently, do not let the weight of the iron rest on the fabric, yet let the steam penetrate thoroughly. The work must be pulled toward the length. Sew shoulder and sleeve seams neatly. Fit sleeves into armholes, matching the puffs and holding in the extra fullness in sleeves towards the top. Sew bodice to top of skirt. Then make a small casing on reverse side of the 1 inch in stockinette st., making the casing in the center of this plain band to run a very narrow round elastic through. Then make 1 row s.c. at bottom of sleeves, front opening and neck edges.

BELT AND LACING: With ½ yard of 40-inch crêpe, make a bias girdle about 8 inches wide, after being folded double. Also make 2 pieces of bias tubing, one about 34 inches long which will be used to overcast around the edge of neck, tying the ends into a bow. The other piece about 13 inches long to overcast along the edges of opening. To overcast edges with this binding, just pull through the knitted fabric with a very small safety pin. A small padding can be made with the same crêpe if padding is desired for shoulders.

TWO-PIECE DRESS OF SNOWFLAKE

STYLE NO. 1112

(Continued from page 34)

Row 6: Cast off 2, work to center pattern and P 5, K 19, P 5, * K 3, P 3 * for balance of row.

Row 7: Cast off 1, work ribbing for 40 sts., P 13, K 9, P 13, * K 3, P 3 * for balance of sts.

Row 8: Cast off 1, work ribbing for 40 sts., K 13, P 9, K 13, * P 3, K 3 * for balance of sts.

Row 9: Cast off 1, work ribbing for 39 sts., P 13, K 9, P 13, * K 3, P 3 * for balance of sts.

Row 10: Cast off 1, work ribbing for 39 sts., K 13, P 9, K 13, * P 3, K 3 * for balance of sts. (113 sts. on needle — armhole decreases are completed).

Repeat rows 9 and 10 without cast-offs. Work 6 rows with center 41 sts. in stockinette (face of work) each side in ribbing. Work next 6 rows with center 19 sts. in reverse side of stockinette st., ribbing both sides. Work next 6 rows with center 41 sts. in stockinette. Work next 6 rows with center 59 sts. in stockinette, and 18 sts. on either side of these 59 in reverse stockinette. Work 6 rows with center 101 in stockinette.

Next row: Work 6 sts. in ribbing, P 6, K 6, P 18, K 12, cast off 17, K 12, P 18, K 6, P 6, work last 6 sts. in ribbing.

RIGHT SHOULDER AND NECK: Continue on these 48 sts., holding pattern as in last row for 5 more rows. (Dec. 1 st. at neck edge every other row 16 times). *In the meantime*, next 6 rows, work all but armhole edge 6 sts. in stockinette. Next 6 rows, work armhole edge 6 sts. in ribbing, 6 in reverse stockinette, and 6 in stockinette, balance in reverse. Work next 6 rows in stockinette except edge 6 sts., which are ribbed. Work next 6 rows in reversed stockinette except edge 6 sts. Repeat these last 12 rows until armhole measures 6½ inches, and cast off shoulder 8 sts. at a time. Make other front the same.

BACK: Cast on 120 sts. K 3, P 3, ribbing throughout. Dec. 1 st. each side every ½ inch 7 times, then K 2 inches even. Inc. 1 st. each side every ½ inch 11 times. When piece measures same number of rows to underarm as front, cast off for armhole at beg. of every row as follows: 4 sts., 4 sts., then 1 st. 10 times. Work even until piece measures 6½ inches from first armhole cast off, and slant shoulder by casting off 8 sts. at beg. of next 8 rows. Cast off balance.

SLEEVES: Cast on 78 sts. K 3, P 3, ribbing. Inc. 1 st. each side every ½ inch 7 times. Shape cap by casting off at beg. of every row as follows: 9 sts., 4 sts., 2 sts., 1 st., 2 sts., 1 st., then 1 st. at beg. of every row until cap measures 4 inches, measured straight. Cast off balance. (9-st. cast off is front of sleeve.) Make other sleeve, reversing cap.

COLLAR: Cast on 123 sts. K 3, P 3, ribbing. Inc. 1 st. each side every 3rd row until piece measures 2½ inches, and cast off.

TWO-PIECE SUIT OF FANTASIE AND MANCHU WITH STRIPED BLOUSE

STYLE NO. 1108

(Continued from page 37)

completing buttonholes. Cast off after completing 15th stripe.

SLEEVE: Pattern stitch: *1st row:* P across. *2nd row:* K across, inserting needle in through back of st. instead of front, thus twisting sts. These 2 rows complete the pattern st. The sleeves are entirely worked in pattern, the purled side of work being the right side of sleeves.

Using No. 2 needles and 1 end of the turquoise Fantasie yarn, cast on 58 sts. Work 1½ inches even in pattern st. Starting on next row, inc. 1 st. at both sides of every 7th row 23 times (104 sts.). Work 1 inch even, or to desired underarm length. Bind off 3 sts. beg. next 4 rows. Starting on next row, dec. 1 st. at both sides of every row 10 times, every other row 15 times, then every 3rd row 6 times. Bind off remaining 30 sts., working 2 sts. tog. at both ends. Work second sleeve to correspond.

TOP POCKET: Using 3 ends of the colored yarns and No. 3 needles, cast on 22 sts. Then work in pattern st. but, for the first colored stripe after cast-on, K 2 rows instead of 4 rows, shaping as follows: Work 4 rows even (this includes the first colored stripe). Starting on next row, dec. 1 st. at beg. of every other row until 2 sts. remain. Bind off.

LOWER POCKET: Using 3 ends of the colored yarns and No. 3 needles, cast on 26 sts. Work same as top pocket, but dec. at the end of every other row instead of at the beg.

NECK BAND: Using 3 ends of the colored yarns and No. 3 needles, cast on 117 sts. Working in pattern st., shape as follows: Work 4 rows even. Starting on next row, K 2 tog. 15 sts. from beg. of row and 15 sts. from end of row every other row 4 times.

12th row: K 35 sts., then K tog. the next 6th and 7th sts. 6 times. K to end of row. Bind off.

FINISHING AND ASSEMBLING: Press each piece separately. Sew seams neatly. Make 2 darts at the inside top of each sleeve, tapering to nothing from one half inch at edge, and about 2 inches apart. Fit sleeves into armholes. Fit neck-band around neck and sew neatly. About 6 inches from bottom of jacket, using a large darning needle, run a double end of the brown yarn through the edge of each stripe, drawing slightly in order to nip in the waist, drawing as will be required to fit your waist. Sew smaller pocket about 2½ inches from front edge at armhole level on left front. Sew lower pocket about 2½ inches from front edge, the point being about 2 inches from bottom on right front. Sew 6 buttons in place and sew 2 very small snaps to close neckband. Line front edges with ribbon for button and buttonhole bands.



[Vintage Patterns Dazespast](#) (re-mastered eBooks)

[Dazespast](#)

Original Vintage Knitting Crochet, Sewing & Needle Art Patterns and Books
eBay Store: mooreruby817

Free Vintage Patterns for Everyone
[Livin a Vintage Lifestyle and Lovin It](#) (Facebook)

[Follow Us on Pinterest](#) or the [Vintage Patterns Blog](#)

Email: ruby@dazespast
315.543.9189/Fax same