

Huntsville

No. 117

(Chart on page 36)

SPANISH WORSTED AND FEATHERDOWN CARDIGAN

Size 40

1 Pr. No. 3 M. M. Needles—14 inch
—for body of cardigan

Scale: 6 sts. to 1 inch
8 rows to 1 inch

1 Pr. No. 1 Steel Needles—12 inch
—for sleeves and bindings

Scale: 8 sts. to 1 inch
11 rows to 1 inch

MINERVA SPANISH WORSTED

Black Sheep No. 278..... 10 Balls

MINERVA FEATHERDOWN

Natural No. 1066..... 5 Balls

The body of the cardigan is worked
in pattern using 1 strand of Black
Sheep and 1 strand of Natural. The



Worked with two strands of yarn except in the sleeves, where one strand is used. This easy pattern stitch gives a tweed effect. A sweater which he'll really wear—really like.

sleeves, pocket bindings and front binding are worked in Stockinette St. using Black Sheep.

PATTERN: Multiple of 2 sts.

Row 1—* K. 1, P. 1, repeat from * across row.

Row 2—P.

Row 3—* P. 1, K. 1, repeat from * across row.

Row 4—P.

Repeat these 4 rows for pattern.

Follow chart for Left Front and 2 Pocket Facings. Pocket opening is 24 sts. wide and 18 sts. from side

edge. To work knit-in pockets, see page 45.

Work Right Front to correspond. Follow charts for Back and Sleeves.

On sleeves, 1 inch from start, K. 1 row on wrong side of work for turn of hem.

Cast on 10 sts. and make—
2—4 inch Pocket Bindings.
1—55 inch Front Binding.

Finishing, see page 45. Turn up hem at bottom of sleeves. Fold bindings in half and sew in place as illustrated. Sew 20 inch separating slide fastener in front opening.



The Revere
AFGHAN

All furniture photographed in
this book by courtesy of W. and
J. Sloane & Co., New York City



Revere Afghan (No. 121)

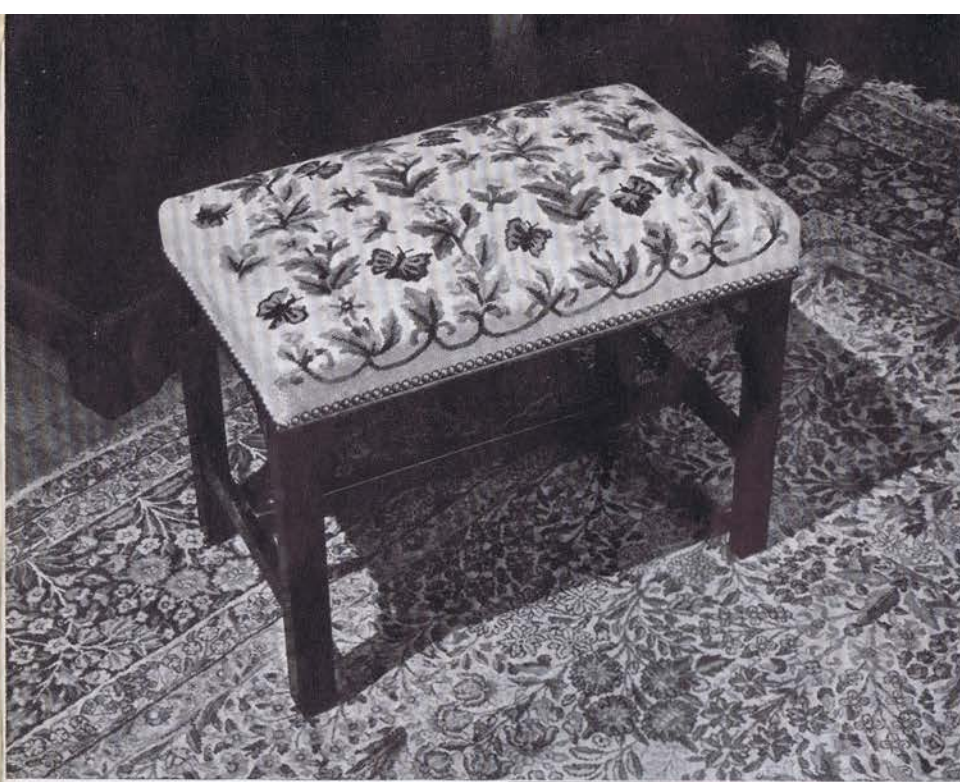
Made of Minerva Germantown Yarn. Just as much in vogue now as in Grandmother's day. The medallions are crocheted individually and joined together with S. C. (*Instructions on page 43*)

NEEDLEPOINT

**Old Fashioned Flowers Chair Back—
Minerva Louis XVI Design No. 31**
Design 25 $\frac{3}{4}$ " x 21". Chair seat Design No. 43. Design 21" x 21". The
exquisite charm of the Louis XVI period is beautifully represented in
this design. Graceful pastel flower sprays lay over the delicate back-
ground. All reminiscent of the exquisite settings of the Tuileries, sedan
chairs, gallant courtiers with powdered wigs and lace at their wrists.



And the pattern is also perfect in an Early
American dining room or bedroom. It also fits
in beautifully for footstools, pillows or dressing
table tops.



**Wild Flowers—Minerva Wild Flower Bench
Design No. 14**

Design 24" x 18". Wild flowers and butterflies in lovely Blues, Greens, Pinks and Golds against the Cream background. Equally suitable for a living room or a dressing table bench.



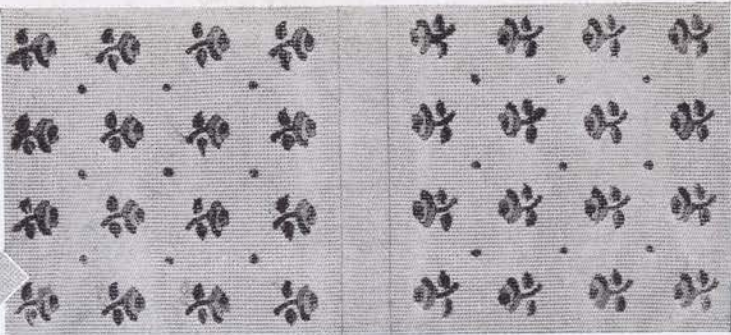
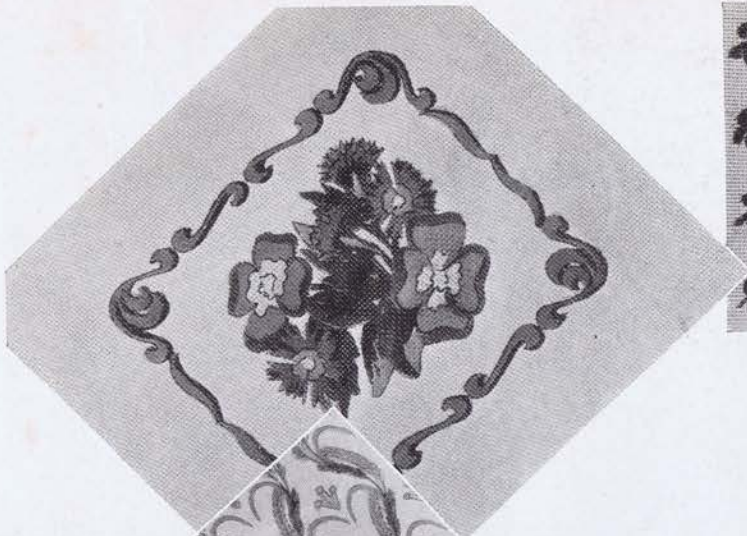
**Return of the Clipper Ship Sampler—Minerva Colonial Design
No. 117**

Design 22" x 26". This great period of American history can now flash back again on your wall, bringing the tang of the sea, spices from India, men with high hats, ladies with bonnets . . .

Chinese Chippendale Chair Seat—Minerva Chinese Chippendale Design No. 44

Design 25½" x 21". The elegance and faultless proportion of the Chippendale designs are brilliantly reproduced in this Chinese motif.





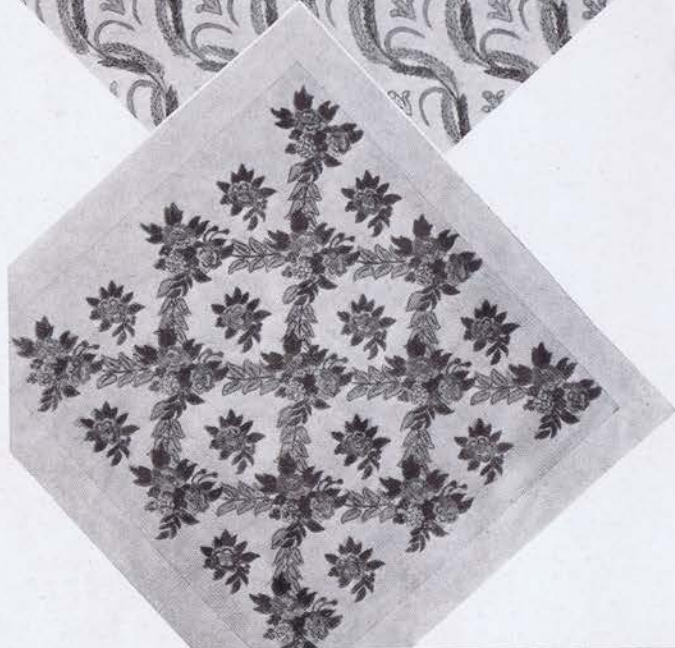
Petite Rose—Minerva Louis XVI Design No. 500

This handkerchief case or bag is exquisite in its daintiness, and the subdued blue background contrasts softly with the lovely rose shades in the tiny rosebuds. It's small enough to be carried in your handbag to work on in odd moments. The design size is 7" x 7" and it is made on Plymouth Canvas.



Madame Recamier—Minerva French Empire Design No. 70

The decorative charm of this design is reminiscent of the magnificent extravagances in the days of the glamorous Madame Recamier for whom this piece is named. She will be recalled as Madame Jeanne Julie Recamier, noted French society leader, exiled by Napoleon, and famous for her beauty and wit. As footstool or pillow it is a delightful addition to a period room of Victorian or French Empire feeling. The design size is 15" x 13½"; the canvas size 18" x 16½". It is made on Mt. Vernon Canvas.



Feather and Wheat—Minerva Hepplewhite Design No. 51

This chair seat combining the Prince of Wales feathers and the blade of wheat has all the dignity, grace and daintiness of that period. It is hand stenciled in color on Plymouth Canvas. The design size is 24" x 24"; the canvas size 27" x 27".

English Rose—Minerva Hepplewhite Design No. 50

This charming design is conservative in its adherence to traditional design—yet it is modern in its subtle blending of color. Our choice of background color is Gold Tint with leaves of Chippendale Yellow, which imparts a rich quality to the finished piece. However, this combination may be varied in accordance with any interior. This exquisite design with its classic feeling is particularly suited for your favorite Queen Anne, Chippendale, Sheraton or Hepplewhite chairs. The design size is 27" x 25"; the canvas size 32" x 30". It is made on Mt. Vernon Canvas.

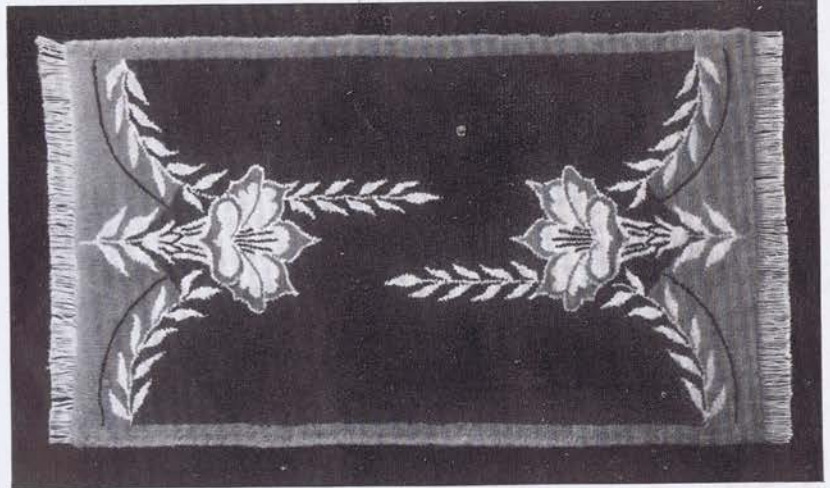
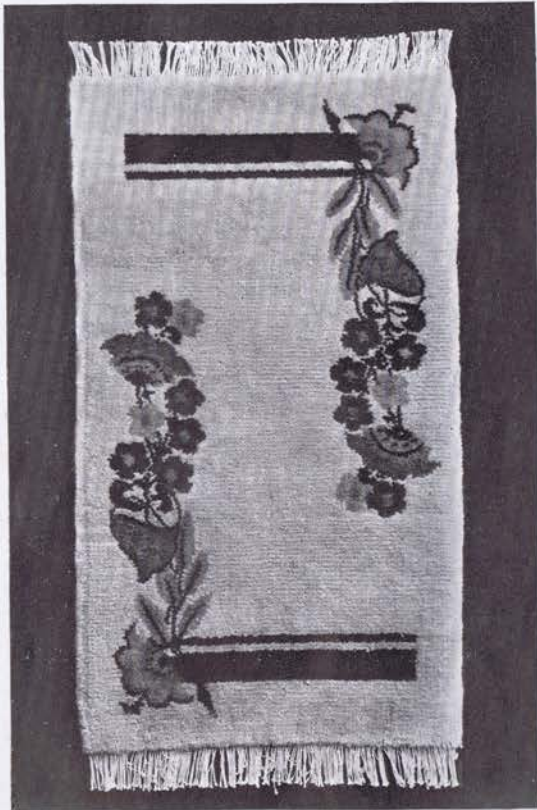


**English Garden—
Minerva Queen Anne Design No. 15**

The name English Garden is quite appropriate for this design with its formal floral design and lovely, soft, rich coloring. The design size is 16" x 40", the canvas size 19" x 43". It is made on Mt. Vernon Canvas.

*(Additional Needlepoint on
page 44)*

RUGS

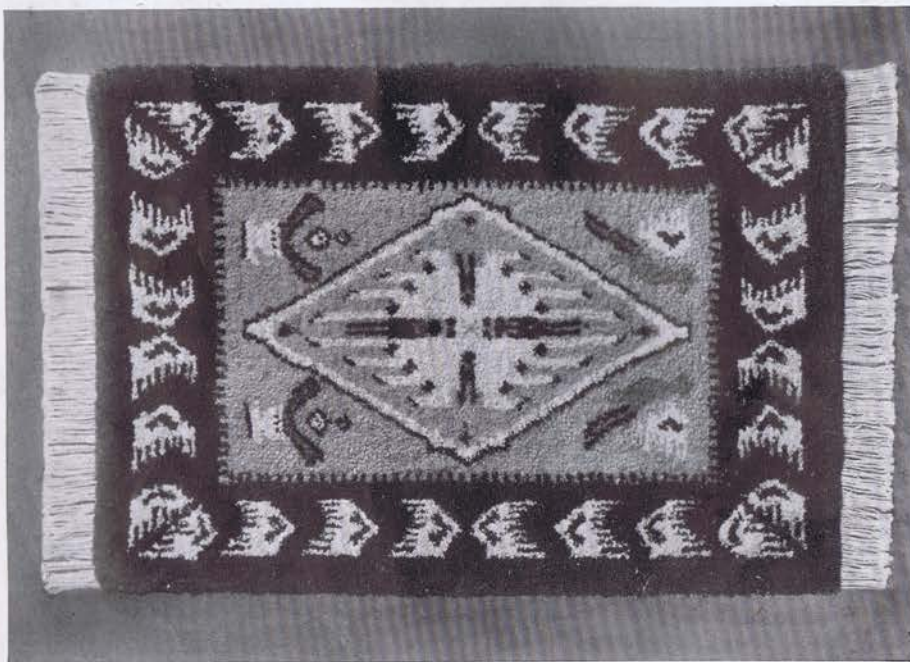


Modern Floral Design No. 718

The elegant simplicity of this conventional lily design is enhanced by the very modern color scheme used—Fresco Red, Silver and White. Made of Homecraft Rug Yarn. The size is 26" x 46".

The Carlyle Design No. 719

This conventional floral rug is very gay in color. The background is Bisque accented by the bands of two shades of Brown at each end. Made of Homecraft Rug Yarn. The size is 22" x 40".



The Finland Design No. 510

The Finns are renowned for their skill in handicraft, and their designs are unique. Here is a most unusual and charming representation of their art with all the Scandinavian charm. It is made in Minerva Silver Mixes and the pattern is stamped on Minerva Warp Cloth—woven to our specifications to insure long years of service. The size is 20" x 28½".

Modern Floral Design No. 717

A modern version of the ever popular floral oval. The soft Rust and Green shades used in this design are complemented by the Bone White background. It is made with Minerva Homecraft Rug Yarn—a heavy yarn of fine luxurious texture. The size is 20" x 36".



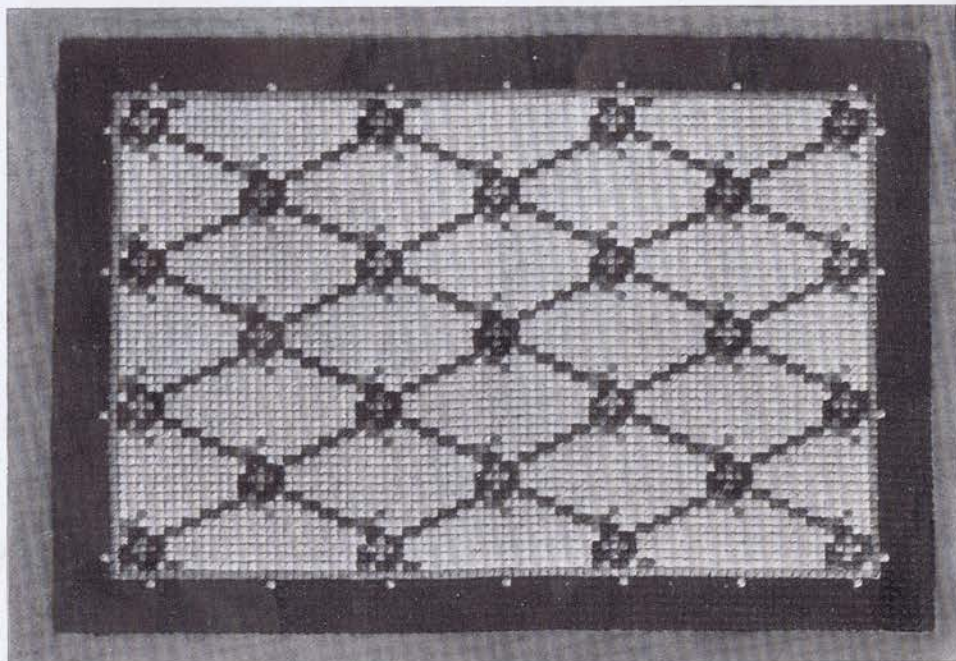
Springtime Design No. 714

Tulips worked in shades of Gold, Purple and Rose give a charming suggestion of the Netherlands. Made in Minerva Homecraft Rug Yarn. The size is 20" x 40".



The Trellis Design No. 350

Cross Stitch on Smyrna makes this very quaint rug. Easily and quickly made, and also very durable. Worked with Homecraft Rug Yarn in colors that will harmonize with any surroundings. And just as simple as the cross stitch which everybody knows. The size is 19" x 29".





The Dahlia

(No. 118)

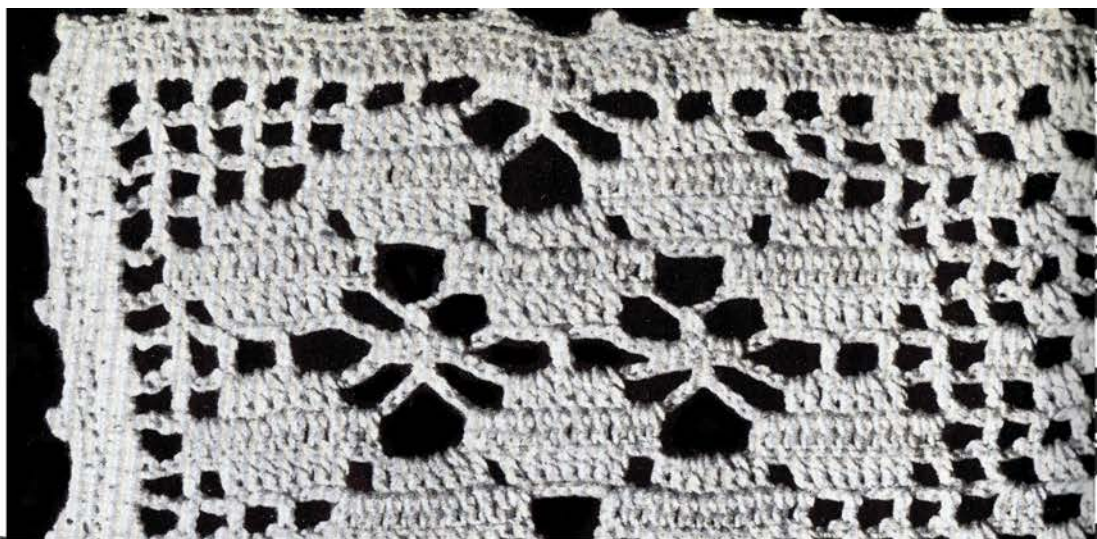
The Dahlia, crocheted of Minerva's Natural Mellosheen—our new super-quality mercerized cotton yarn. The very lovely Dahlia floral medallions are made individually and then joined. The design is new and easy to make. (*Instructions on page 40*)

Wild Rose

Five-Piece Luncheon Set (No. 119)

A classic in stately simplicity. This variation of Filet Crochet is a copy of a very old Continental design. We have reproduced it in Minerva's Natural Mellosheen. It is easy to make and requires a minimum amount of time. Scarf is about 16" x 40". Place Mats about 10" x 16".

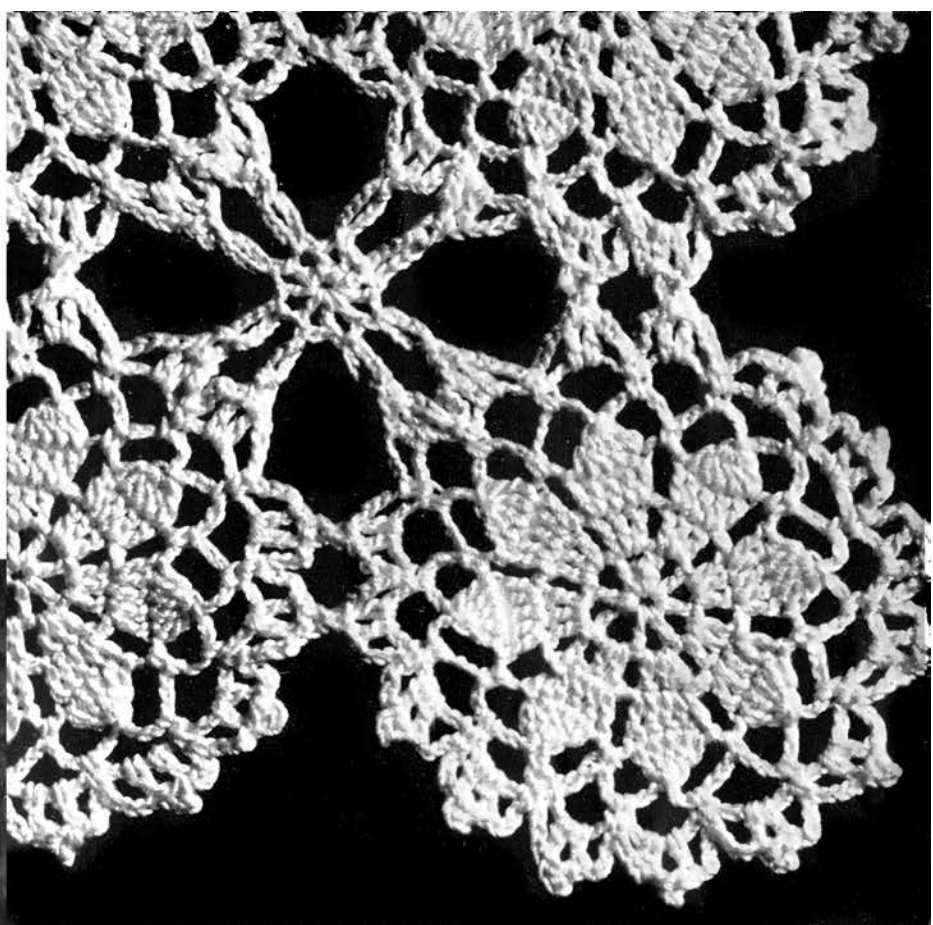
(Instruction on pages 40 and 41)

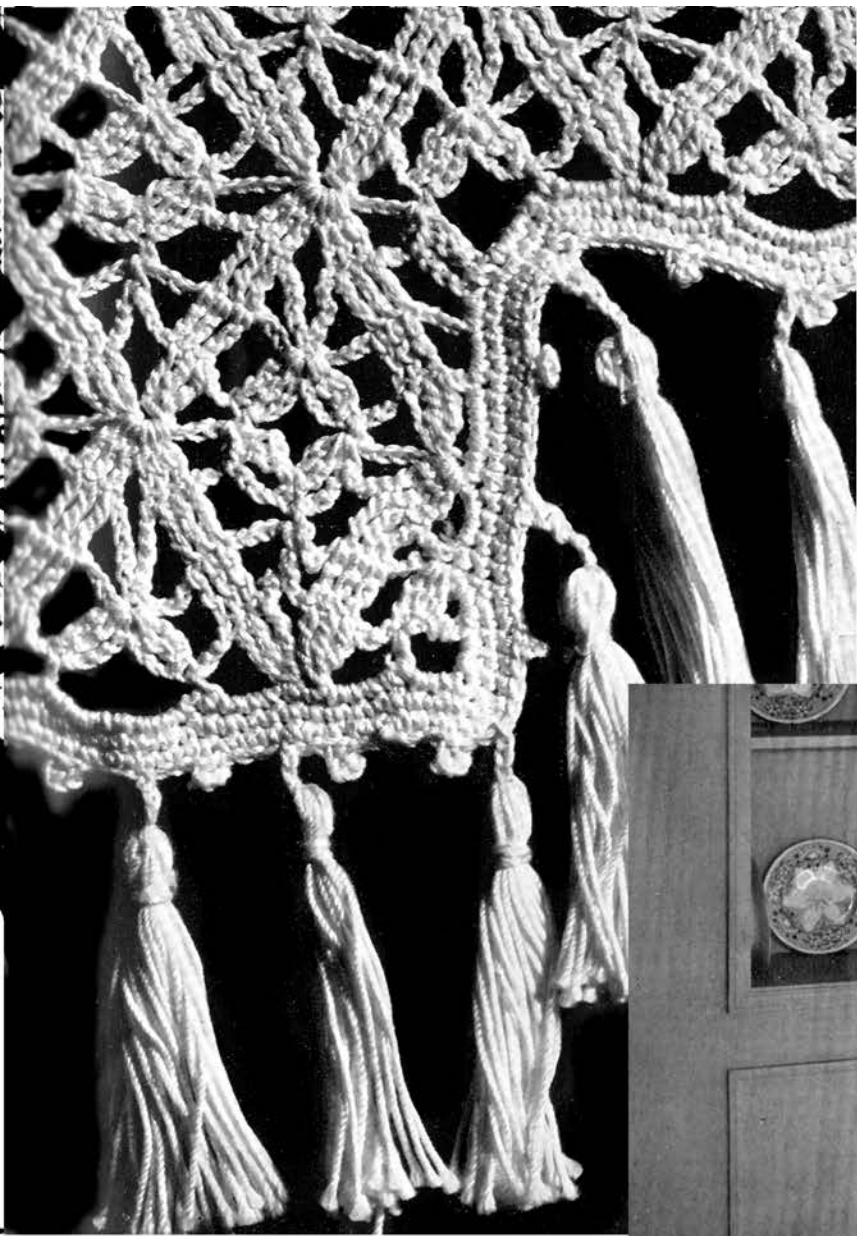


The Primrose

(No. 120)

An exquisite table cover suitable for formal or informal use. It is crocheted of Minerva's new White Mellosheen. This name means soft and lustrous, which is exactly what this new Minerva super-quality cotton yarn is. Your time is well spent when using Mellosheen and you will have an heirloom of great beauty, and one that is priceless because you made it. It can be made any desired size for the Primrose medallions are individually made and then joined. (*Instructions on pages 41 and 42*)





(No. 122)

Three-piece chair set shows a very unusual allover design. It is very different, yet easy to make. Its richness is enhanced by the simple border and tassel trim. Designed to be used on the type of chair illustrated, which is a copy of a Metropolitan Museum piece, or on the overstuffed or Club Chair. Minerva Mellosheen in Natural or White as preferred. (Instructions on page 42)

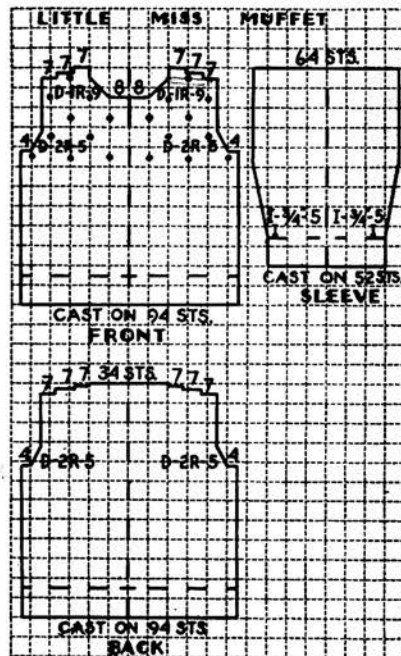
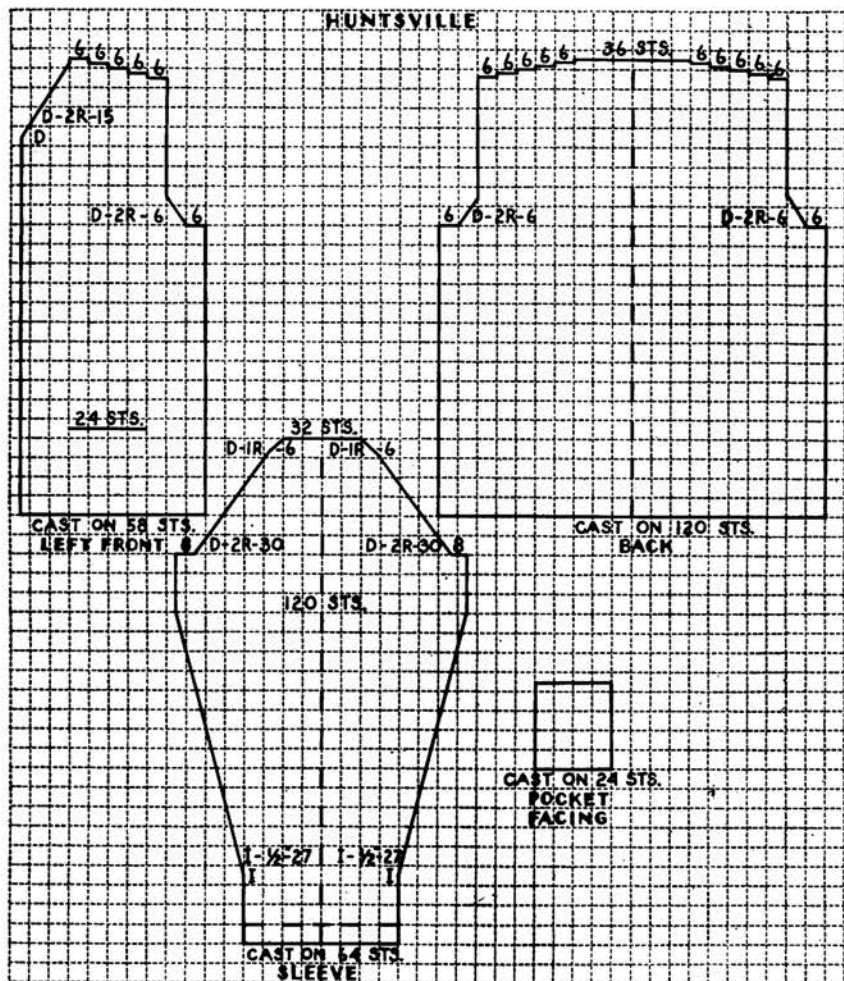


The Dorchester

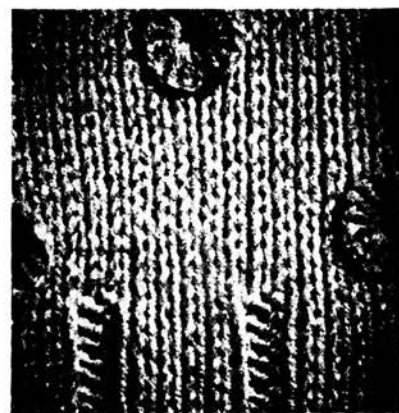


HUNTSVILLE CHART

(Huntsville Sweater illustrated on page 25)



LITTLE MISS MUFFET SWATCH
(Illustration on page 20)



BO-PEEP SWATCH
(Illustration, chart and instructions on pages 20 and 21)



LITTLE MISS MUFFET No. 109 (Illustrated on page 20)

THREE-FOLD SAXONY SLIP-OVER

Size 4

- 1 Pr. No. 2½ M. M. Needles—10 inch
- Scale: 8½ sts. to 1 inch
10 rows to 1 inch
- 1 No. 5 Steel Crochet Hook
- 1 Tapestry Needle

MINERVA THREE-FOLD SAXONY
Sweater—

- Canary No. 237..... 4 Balls
- Trim—
- Special Baby Blue No. 248.... 1 Ball

Total 5 Balls

Follow chart for Front, working first 1½ inches in K. 1, P. 1, ribbing. Then work as follows:

Row 1—K. 19, P. 2, K. 5, P. 2, K. 5, P. 2, K. 24, P. 2, K. 5, P. 2, K. 5, P. 2, K. 19.

Row 2—P. 19, K. 2, P. 5, K. 2, P. 5, K. 2, P. 24, K. 2, P. 5, K. 2, P. 5, K. 2, P. 19.

Continue in this manner to within ½ inch of underarm, then work in Stockinette St. For 1½ inch neck opening, divide sts. in half at point indicated on chart.

Work Back in same manner as front, following chart.

Follow chart for Sleeves, working first 1½ inches in ribbing.

Cast on 10 sts. for Scarf and work in Stockinette St. for 24 inches. Bind off.

Finishing, see page 45. Work 1 row S. C. around edge of scarf and sew to neck edge.

Work Blue circles in Buttonhole St. as illustrated and indicated on chart.

Goldilocks

No. 111

(Illustrated on page 21)

SCOTCH SPORTS YARN COAT AND HAT

Size 6

1 Pr. No. 4 M. M. Needles—14 inch
Scale: 5½ sts. to 1 inch
10 rows to 1 inch

MINERVA SCOTCH SPORTS YARN
Coat—Canary No. 727..... 4 Skeins
Hat —Canary No. 727..... 1 Skein

Total 5 Skeins

COAT: Follow chart for Right Front and work in Moss St. for 24 rows, decreasing on 22nd row at side edge, then start pattern as follows: (M—Moss St.)

Row 25—K. 1, P. 1, for 12 sts., K. 1. M. 41.

Row 26—M. 40, P. 2, M. 12.

Row 27—M. 12, K. 3, M. 39.

Row 28—M. 38, P. 3, M. 13.

Row 29—M. 14, K. 3, M. 37.

Row 30—M. 36, P. 3, M. 15.

Row 31—M. 16, K. 3, M. 35.

Row 32—Work 2 sts. tog. (second decrease), M. 32, P. 3, M. 17.

Row 33—M. 18, K. 3, M. 32.

Row 34—M. 31, P. 3, M. 19.

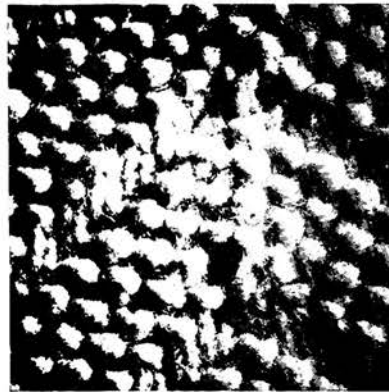
Row 35—Start second K. stripe, M. 12, K. 1, M. 7, K. 3, M. 30.

Row 36—M. 29, P. 3, M. 7, P. 2, M. 12.

Row 37—M. 12, K. 3, M. 7, K. 3, M. 28.

Row 38—M. 27, P. 3, M. 7, P. 3, M. 13.

Row 39—M. 14, K. 3, M. 7, K. 3, M. 26.



Row 40—M. 25, P. 3, M. 7, P. 3, M. 15.

Continue working V stripes in this manner and follow chart for remaining decreases. Buttonholes are 4 sts. wide and 4 sts. from edge. To work buttonholes, see page 45. When there are 13 stripes, work all sts. in Moss St.

Work Left Front to correspond, omitting buttonholes.

Follow chart for Back, working in Moss St. for 7 rows (starting K. 1) and then working in pattern as follows:

Row 8—M. 59, P. 3, M. 59.

Row 9—M. 58, K. 5, M. 58.

Row 10—M. 57, P. 3, K. 1, P. 3, M. 57.

Row 11—M. 56, K. 3, M. 3, K. 3, M. 56.

Row 12—M. 55, P. 3, M. 5, P. 3, M. 55.

Row 13—M. 54, K. 3, M. 7, K. 3, M. 54.

Row 14—M. 53, P. 3, M. 9, P. 3, M. 53.

Row 15—M. 52, K. 3, M. 11, K. 3, M. 52.

Row 16—M. 51, P. 3, M. 13, P. 3, M. 51.

Row 17—M. 50, K. 3, M. 15, K. 3, M. 50.

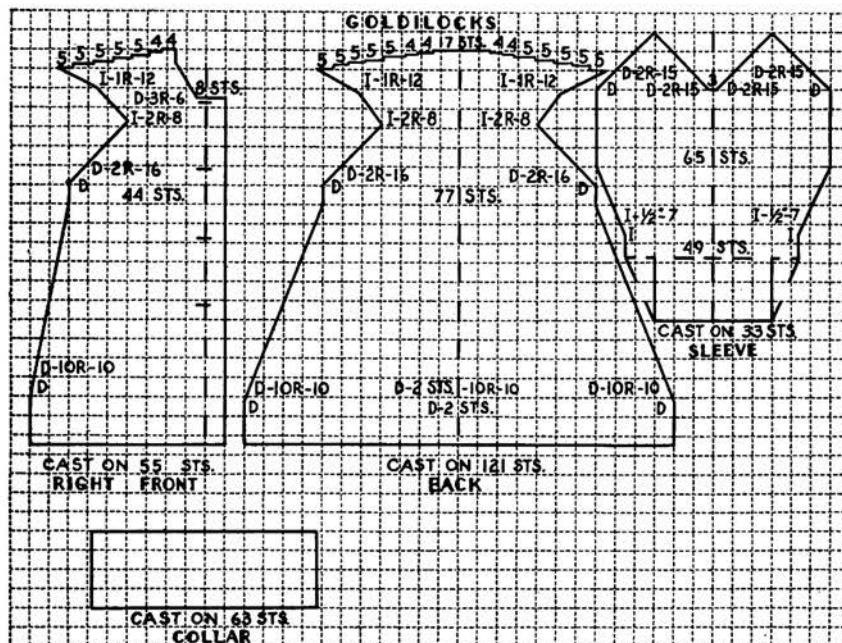
Row 18—M. 49, P. 3, M. 7, P. 3, M. 7, P. 3, M. 49 (start of second V stripe).

Row 19—M. 48, K. 3, M. 7, K. 5, M. 7, K. 3, M. 48.

Row 20—M. 47, P. 3, M. 7, P. 3, K. 1, P. 3, M. 47.

Row 21—M. 46, K. 3, M. 7, K. 3,

(Continued on next page)



GOLDILOCKS

(Instructions, continued from page 37)

M. 3, K. 3, M. 7, K. 3, M. 46.

Next row, decrease at the beginning and end of row and work 3 sts. tog. in center (first decrease).

Continue working V stripes in this manner and follow chart for decreasing in center and each side of back. Being careful to keep V stripes even, decrease in center and each side every 10th row, 10 times more.

When there are 13 completed knitted V's, work all sts. in Moss St. for yoke and continue to follow chart.

Follow chart for Sleeves, working in Moss St. for $3\frac{1}{4}$ inches. On next row, increase in every other st. to 49 sts., then work in pattern same as back. Increase at each side but do not decrease at center of V. When there are 9 stripes, finish points of sleeves according to chart.

Follow chart for Collar, working in Moss St. for 2 rows and then working V in same manner as back, omitting decreases at center.

Finishing, see page 45. Make 4 one inch pompons for buttons (see page 45).

HAT: (No chart shown.) Cast on 109 sts. and work in Moss St. When work measures 3 inches from start, decrease 1 st. Next row, * decrease 1 st., M. 14, decrease 1 st., slip a marker on needle (see page 45), repeat from * 5 times more. Continue to decrease before and after each of the 5 markers and at the beginning and end of every 5th row, until 12 sts. remain on needle. K. 2 tog. across row and draw remaining 6 sts. together.

For brim, cast on 109 sts. and work even in Moss St. for 3 inches.

Finishing, see page 45. Sew hat together and sew brim in place. To make 2 inch pompon, see page 45.

JACK HORNER

No. 112

4 PIECE GERMANTOWN OUTDOOR SET

(Illustrated on page 21)

Size 2

1 Pr. No. $3\frac{1}{2}$ M. M. Needles—14 inch

Scale: 6 sts. to 1 inch

8 rows to 1 inch

1 No. 2 Steel Crochet Hook

MINERVA GERMANTOWN ZEPHER

Sweater—White No. 100..... 5 Balls

Leggings—White No. 100..... 5 Balls

Cap—White No. 100..... 2 Balls

Mittens—White No. 100..... 1 Ball

Total 13 Balls

SWEATER: Follow chart for Front and Back, working in K. 2, P. 2, ribbing, for $2\frac{1}{2}$ inches. Continue in Stockinette St., working 2 sts. each side in Garter St. for border (indicated on chart by dotted lines). When work measures 7 inches from start, work 4 center sts. in Garter St. Work 1 st. more in Garter St. each side, according to chart. Start neck opening 1 inch above Garter St. according to chart. After binding off for front of neck, work 6 in Garter St. on each shoulder, then work 30 sts. at back of neck in Garter St. for 10 rows. Finish back according to chart.

Follow chart for Sleeves, working first $2\frac{1}{2}$ inches in ribbing. Increase 1 st. every 5th st. to 52 sts. Always work 2 sts. at each side in Garter St. If desired the sts. may be picked up around the armholes and made by reversing the sleeve chart.

Pick up 64 sts. around neck, K. 2 rows, work 2 rows in Stockinette St., K. 2 rows then bind off.

Work 1 row S. C. around neck opening, working 7 loops for buttons on right front edge. For underlap, work 5 rows S. C. on edge of left front.

LEGGINGS: Follow chart, working right and left leg separately. After working first $5\frac{1}{2}$ inches in K. 2, P. 2, ribbing, change to Stockinette St. and increase 1 st. in each of the first 7 sts., increase 1 st. in every other st. 15 times, increase 1 st. in each of the next 6 sts. (72 sts. on needle). Nine inches above ribbing join sts. of each leg (center front) and follow chart. Shape back of leggings as follows: K. 33, work back, K. 27, work back, K. 21, work back, K. 14, work back, K. 7, work back, then K. all sts. (132 sts.). P. 33, work back, P. 27, work back, P. 21, work back, P. 14, work back, P. 7, work back. Now work in K. 2, P. 2, ribbing, for 1 inch then work eyelets as follows: K. 2, * Y. O., K. 2 tog., K. 2, repeat from * across row, ending Y. O., K. 2 tog. Continue in ribbing for $\frac{1}{2}$ inch.

Work a Ch. $1\frac{1}{4}$ yds. long. Work 1 row S. C. on chain. Draw through eyelets of leggings.

Finishing, see page 45. Work 2 rows S. C. around bottom of each leg, then work under straps as follows: Ch. 6, work 5 S. C. on Ch. Continue in S. C. for $3\frac{1}{2}$ inches. Sew to bottom of leggings.

CAP: Follow chart, working first 10 rows in Garter St. then work in K. 2, P. 2, ribbing, for $1\frac{1}{2}$ inches. Work crown of cap as follows:

Row 1—K.

Row 2—P. 6, * K. 6, P. 12 repeat from * across row, ending P. 6.

Repeat these 2 rows for $3\frac{1}{2}$ inches, then decrease as follows: * K. 2 tog., K. 14, K. 2 tog., repeat from * across row. Continue decreasing in this manner every 4th row, 7 times more, having 2 sts. less between decreases and always working the 6 center sts. in each section in Garter St.

Finishing, see page 45. To work $1\frac{1}{2}$ inch pompon, see page 45.

For chin strap, work a Ch. 5 inches or desired length and work around Ch. in S. C. Work a loop at one end and fasten other end to cap.

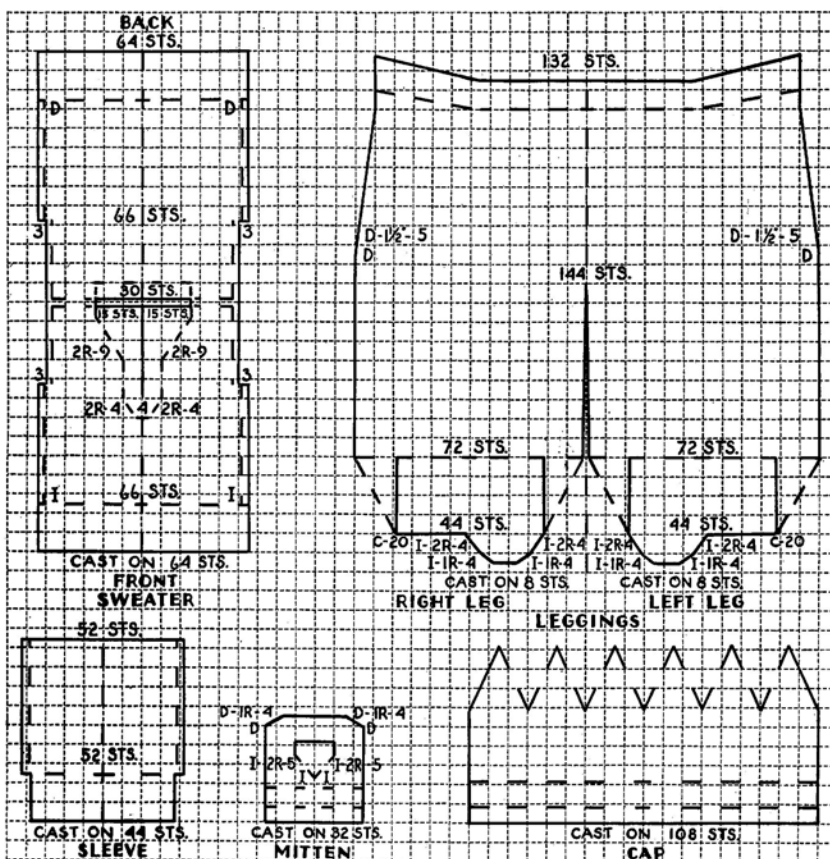
MITTENS: Follow chart, working first 12 rows in Garter St. and then working in K. 2, P. 2, ribbing, for 1 inch. The remainder of mitten is worked in Stockinette St. On 5th row from ribbing, start thumb as follows:

Row 1—K. 15, increase in next st., increase in next st., K. 15.

Row 2—P.

Continue to increase in the 16th st. from each edge according to chart (12 sts. for thumb). After last increase of thumb, work across 16 sts., then on thumb sts., work back and forth for $\frac{3}{4}$ inch, then K. 2 tog. across row. Bind off. On remaining sts. finish mitten, decreasing as indicated on chart, then on remaining 22 sts. K. 2 tog. across row. Draw remaining 11 sts. together.

CHART OF JACK HORNER



Bunny Rabbit

BUNNY RABBIT No. 116

CUDDLE YARN SLIP-OVER

(Illustrated on page 23)

Size 2

- 1 Pr. No. 2 Steel Needles—9 inch
- Scale: $8\frac{1}{2}$ sts. to 1 inch
- 11 rows to 1 inch
- 1 No. 5 Steel Crochet Hook
- 1 Embroidery Needle

MINERVA CUDDLE YARN

Pink 1 No. 286..... 3 Balls

SILK EMBROIDERY FLOSS

- White 1 Skein
- Yellow 1 Skein
- Green 1 Skein
- Total 3 Skeins

PATTERN No. 1: Multiple of 10 sts. plus 5.

Row 1—* K. 5, P. 1, K. 1, P. 1, K. 1, P. 1, repeat from * across row, ending K. 5.

Repeat this row for Pattern No. 1.

PATTERN No. 2: Multiple of 4 sts. plus 2.

Row 1—* K. 2, P. 2, repeat from * across row, ending K. 2.

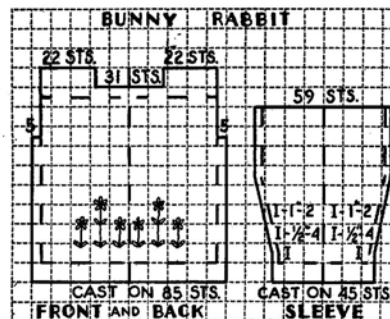
Row 2—Knit.

Repeat these 2 rows for Pattern No. 2.

Follow chart for Back and Front, working first inch in ribbing as follows: K. 3, P. 2, across row. Next row, K. 2, P. 3, then work in Pattern No. 1 for 10 rows. Change to

Stockinette St. always working first and last 5 sts. in Garter St. up to armhole. Work first 10 rows of yoke, indicated on chart by dotted line, in Pattern No. 1, then work remainder of yoke in Pattern No. 2.

Follow chart for Sleeves, working first inch in ribbing, then work in Pattern No. 1 for 10 rows. Change to



(Continued on next page)

BUNNY RABBIT

(Instructions, continued from
page 39)

to Stockinette St. and continue to follow chart, always working first and last 2 sts. in Garter St. All increases are made inside these border sts.

Finishing, see page 45. Sew shoulder seams for $1\frac{1}{4}$ inches from outer edge. Work 1 row S. C. around neck opening, working 2 loops for $\frac{1}{4}$ inch buttons on each shoulder. With embroidery silk, work flowers on front as indicated on chart. The white flowers and green leaves are worked in the Lazy Daisy St. The green stems are worked in the Ch. St. Work French Knot centers with yellow.

DAHLIA

No. 118

(Illustrated on page 32)

MELLOSHEEN BEDSPREAD

(85" x 108")

1 No. 6 Steel Crochet Hook

MINERVA MELLOSHEEN

Natural No. 1931..... 19 Skeins

The bedspread is 15 motifs wide and 19 motifs long (about 85" x 108"). The motifs measure about $5\frac{1}{2}$ inches in diameter before joining.

MOTIF: Ch. 6, join in a ring, Ch. 2.

Row 1—Work 10 H. D. C. in ring: Fasten with a slip st. in second Ch. of Ch. 2.

Row 2—Ch. 4, 1 D. C. in 1st. H. D. C., (Ch. 2, 1 D. C.) in each H.D.C. of previous row (11 D. C.), Ch. 2. Work 1 slip st. in next space.

Row 3—* Ch. 10, 1 S. C. in back loop of 2nd Ch. from hook, 1 D. C. in back loop of each Ch., fasten with S. C. in following space, repeat from * around row (11 petals in first row).

Row 4—After fastening last petal, work 1 S. C. in space under the first petal of previous row, repeat from * of Row 3, working 11 petals in same manner, fastening each under the previous row. When last petal is fastened, work 1 row of slip st. towards the point of first petal on bottom row.

Row 5—* Ch. 4, 1 S. C. in next petal, repeat from * around row, alternating petals from top and bottom row, Ch. 4, fasten to first petal.

Row 6—Ch. 3, * 4 D. C. in space, 1 D. C. in S. C. of previous row, repeat from * around row. Join with a slip st. in last Ch. of Ch. 3.

Row 7—Ch. 6, 1 D. C. in last Ch. of Ch. 3 of previous row, * Ch. 3, skip 3 D. C., 1 D. C. in next D. C., Ch. 3, 1 D. C. in same D. C. (1 pattern), repeat from * around row for 28 patterns. There will be 2 D. C. missing from previous row and it will be necessary on opposite side of this round to skip 2 D. C. instead of 3 D. C., Ch. 3, join in a ring with a slip st. Work 6 slip sts. to center of space between first 2 patterns.

Row 8—Ch. 5, 1 D. C. in same space, * Ch. 3, skip 1 pattern, 1 D. C. in next space, Ch. 3, 1 D. C. in same space, repeat from * around row, Ch. 3, fasten as before. Work 3 slip sts. to center of first pattern.

Row 9—Ch. 6, 1 S. C. in 4th Ch. from hook, Ch. 3, 1 S. C. in same Ch., Ch. 3, 1 S. C. in same Ch., Ch. 3, 1 S. C. in space between patterns, * Ch. 3, 1 D. C. in pattern, Ch. 4, 1 S. C. in D. C., Ch. 3, 1 S. C. in same D. C., Ch. 3, 1 S. C. in same D. C., Ch. 3, 1 S. C. in space between the next two patterns, repeat from * around row. Fasten in 3rd Ch. of Ch. 6.

Make 284 more motifs.

In joining the second motif with the first, fasten any three points of second with any three of first, when

working the last row. In joining the third, leave four points of first motif and join to the three following points. Continue in this manner throughout.

Filling in star—Ch. 5, join in a ring, * Ch. 9, slip st. in center of point of large motif, Ch. 9, 1 S. C. in ring of Ch. 5, Ch. 9, slip st. in next point, Ch. 9, 1 S. C. in ring, Ch. 13, slip st. in next point, Ch. 5, 1 S. C. in 8th Ch. of the Ch. 13, Ch. 5, slip st. in the point of next motif, Ch. 5, slip st. in last S. C., Ch. 9, 1 S. C. in ring, repeat from * until all the points are joined.

WILD ROSE

No. 119

(Illustrated on page 33)

MELLOSHEEN LUNCHEON SET

1 No. 9 Steel Crochet Hook

MINERVA MELLOSHEEN

Natural No. 1931..... 4 Skeins

The scarf is 3 patterns wide and 15 patterns long (about 16" x 40").

SCARF: Ch. 171 (3 patterns).

Row 1—1 D. C. in 8th Ch. from hook, * Ch. 2, skip 2 Ch., 1 D. C. in next Ch., repeat from * 4 times more (6 mesh from start), Ch. 5, skip 5, 1 S. C. in each of the next 5 Ch., Ch. 5, skip 5, 1 D. C. in next Ch., repeat from * for 4 mesh, 1 D. C. in each of the next 2 Ch., ** Ch. 2, skip 2, 1 D. C. in each of the next 3 Ch., repeat from ** 2 times more, work 4 mesh, Ch. 5, skip 5, 1 S. C. in each of the next 5 Ch., Ch. 5, skip 5, 1 D. C. in next Ch., repeat from * for 4 mesh, 1 D. C. in each of the next 2 Ch., repeat from ** to end of row, ending pattern with 6 mesh (to correspond with start of pattern), Ch. 5, turn.

Row 2—1 D. C. in second D. C., * Ch. 2, 1 D. C. in next D. C., repeat from * 3 times more (5 mesh in all), ** 1 D. C. in each of the next 6 Ch., Ch. 5, 1 S. C. in 3rd S. C., Ch. 5, skip 2 S. C. and 1 Ch.,

1 D. C. in each of the next 7 Ch., work 4 mesh, 2 D. C. in space, Ch. 2, 3 D. C. in next space, Ch. 2, 3 D. C. in next space, work 4 mesh, then repeat from ** 2 times more, ending with 5 mesh over last 5 mesh, Ch. 5, turn.

Row 3—* Work 4 mesh, 1 D. C. in each of 10 Ch. (1 D. C. in mesh, 7 D. C. over the 7 D. C., 2 D. C. in next mesh), Ch. 5, 11 D. C. (as before), 4 mesh, 2 D. C. in next space, Ch. 2, 3 D. C. in next space, repeat from * 2 times more, ending with 4 mesh, Ch. 5, turn.

Row 4—Work 2 mesh, * 6 D. C. in next 2 mesh, Ch. 2, skip 2 D. C., 7 D. C. over 7 D. C., Ch. 2, 7 D. C., in space of Ch. 5, Ch. 2, skip 2 D. C., 7 D. C. over 7 D. C., Ch. 2, skip 2 D. C., 7 D. C. over next 2 mesh, 2 mesh, Ch. 2, 3 D. C. in next mesh, 3 mesh, repeat from * 2 times more, ending with 2 mesh, Ch. 5, turn.

Row 5—Work 1 mesh, * 1 D. C. in next mesh, 7 D. C. over 7 D. C., 2 D. C. in next mesh, ** Ch. 7, skip 7 D. C., 2 D. C. in next mesh, 7 D. C. over 7 D. C., 2 D. C. in next mesh, repeat from ** once, work 5 mesh, then repeat from * 2 times more, ending with 1 mesh, Ch. 5, turn.

Row 6—Work 1 mesh, * Ch. 2, skip 1 D. C., ** 7 D. C. over next 7 D. C., Ch. 5, 1 S. C. in center of Ch. 7, Ch. 5, skip 2 D. C., repeat from ** once, 7 D. C. over next 7 D. C., 3 mesh, 2 D. C. in next mesh (center), 2 mesh, then repeat from * 2 times more, ending with 2 mesh, Ch. 5, turn.

Row 7—Work 3 mesh, * Ch. 5, 3 S. C. in next mesh, 3 S. C. in next mesh (3 at each side of the S. C. of previous row), Ch. 5, 1 D. C. in 4th D. C., repeat from *, work 2 mesh, Ch. 2, skip 1 mesh, 3 D. C. in next mesh, Ch. 2, 3 D. C. in next mesh, 3 mesh, then repeat from * 2 times more, ending with 3 mesh, Ch. 5, turn.

Row 8—Work 1 mesh, * Ch. 2,

skip 1 mesh, ** 7 D. C. over next 2 mesh, Ch. 5, 1 S. C. in center of the 6 S. C., Ch. 5, repeat from ** once, 7 D. C. over next 2 mesh, 2 mesh, Ch. 2, 3 D. C. in next mesh (center), 2 mesh, repeat from * 2 times more, ending with 2 mesh, Ch. 5, turn.

Row 9—Work 1 mesh, * 1 D. C. in next mesh, 7 D. C. over the 7 D. C., 2 D. C. in next mesh, Ch. 5, 2 D. C. in next mesh, 7 D. C. over the 7 D. C., 2 D. C. in next mesh, Ch. 5, 11 D. C. as before, 5 mesh, then repeat from * 2 times more, ending with 1 mesh, Ch. 5, turn.

Row 10—Work 1 mesh, * Ch. 2, skip 2 D. C., 7 D. C. over 7 D. C., Ch. 2, 7 D. C. over Ch. 5, repeat from *, Ch. 2, skip 2 D. C., 7 D. C. over 7 D. C., 2 mesh, Ch. 2, skip 1 mesh, 3 D. C. in next mesh, 2 mesh, then repeat from * 2 times more, ending with 2 mesh, Ch. 5, turn.

Row 11—* Work 3 mesh, Ch. 2, 11 D. C. (2 in mesh, 7 over 7 D. C., 2 in next mesh), Ch. 7, skip 7 D. C., 11 D. C. as before, 3 mesh, Ch. 2, skip 1 mesh, 3 D. C. in next mesh, Ch. 2, 3 D. C. in next mesh, repeat from * 2 times more, ending with 4 mesh, Ch. 5, turn.

Row 12—Work 4 mesh, * Ch. 2, skip 2 D. C., 7 D. C. over 7 D. C., Ch. 5, 1 S. C. in center of Ch. 7, Ch. 5, skip 2 D. C., 7 D. C. over 7 D. C., 3 mesh, Ch. 2, skip 1 mesh, 3 D. C., in next mesh, Ch. 2, 3 D. C. in next mesh, Ch. 2, 3 D. C. in next mesh, 3 mesh, repeat from * 2 times more, ending with 5 mesh, Ch. 5, turn.

Row 13—Work 6 mesh, * Ch. 5, 3 S. C. in each of the next 2 mesh as in Row 7, Ch. 5, 1 D. C. in 4th D. C., 3 mesh, ** Ch. 2, 3 D. C. in next mesh, repeat from ** 3 times more, 4 mesh, repeat from * 2 times more, ending with 6 mesh, Ch. 5, turn.

Repeat from Row 2, 14 times more, ending last pattern on Row 13 then work 1 row D. C. around all edges

(3 D. C. in every mesh) then 1 row S. C. with picot every 5th st.

The place mats are 2 patterns wide and 6 patterns long (about 10" x 16").

PLACE MATS: Ch. 114 (2 patterns) and work same as scarf having only 2 patterns instead of 3 and repeating from Row 2, 5 times more instead of 14 times more. Make 4.



PRIMROSE

No. 120

(Illustrated on page 34)

MELLOSHEEN BANQUET CLOTH

(72" x 110")

1 No. 9 Steel Crochet Hook

MINERVA MELLOSHEEN

White No. 1930..... 15 Skeins

The banquet cloth is 22 motifs wide and 34 motifs long (about 72" x 110"). The motifs measure about 3 inches in diameter before joining.

MOTIF: Ch. 5, join in a ring, Ch. 5.

Row 1—1 D. C. in ring, * Ch. 2, 1 D. C. in ring, repeat from * 5 times more (7 D. C. in all), Ch. 2, join with a slip st. in 2nd Ch. of Ch. 5 (8 spaces), slip st. in next space.

Row 2—Ch. 3, 2 D. C. in same space, * Ch. 2, 3 D. C. in next space, repeat from * around row, Ch. 2, join with a slip st. in 3rd Ch. of Ch. 3.

Row 3—Ch. 3, 1 D. C. in same D. C. 1 D. C. in next D. C., 2 D. C. in next D. C., * Ch. 3, 2 D. C. in next D. C., 1 D. C. in next D. C., 2 D. C. in last D. C., repeat from * around row, Ch. 3, join with a slip st. in last Ch. of Ch. 3.

(Continued on next page)

PRIMROSE BANQUET CLOTH

(Instructions, continued from
page 41)

Row 4—Ch. 3, * thread over, insert hook in next D. C., thread over, draw thread through, thread over, draw thread through first 2 loops (2 loops on hook), repeat from * in each of the 5 D. C. (6 loops on hook), thread over, draw thread through all the loops, Ch. 1, draw thread tightly, Ch. 6, 1 S. C. in space of Ch. 3, Ch. 6, repeat from * around row.

Join last Ch. 6 with slip st. in center of first pattern. Work 3 slip sts. to center of first loop.

Row 5—* Ch. 6, 1 S. C. in next space, repeat from * around row, Ch. 6, join with a slip st.

Row 6—* Ch. 4, 1 D. C. in next space, Ch. 3, 1 S. C. in D. C. (picot), 1 D. C. in same space, Ch. 4, 1 S. C. in next S. C., repeat from * around row, join last Ch. 4 in S. C.

Make 747 more motifs.

To join motifs, Ch. 5, join in a ring. Ch. 7, join to 1 point of first motif with a slip st., Ch. 5, 1 slip st. in 2nd Ch. of the Ch. 7, Ch. 1, 1 D. C. in ring, * Ch. 5, join to next point of same motif, Ch. 5, slip st. in the Ch. above the last D. C., Ch. 1, 1 D. C. in ring, repeat from * joining to 2 points in each of 3 more motifs.

DORCHESTER

No. 122

(Illustrated on page 35)

THREE PIECE CHAIR SET

1 No. 9 Steel Crochet Hook

MELLOSHEEN

Natural No. 1931..... 2 Skeins

BACK: Ch. 152 (9 patterns—measures about 18 inches).

Row 1—Work 3 Tr. C. to make half shell as follows: Thread over needle twice, insert hook in 6th Ch. from hook, draw thread through st., thread over, draw thread through 2 loops, thread over and draw

through next 2 loops leaving 2 loops on hook, * thread over needle twice, insert hook in same st., draw thread through st., thread over, through 2 loops, thread over, through 2 loops (3 loops on hook), repeat from *, then thread over, through 2 loops, thread over, through remaining 3 loops on hook, ** Ch. 4, skip 5 sts. on foundation Ch., work 3 completed Tr. C. in next Ch. (finish each st. by thread over and through last 2 loops on hook), Ch. 11 (long loop), 3 Tr. C. in next Ch. (this forms lower point of first diamond pattern), Ch. 4, skip 5 Ch., 1 S. C. in next Ch., Ch. 4, 2 Tr. C. in same Ch. as last S. C., leaving last 2 loops of first Tr. C. on hook, as in first half shell, now skip 2 Ch., work 3 Tr. C. (half shell) in next Ch., repeat from ** 7 more times, then work next pattern to first half shell, skip 4 Ch., work 1 Tr. C. in last Ch.

Row 2—Ch. 4, turn, skip the half shell, * work 1 Tr. C. in each of the 3 Tr. C. of previous row, Ch. 4, 1 S. C. in the 5th Ch. of long loop, Ch. 4, 1 Tr. C. in each of the next 3 Tr. C., Ch. 4, 1 S. C. in center of 2 half shells, Ch. 4, repeat from * across row, ending with Ch. 4, 1 S. C. in top of half shell at start of row.

Row 3—Ch. 4, turn, * 1 Tr. C. in each of the 3 Tr. C. of previous row, Ch. 4, 2 Tr. C. in the next S. C. (center of long loop, keeping 2 loops of first Tr. C. on hook and draw yarn through all loops on 2nd Tr. C.), Ch. 4, 1 S. C. in same st. as last 2 Tr. C. (half shell), Ch. 4, 2 Tr. C. in same st. (keeping 2 loops on hook to make second half shell), Ch. 4, 1 Tr. C. in each of the next 3 Tr. C., Ch. 4, 1 S. C. in next S. C., Ch. 4, repeat from * across row, ending with Ch. 4, 1 S. C. in last S. C. (top of half shell).

Row 4—Ch. 7, turn, * 1 Tr. C. in each of the next 3 Tr. C. of previous row (leaving 2 loops on hook as for half shell, draw yarn through

all loops on 3rd Tr. C. to draw to point, side of diamond pattern), Ch. 4, 1 S. C. in top of first half shell, Ch. 9 (long loop), 1 S. C. in second half shell, Ch. 4, 3 Tr. C. in 3 Tr. C., leaving 2 loops on hook and drawing yarn through all loops on 3rd Tr. C. to close point, repeat from * across row, ending with 3 Tr. C. closing point, 1 Tr. C. in next st.

Row 5—Ch. 7, turn, 3 Tr. C. in 1st st. (top of last group of Tr. C. of previous row), * Ch. 4, 1 S. C. in next S. C., Ch. 4, 1 Tr. C. in same st. leaving 2 loops on hook, 1 S. C. in center of long loop, drawing yarn through all loops on hook (this forms half shell), 1 Tr. C. in next S. C., Ch. 4, 1 S. C. in same st. as last Tr. C., Ch. 4, 3 Tr. C. in space between next 2 groups of Tr. C. (point), Ch. 11, 3 Tr. C. in same st. as last 3 Tr. C. (starting a new diamond), repeat from * across row, ending with 3 Tr. C. in last group, Ch. 4, 1 Tr. C. in next st.

Row 6—Ch. 4, turn, * 3 Tr. C. in 3 Tr. C. of previous row, Ch. 4, 1 S. C. in center of two half shells, Ch. 4, 3 Tr. C. in next 3 Tr. C., Ch. 4, 1 S. C. in 5th st. of Ch. 11 (long loop), Ch. 4, repeat from * across row, ending with Ch. 4, 1 S. C. in fourth Ch. of Ch. 7 of previous row.

Row 7—Ch. 7, turn, 3 Tr. C. (half shell) in 1st. S. C. (last st. of previous row), * Ch. 4, 3 Tr. C. in next 3 Tr. C., Ch. 5, 1 S. C. in S. C. in center of 2 half shells, Ch. 5, 3 Tr. C. in next 3 Tr. C., Ch. 4, 2 Tr. C. in next S. C., leaving last 2 loops of first Tr. C. on hook, Ch. 4, 1 S. C. in same st. as 2 Tr. C. (half shell), Ch. 4, 2 Tr. C. in same st. (2nd half shell), repeat from * across row, ending with Ch. 4, 3 Tr. C. (half shell) in S. C., Ch. 4, 1 Tr. C. in next st.

Row 8—Ch. 3, 1 Tr. C. in top of shell, Ch. 4, 1 S. C. in same st. * Ch. 4, 3 Tr. C. in next 3 Tr. C. as in Row 4 to draw to point, 3 Tr. C.

in next 3 Tr. C., (draw to point as before), Ch. 4, 1 S. C. in top of 1st half shell, Ch. 9, 1 S. C. in next half shell, repeat from * across row, ending with Ch. 4, 1 S. C. in top of half shell, Ch. 4, 1 Tr. C. in 3rd st. of Ch. at start of previous row.

Row 9—(First row of 2nd pattern.) Turn, 1 Tr. C. in last S. C. (top of shell), Ch. 4, 1 S. C. in same st. (half shell), * Ch. 4, 3 Tr. C. in space in center of point, Ch. 11, 3 Tr. C. in same space as last 3 Tr. C., Ch. 4, 1 S. C. in next S. C., Ch. 4, 1 Tr. C. in last S. C., 1 S. C. in center of Ch. 9 of previous row (half shell), 1 Tr. C. in next S. C., Ch. 4, 1 S. C. in same st. as Tr. C. (second half shell), repeat from * across row, ending with Ch. 4, 1 S. C. at top of Tr. C. at start of previous row to complete half shell.

Repeat pattern from Row 2.

Work 4 complete diamond patterns, break yarn, skip 2 diamonds at each side and work 1 more pattern across the 5 center diamonds.

Work 2 rows of S. C. around edge and finish with 1 row S. C. working a picot every 6th st.

Sew tassels as illustrated, winding thread 18 times around 2 inch cardboard. To make tassels, see page 45.

ARMPIECE: Ch. 72 (4 patterns—measures about 8 inches). Work same as back for 5 complete diamond patterns, break yarn, skip 1 diamond at each side and work 1 more complete pattern across 2 center diamonds.



THE REVERE No. 121

(Illustrated on page 26)

GERMANTOWN AFGHAN

(51" x 65")

1 No. 3 M. M. Crochet Hook
MINERVA GERMANTOWN
ZEPHYR

Pheasant No. 146.....	5 Balls
Rust No. 148.....	4 Balls
Henna No. 149.....	12 Balls
Tan No. 155.....	8 Balls
Brown 2 No. 158.....	20 Balls
Wood Brown No. 159.....	16 Balls
Total	65 Balls

HEXAGON: With color No. 146, Ch. 5, join in a ring with a slip st., * Ch. 13, work 1 D. C. in 4th Ch. from hook always working through back center loop of Ch., work 1 D. C. in each of the next 7 Ch., 1 S. C. in last 2 Ch., 1 S. C. in ring, repeat from * 5 times more (6 petals), break yarn, fasten.

Join color No. 148 in S. C. between petals, * 1 S. C. in each of the 10 sts. up side of first petal (always work through back loop of stitch throughout entire afghan), work 1 S. C. in each st. of the 3 Ch. at top of petal, then 10 S. C. at other side of petal, 1 S. C. in center ring, repeat from * around each petal, break yarn, fasten.

Join color No. 149 in S. C. between petals, * skip 1 st. on petal, work 1 S. C. in each of the next 7 sts., 1 D. C. in next st., 2 D. C. in each of the next 5 sts., 1 D. C. in next st., 1 S. C. in each of the next 7 sts., skip last st. of petal, 1 S. C. in S. C. between petals, repeat from * around each petal, break yarn, fasten.

Join color No. 155 between 4th and 5th st. of first petal, * 1 S. C. in each of the next 4 sts., 1 D. C. in next st., 2 D. C. in each of the next 8 sts., 1 D. C. in next st., 1 S. C. in each of the next 4 sts., draw yarn through next st. and then through 4th st. of next petal, Y. O. and through the 3 loops on

hook, repeat from * around each petal, break yarn, fasten.

Join color No. 158 at top center of first petal, * work 1 S. C. in each of the next 5 sts., skip 1 st., 1 D. C. in next st., skip 1 st., 1 Tr. C. in next st., skip 1 st., yarn over hook 3 times, draw yarn through next st., then draw yarn through 3rd st. of next petal (6 loops on hook), Y. O. and through 2 loops 3 times, Y. O. and through last 3 loops on hook, skip 1 st., 1 Tr. C. in next st., skip 1 st., 1 D. C. in next st., skip 1 st., 1 S. C. in each of the next 5 sts., repeat from * around, then with the same color work 1 row S. C. around hexagon, working 2 S. C. in st. at top center of petal. Finish with 1 row S. C. with color No. 159.

Make 69 more hexagons in same manner and with color No. 159 embroider centers as illustrated.

DIAMOND: With color No. 158, Ch. 2.

Row 1—Work 8 S. C. in first Ch.

Row 2—* 3 S. C. in first st., 1 S. C. in next st., repeat from * around row (4 corners with 1 S. C. between each corner).

Row 3—1 S. C. in first st., * 3 S. C. in next st. (corner), 1 S. C. in each of 3 sts., repeat from * around row.

Row 4—1 S. C. in first st., * 3 S. C. in next st. (corner), 1 S. C. in each of 5 sts., repeat from * around row.

Row 5—1 S. C. in first st., * 3 S. C. in next st. (corner), 1 S. C. in each of 7 sts., Ch. 1, 3 D. C. in next st. (corner), Ch. 1, 1 S. C. in each of 7 sts., repeat from * once.

Continue to work in this manner, working corners as in Row 5, until diamond measures 7 inches in length and 4½ inches in width. With color No. 159, work 1 row S. C. around diamond.

Make 53 more diamonds in same manner.

(Continued on next page)

REVERE AFGHAN

(Instructions, continued from
page 43)

TRIANGLE: With color No. 158,
Ch. 6, join in a ring.

Row 1—* 3 S. C. in 1st st., 1 S. C.
in next st., repeat from * 2 times
more (12 sts.).

Row 2—1 S. C. in first st., * 3 S.
C. in next st., 1 S. C. in each of the
next 3 sts., repeat from * 2 times
more.

Row 3—1 S. C. in first st., * 3 S. C.
in next st., 1 S. C. in each of the
next 5 sts., repeat from * 2 times
more.

Row 4—1 S. C. in first st., 3 S. C.
in next st., 1 S. C. in each of the
next 7 sts., 3 D. C. in next st., 7
S. C., 3 S. C. in next st., 7 S. C.

Row 5—1 S. C., 3 S. C. in next
st., 9 S. C., 3 D. C. in next st., 9
S. C., 3 S. C. in next st., 9 S. C.

Row 6—1 S. C., 3 S. C. in next st.,
11 S. C., Ch. 1, 3 D. C. in next st.,
Ch. 1, 11 S. C., 3 S. C. in next
st., 11 S. C.

Row 7—1 S. C., * 3 S. C. in next
st., 14 S. C., repeat from * 2 times
more, draw color No. 159 through
last 2 loops and work 1 more row
in same manner, break yarn, fasten.
Make 11 more triangles in same
manner.

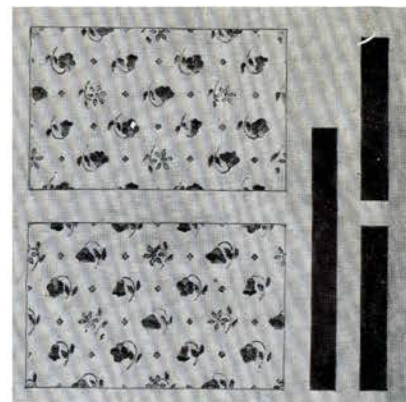
With color No. 159, sew pieces of
afghan together on wrong side of
work, work 1 row S. C. around en-
tire afghan, then crochet fringe as
follows:

Working with wrong side of
afghan toward you, * work 1 S. C.,
drawing up a 4 inch loop, leave
loop on hook, 1 S. C. in same st.,
draw up a 4 inch loop (hold loops
taut with third finger of right
hand), leave loops on hook, repeat
from * until you have 5 or 6 loops
on hook, then drop all loops but
last one from hook, and continue
in same manner around afghan.
Cut loops.



**Little Acorns—Minerva Colonial
Design No. 69**

The simple Oak Leaf and Acorn
motifs and the lovely soft shades of
Green, Gold and Brown, used to work
this footstool, give it much dignity and
charm. Initials may be worked in the
center if desired. It may also be used
as a pillow top. The design size is 15½"
x 11", the canvas size 18½" x 14",
and it is made on Mt. Vernon Canvas



**Belles Fleurs—Minerva Louis XVI
Design No. 4**

The tiny flower sprays are worked
in shades of Blue, Rose and Gold, and
are jewel-like in contrast with the dull
Black background. Use a slide fastener
closing and Black silk lining. The de-
sign size is 10" x 6¼". It is made on
Plymouth Canvas.



Belles Fleurs Bag

General Instructions

SYMBOLS USED ON CHARTS

- I—means to Increase 1 st. at point indicated.
I-1R-8—means to Increase 1 st. every row, 8 times.
I-2R-8—means to Increase 1 st. every 2nd row, 8 times.
I- $\frac{1}{2}$ "-8—means to Increase 1 st. every $\frac{1}{2}$ inch, 8 times.
D—means to Decrease.
B—means to Bind off.
C—means to Cast on.
C-4 Sts.-2R-10—means to Cast on 4 sts. every 2nd row, 10 times.
B-4 sts.-2R-10—means to Bind off 4 sts. every 2nd row, 10 times.

ABBREVIATIONS USED IN KNITTING AND CROCHET INSTRUCTIONS

- K.—Knit
P.—Purl
Ch.—Chain
S. C.—Single Crochet
D. C.—Double Crochet
Tr. C.—Treble Crochet
Tog.—Together
Sl. St.—Slip Stitch
M. M.—Millimeter
St.—Stitch
Y. O.—Yarn Over
P.S.S.O.—Pass Slip Stitch Over Knit Stitch.

BUTTONHOLES: Are indicated on chart by a dash—representing width of buttonhole. Bind off the given number of stitches, this same number of stitches to be cast on, on the next row directly over the bound off sts. Finish buttonholes by overcasting.

To make crocheted buttonholes—Ch. the desired number of sts., skip the same number of sts. on previous row and on next row, work over the Ch. sts.

KNIT-IN POCKETS: Work pocket facing (back of pocket) as indicated on chart, ending with a K. row and put sts. on a st. holder. Work pocket opening as indicated on chart, binding off pocket sts. on a K. row. On next row, work across to pocket opening, work pocket sts. from st. holder and continue across row. After garment is completed, sew edges of facing to garment.

Knit-in pockets in a raglan started at the neck: Work to pocket opening, slip pocket sts. on a st. holder, cast on the same number of sts. and continue to follow chart. When garment is completed, pick up sts. from st. holder and work the required number of inches.

MARKERS: When the instructions say to slip a marker on needle, use a small safety pin, or a tied loop of yarn in contrasting shade, slip on right hand knitting needle, and on next row, slip from one needle to the other and continue work.

TO MITER V NECK: After picking up necessary

number of sts. around neck opening, decrease at point of V by K. 2 tog., 2 times every row.

PLEATS: Bind off as indicated on chart and on next row, work across row, joining the sts. each side of those bound off (do not cast on sts. over the bound off sts.). Sew pleats in place after garment is completed.

CROCHETED BELT: Make a chain 29 inches or the desired length, then work around chain in S. C. increasing at corners. Continue in this manner until belt measures $1\frac{1}{2}$ inches or desired width. Face with matching grosgrain ribbon.

KNOTS: When very little loss of yarn is involved, place knot at end of row. If loss of yarn is too great, do not make knot but have a four inch (4") end. Work next stitch from the new ball also leaving a four inch end. After 4 or 5 rows have been worked over this joining, tie these ends firmly.

MONK'S CORD: Cut yarn of sufficient length and number of strands required, divide into two groups and fasten together at one end. Make a slip loop on forefinger of left hand with one strand near point of joining, holding slip knot between thumb and second finger, * insert forefinger of right hand through loop from back or left side and draw up a loop of other strand. Keeping this loop on right forefinger, change slip knot to right hand, dropping loop off left forefinger, and draw first strand taut, closing first loop. Repeat from * inserting left forefinger in back of loop and continue to alternate in this manner.

WHEN KNITTING 2 PARTS OF A GARMENT that correspond, it is advisable to work them at the same time on the same needle, using 2 balls of yarn.

CAUTION—NEEDLES: Always clean your needles before working. This prevents a dark line in your work.

POMPONS: Wind yarn around cardboard the size of pompon desired. Slip from cardboard, tie securely in center and clip both ends, then trim in shape of ball.

TASSELS: Wind yarn around cardboard the size of tassel desired. Tie firmly at one end, slip from card and wind yarn several times around the loops near the top. Trim the ends evenly.

FINISHING A NEW GARMENT

BLOCKING: Pin each piece, wrong side out, on a pressing board in exactly the line you wish to retain. Use a damp cloth and moderately hot iron, press lightly, allowing the steam to go through the garment. Lay it on a flat surface until thoroughly dry. The skirt may be blocked in the same manner or on a Minerva Skirt Blocker which has been adjusted to the proper measurements.

JOINING: Sew pieces together, being careful that the edges meet evenly. Be careful to match rows wherever possible, easing in any extra fullness. In sewing in the sleeves be sure to ease the fullness

toward the top. When sewing seams in a skirt, place on a flat surface and pin edges evenly, then sew tightly to prevent sagging. Another method of sewing the garment together is to pin edges, easing in any extra fullness, then sew a narrow dressmaker's seam, using a back st. Press seams lightly.

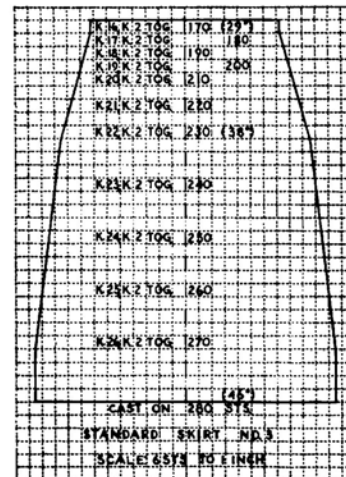
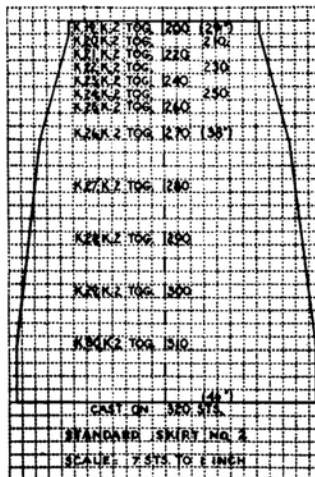
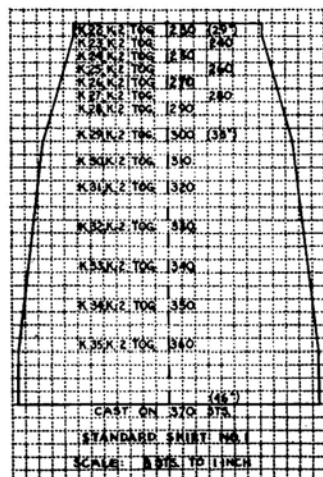
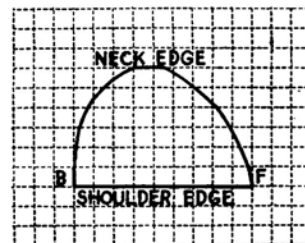
TAPING: To insure the shoulders retaining their fit, it is advisable where possible, to tape the shoulder seams. This prevents sagging.

BEADING: Fasten yarn, Ch. 5, * skip 2 sts., 1 D. C. in next st., Ch. 2, repeat from * around edge of garment, fasten yarn in 3rd Ch. of the Ch. 5.

CASING FOR ELASTIC (inside at waistline): Fasten yarn, * Ch. 5, skip 2 sts., 1 slip st. in st. 1/2 inch below next st., Ch. 5, skip 2 sts., 1 slip st. in next st. 1/2 inch above, repeat from *.

EDGES: The bottom of skirt and edges of blouse, sleeves, collar and pocket openings are generally finished with several rows of S. C., when no other border is used. When crocheting around bottom of skirt, work first row, skipping every 6th st. Work all other rows in every stitch. With slashed skirt, continue crocheting along edges of slash and face with matching gros-grain ribbon. Sew underlap in place.

SHOULDER PADS: Cut a pattern actual size following small chart. Cut 2 pieces from light weight material and sew together with 1/2 inch seams and 1 layer of padding between. Sew in shoulders as indicated by letters on chart, B—back, F—front.



QUANTITY COMPARISON

MINERVA YARNS	MINERVA NOVELTY YARNS			
	Franco Fleck 1 Tube to	Lucon Loop 1 Tube to	Newport Nub 1 Tube to	Shen Silk 1 Tube to
Featherdown	2 Balls	1 Ball	3 Balls	1 1/2 Balls
Lustre Wool	2 1/2 Balls	1 Ball	2 1/2 Balls
Mirvena	1 Ball	3 Balls
Modeen	3 1/2 Balls	2 Balls
Olympic	2 Balls	5 Balls	2 1/2 Balls
Scotch Sports Yarn	1 1/2 Skeins	3 Skeins	1 Skein
Shetland Floss	3 1/2 Balls	2 Balls	5 Balls	2 Balls
Velveen	1 1/2 Balls	1 Ball

This comparison is based on the tension used by the average knitter. Therefore, these are approximate quantities and may vary slightly in accordance with the way you knit.

An easy estimate of the number of tubes you will require, for use with the above or any other Minerva Yarn, can be made by comparing the yardage of the two yarns you plan to use. Due

to the elasticity of the regular Minerva Yarns, you will require slightly more yardage of them than of the Novelty Yarn with which they are to be combined.

Interchangeable Yarns

INTERCHANGEABLE—GROUP No. 1

Cuddle Yarn (2 fold— $\frac{3}{4}$ oz. ball)—About 183 yds. to ball.
Featherdown (3 fold—1 oz. ball)—About 256 yds. to ball.
Lustre Crepe (2 fold—1 oz. ball) Novelty yarn—About 170 yds. to ball.
Lustre Flake (1 oz. ball) Novelty yarn—About 123 yds. to ball.
Velveen (2 fold—2 oz. ball) Novelty yarn—About 300 yds. to ball.
Vicuna (2 fold— $\frac{1}{2}$ oz. ball)—About 105 yds. to ball.
Woolgora (2 fold— $\frac{1}{2}$ oz. ball)—About 131 yds. to ball.

INTERCHANGEABLE—GROUP No. 2

Arctic Modeen (4 fold—1 oz. ball)—About 148 yds. to ball.
Heather Flake (4 fold—1 oz. ball) Novelty yarn—About 147 yds. to ball.
Lustre Wool (2 fold— $\frac{15}{8}$ oz. ball)—About 227 yds. to ball.
Mirvena (2 fold—2 oz. ball) Novelty yarn—About 250 yds. to ball.
Modeen (4 fold—1 oz. ball)—About 148 yds. to ball.
Olympic Yarn (3 fold—1 oz. ball)—About 140 yds. to ball.
Pompadour (2 fold—1 oz. ball)—About 128 yds. to ball.
Shetland Floss (2 fold—1 oz. ball)—About 157 yds. to ball.
Spanish Worsted (4 fold— $\frac{13}{4}$ oz. ball)—About 229 yds. to ball.

INTERCHANGEABLE—GROUP No. 3

Germantown Zephyr (4 fold—1 oz. ball)—About 105 yds. to ball.
Knitting Worsted (4 fold— $\frac{13}{4}$ oz. ball)—About 152 yds. to ball.
Silver Mixes (4 fold— $\frac{15}{8}$ oz. ball)—About 127 yds. to ball.

INTERCHANGEABLE—GROUP No. 4

Chalimar—About 800 yds. to skein.
Mellosheen—About 700 yds. to skein.

NON-INTERCHANGEABLE YARNS

Boucle (1 oz. ball) Novelty Rayon—About 85 yds. to ball.
Franco Fleck (1 oz. tube)—About 525 yds. to tube.
Homecraft Rug Yarn (4 fold—1 oz. spool)—About 25 yds. to spool.
Homespun Nub Yarn (2 fold—2 oz. ball) Novelty yarn—About 160 yds. to ball.
Lucon Loop (1 oz. tube)—About 272 yds. to tube.
Needlepoint Yarn (4 fold— $\frac{1}{2}$ oz. skein)—About 34 yds. to skein.
Newport Nub (1 oz. tube)—About 735 yds. to tube.
Saxony (2 fold— $\frac{3}{4}$ oz. ball)—About 250 yds. to ball.
Saxony (3 fold— $\frac{3}{4}$ oz. ball)—About 165 yds. to ball.
Saxony (4 fold— $\frac{3}{4}$ oz. ball)—About 125 yds. to ball.
Scotch Sports Yarn (3 fold—4 oz. skein)—About 280 yds. to skein.
Shen Silk (1 oz. tube)—About 302 yds. to tube.
Tapestry Yarn (4 fold—1 oz. skein)—About 88 yds. to skein.

NEEDLE GAUGE COMPARISONS

MINERVA MILLIMETER SIZES ARE LISTED BELOW, SHOWING THE CLOSEST AVAILABLE SIZES IN OTHER GAUGES

Minerva M. M.		2 $\frac{1}{2}$		3	3 $\frac{1}{2}$	4	4 $\frac{1}{2}$		5	5 $\frac{1}{2}$	6	7	8	9
American Standard	0	1	2	3	4	5	6	7	8	9	10	11	12	13
Circular and Straight Steel	0	1	2	3	4	5	6	7	8					
Double Point Steel	13	12	11	10	9	8								



Use MINERVA M. M. Ivory Knitting Needles and Crochet Hooks and Standard sizes of Steel Needles and Crochet Hooks for all Minerva Instructions

JAMES LEES & SONS COMPANY, Bridgeport, Penna.

NEW YORK OFFICE
230 Fifth Avenue

CHICAGO OFFICE
37 S. Wabash Ave.

SAN FRANCISCO OFFICE
334 Sutter Street



[Vintage Patterns Dazespast](#) (re-mastered eBooks)

[Dazespast](#)

Original Vintage Knitting Crochet, Sewing & Needle Art Patterns and Books
eBay Store: mooreruby817

Free Vintage Patterns for Everyone
[Livin a Vintage Lifestyle and Lovin It](#) (Facebook)

[Follow Us on Pinterest](#) or the [Vintage Patterns Blog](#)

Email: ruby@dazespast
315.317.0781 Fax same